



# **Rhode Island Department of Human Services (DHS)**

## **2021 Child Care Market Rate Survey Report**

**July 2021**

# Table of Contents

<b>ACKNOWLEDGEMENTS .....</b>	<b>3</b>
<b>EXECUTIVE SUMMARY .....</b>	<b>4</b>
Overview .....	4
Key Findings.....	4
<b>INTRODUCTION .....</b>	<b>6</b>
Methodology.....	6
Drafting the Surveys.....	6
Data Collection .....	8
Data Cleanup and Analysis.....	8
<b>MARKET RATE SURVEY FINDINGS.....</b>	<b>10</b>
Response Rates.....	10
Rates and the 75 <sup>th</sup> Percentile.....	14
Center-based .....	15
Family Child Care .....	18
Non-traditional Hours.....	20
Additional Questions.....	20
COVID-19 Rate Adjustments.....	20
Additional Fees, Discounts, and Services .....	21
Support Services .....	23
Rate Setting.....	24
Program Operation.....	25
Populations Served .....	25
Operating Hours .....	26
Child Care Assistance Program (CCAP) .....	28
Program Quality.....	30
<b>NARROW COST ANALYSIS (COST OF CARE) .....</b>	<b>33</b>
Response Rate.....	33
Center-based Provider Findings.....	36
Wages and Compensation.....	36
Education.....	38
Response to Increased Minimum Wage .....	38
Revenue and Expenses .....	39
Group/Family Child Care Home Findings .....	41
Wages and Compensation.....	41
Education.....	42
Response to Increased Minimum Wage .....	42
Revenue and Expenses .....	42
<b>APPENDIX A. SURVEY INSTRUMENT .....</b>	<b>45</b>
<b>APPENDIX B. DATA ANALYSIS .....</b>	<b>66</b>
Market Rate Survey .....	66
Rates at the 75 <sup>th</sup> Percentile .....	67

Center Based.....	67
Family Child Care .....	73
Additional Analysis.....	78
CCAP .....	78
Program Quality.....	81
Cost of Care.....	82

## Acknowledgements

Public Consulting Group LLC (PCG) would like to thank the many providers and individuals that contributed to this year's Market Rate Survey and final report. In particular, we greatly appreciate the time and effort of the providers who completed the survey, the Rhode Island Department of Human Services (DHS) staff, DHS' community partners, and the following members of the 2021 Child Care Market Rate Advisory Group:

- Alexandra Flores, Family Child Care Provider
- Amy Henderson, DHS Staff
- Amy Vogel, Child Care Center Provider
- Andrea Engle, Child Care Center Provider
- Bailey Kent, Child Care Center Provider
- Beth Lobdell, Child Care Center Provider
- Blythe Berger, RI Department of Health (RIDOH)
- Brenda Potter, Center for Early Learning Professionals (CELP)
- Catherine Green, DHS Staff
- Donna Chartier, Group Family Child Care Provider
- Dulari Tahbilda, SEIU Education and Support Fund (ESF)
- Emma Villa, Family Child Care Provider
- Erin Cox, Local Initiatives Support Corporation (LISC)
- Heather Grocott, Child Care Center Provider
- Jackie Toracinta, Group Family Child Care Provider
- Joseph Agresti, RI Department of Labor and Training (DLT)
- Kayla Rosen, Director of Early Childhood Strategy—Office of the Governor
- Khadija Lewis Khan, Child Care Center Provider
- Kim Maine, Child Care Center Provider
- Linda Laliberte, Child Care Center Provider, Head Start
- Lisa Hildebrand, RIAEYC, BrightStars
- Lisa Nugent, RI Department of Education (RIDE)
- Lori Wagner, Child Care Center Provider
- Maria Fajardo, 1199 SEIU
- Megan Ressler, Local Initiatives Support Corporation (LISC)
- Rachel Flum, Economic Progress RI
- Sarah Nardolillo, DHS Staff
- Sharon Fitzgerald, DHS Staff
- Stacy Del Vicario, Child Care Center Provider, State Funded Pre-K

## Executive Summary

### Overview

The Rhode Island Department of Human Services (DHS) is federally mandated by the Child Care and Development Block Grant (CCDBG) Act to conduct a valid and reliable child care market rate survey (MRS) or alternative methodology for gathering data on child care rates every three years. The purpose of the mandated survey is to gather information to allow states to set their child care assistance program's subsidy reimbursement rates at a level that is sufficient to ensure equal access to child care services for children eligible for subsidy that is comparable to services available to children not eligible for subsidy.<sup>1</sup> Federal guidance establishes the 75<sup>th</sup> percentile (of market rates) as the benchmark for providing equal access. Results are submitted as part of the State's Child Care and Development Fund (CCDF) state plan.

Additionally, states are required to consider the cost of providing child care when conducting the MRS and setting subsidy rates. Guidance from the Administration for Children and Families (ACF) indicates that states may conduct a narrow cost analysis that measures whether base subsidy payment rates adequately cover the cost of higher quality child care services.

This report contains findings from the MRS as well as the Cost of Care, also referred to as the Narrow Cost Analysis, which were conducted by DHS and PCG in Spring 2021.

### Key Findings

- More than half of licensed child care providers (54 percent, 437 of 809) completed the MRS. At the 95<sup>th</sup> percent confidence interval, this results in a low margin of error, 3.18 percent.
- Child Care Center providers were more likely to respond to the MRS than Family/Group Family Child Care Home (FCC) providers (66 percent vs. 42 percent).
- For Center providers, the 2021 75<sup>th</sup> percentile of weekly private pay tuition rate increased from 2018 across all age groups. For Infants, Toddlers, and Preschool age children, the increase ranged from 8.7 percent to 9.7 percent. For school-age children, the increase ranged from 11 to 25 percent, depending on the care schedule.
- FCC programs saw a larger increase in the 2021 75<sup>th</sup> percentile of weekly private pay tuition rates compared to 2018. For Infants, Toddlers, and Preschool age children, the average increase was about 25 percent. For School-age children, the increase ranged from 11 percent to nearly 95 percent, depending on the care schedule.
- While the most common overall response of information used for private pay rate setting was 'Rates of Nearby Child Care programs' (232 total), this varied by provider type. Center-based providers most frequently reported utilizing 'Overall Operating Costs' when setting private pay rates (182-Centers), while FCC providers most frequently reported using 'CCAP Reimbursement Rates' when setting private pay rates (111- FCC).
- Providers were asked about a variety of subcategories of families served including: children with disabilities, children experiencing homelessness, children who speak English as a second language, and children participating in foster care. Of these subcategories, children who speak English as a second language was the largest subcategory served with 63 percent of programs reporting this population in attendance. Programs reporting more than 51 percent of their families served speak English as a second language were most commonly FCC providers, located in the Urban Core, and more likely to participate in Child Care Assistance Program (CCAP).
- Non-traditional hours of care, including weekend, overnight, or evening care, were not commonly reported, with approximately 12 percent of programs providing this type of care. These programs were predominately FCCs. On average, Center-based programs operate 9 hours and 31 minutes per day, while FCCs operate 11 hours and 22 minutes per day.
- The majority of survey respondents (88 percent) indicate they participate in BrightStars, Rhode Island's Quality Rating and Improvement System (QRIS). Ninety-seven percent of providers participate in BrightStars and CCAP. Two-thirds (66 percent) of respondents noted tiered reimbursement is an incentive to participate in BrightStars.
- Of the 437 providers who responded to the MRS, almost 40 percent went on to complete the optional Cost of Care. This represents 20 percent of the total licensed child care provider population. Again, Center providers were more likely to respond than FCC providers, comprising 63 percent of

the sample. Given the small sample size, the margin of error at the 95<sup>th</sup> percent confidence interval is 6.8 percent.

- When asked to identify sources of revenue, FCCs report 'CCAP Reimbursement' as the most common source of revenue, while Center-based programs report 'Private Pay Tuition'.
- The most commonly reported education level attainment for both FCC providers and center-based program staff is "High School or Equivalent" (FCC: 34 percent, Centers: 28 percent).
- Providers were asked if and what programmatic adjustments may be necessary if the state or federal minimum wage were to be increased to \$15/hour. In May 2021, after the survey was administered, legislation was signed in Rhode Island to increase the minimum wage from \$11/hour to \$15/hour by 2025. Seventy-eight percent of providers indicated they would need to make a programmatic change if the minimum wage increased. Of the programmatic changes, Centers and FCC programs most commonly cited 'Increase private pay tuition rates or fees'.

## Introduction

In 2021, Public Consulting Group LLC (PCG) was contracted by the Rhode Island Department of Human Services (DHS), to conduct a federally mandated Market Rate Survey (MRS) of child care providers throughout the state. The survey was administered between March and April 2021 by PCG. This report details the findings of the 2021 Market Rate Survey.

The United States Department of Health and Human Services (HHS), Administration for Children and Families (ACF) currently administers the Child Care and Development Fund (CCDF), which distributes child care subsidy dollars to states through a block grant (the Child Care and Development Block Grant, or CCDBG). Under the 2014 reauthorization of the CCDF by Congress, states are required to conduct a MRS or alternative methodology every three years to assist in establishing subsidy payment rates. This survey is intended to provide enough information to guide states in setting subsidy rates at a level where children and families receiving assistance have equal access to child care services that are of comparable quality to children who do not receive assistance. Federal guidance has set the 75<sup>th</sup> percentile of market rates to be the appropriate indicator of equal access. Due to the COVID-19 pandemic, ACF offered the states the opportunity to pursue a waiver for the MRS in the 2021-2023 CCDF State Plan. Rhode Island chose not to pursue this waiver due to the importance of leveraging the data within this report to inform future policy and program design changes.

The 2014 reauthorization of CCDF also required states to consider the cost of providing care in their states when setting subsidy rates. This cost of care analysis must consider both the cost of “child care providers’ implementation of health safety, quality, and staffing requirements,” and “the cost of higher-quality care.”<sup>1</sup> To address this requirement for what is called a “narrow cost analysis,” DHS and PCG included an optional cost of care form to be completed by licensed providers at the end of the main MRS. This optional cost of care form was considered entirely separate from the main MRS and was not intended to be a representative sample of child care providers. Its findings will be used to inform the state during its rate setting process.

## Methodology

DHS and PCG chose to conduct a census survey for licensed providers, with a target of approximately one-third of all child care providers in the state completing the survey to be considered statistically valid (at a 95% confidence interval, or a margin of error of +/- 5%). Together, DHS and PCG drafted a survey instrument to capture information on rates, enrollment, general demographics, subsidy participation, other fees, and participation in quality initiatives.

As a separate vehicle for collecting data to meet the requirements of the narrow cost analysis, a cost of care form was developed and associated with the main, licensed provider survey for providers to take separately and provide additional cost information to the state on the provision of child care. This form collected information on salaries and wages, education level, program expenses, and sources of revenue.

These surveys were drafted by DHS and PCG and presented to the Market Rate Survey Advisory Group, which was composed of child care providers, early childhood advocates, and other key stakeholders from RI’s early childhood community convened to advise the state and PCG in the creation of the survey, its implementation, and promoting participation among the provider community. After receiving final approval, the surveys were built into an online survey collection tool, Alchemer, which served as the primary portal for gathering completed surveys.

## Drafting the Surveys

To build the 2021 MRS, PCG analyzed Rhode Island’s previous survey from 2018, in addition to a number of other peer state surveys, including, but not limited to Massachusetts, Connecticut, Washington, Missouri, and other states. Using the details learned from these other states and building on the expertise of PCG’s previous experience in designing market rate surveys for other states, in addition to lessons learned from deploying the

---

<sup>1</sup> 2018. U.S. Department of Health and Human Services, Administration for Children and families, Office of Child Care. CCDF-ACF-PI-2018-01. Retrieved from <https://www.acf.hhs.gov/occ/resource/ccdf-acf-pi-2018-01>

2020 COVID-19 Impact Survey series (October- December 2020), PCG worked with DHS to design a new survey for 2021.

This survey, in particular, was built with the COVID-19 public health emergency in mind, meaning the market operates differently today than it did previously to meet the needs of parents and children in Rhode Island, and we worked to capture those nuances in the survey and our subsequent data analysis. Given the public health crisis, it was determined the survey would be offered 100 percent online, using the same survey platform PCG utilized during the 2020 COVID-19 Impact Survey series in Fall 2020, another fully online survey with resulting high response rates. To support providers who may not have access to an online tool, PCG assembled a call team of English and Spanish speakers to conduct the survey over the phone with providers, as well as provide technical assistance.

After drafting the survey, we worked with an Advisory Group made up of active providers and provider advocacy groups to help shape the survey further to make it more accessible and meaningful for the providers taking it. After receiving feedback, we worked with DHS and the Advisory Group to further identify the various strata of the survey that we would target and take into consideration in our analysis:

- **Provider Type:** Center-based providers and family child care (FCC) providers
- **Location:** Inside or outside urban core<sup>2</sup>
- **Language:** English, Spanish, or Creole
- **County:** Bristol, Kent, Newport, Providence, Washington
- **Child Care Assistance Program (CCAP) Participation,** Rhode Island's child care subsidy program
- **Underrepresented Communities:** Woonsocket, Burrillville, Scituate, Hopkinton, Richmond, Narragansett, Newport, Tiverton, Little Compton<sup>3</sup>
- **Head Start Participation**
- **State PreK Participation**
- **BrightStars Participation**
- **BrightStars Quality Rating:** 1-5

After defining these various groups, we reviewed the draft MRS to determine the specific questions that would be required to complete the survey, which generally focused on collecting rates to determine the 75<sup>th</sup> percentile of market rates.

The cost of care form, which informed our narrow cost analysis, was left optional for providers, as it was not required to achieve statistical significance. It was decided that within the survey itself, all questions (with the exception of a question requiring logic) were also optional to encourage providers in disclosing data they have not previously been asked to disclose. The link to the Cost of Care survey appeared on the completion screen of the MRS.

Federal requirements related to the Narrow Cost Analysis allow for multiple forms of data collection, which include qualitative research, data collection via survey, or blended forms of the data collection. Where states choose to conduct data collection through surveys, the response rate was not required to be statistically significant. DHS chose to design an abbreviated, optional survey to collect cost components from providers. While providers were familiar with the need and purpose for completing the MRS, messaging related to completing the optional cost of care form included:

1. This is another method for DHS to understand what the actual cost of providing care is for child care providers and see how/if the subsidy reimbursement rates could truly cover what it costs to provide care.
2. This is another method for DHS to collect data which may be used to advocate for in-state support for child care providers.

---

<sup>2</sup> Urban Core communities are identified as: Providence, Woonsocket, Central Falls, Pawtucket

<sup>3</sup> These communities were identified as not having enough licensed spaces for its infants and toddlers population, where there are more than 10 children ages 0-3 estimated to need care for every licensed spot, by 2019 LISC Early learning Facilities Needs Assessment; retrieved from [https://rilisc.org/wp-content/uploads/2019/11/FINAL\\_RILISC\\_ELFNA\\_ONLINE-1.pdf](https://rilisc.org/wp-content/uploads/2019/11/FINAL_RILISC_ELFNA_ONLINE-1.pdf)



Surveys were uploaded to Alchemer, an online survey data collection tool, in English and Spanish. Prior to release, the Advisory Group reviewed and tested the tool.

## Data Collection

The survey officially launched on March 15, 2021 and ran through April 23, 2021. All licensed Center providers and FCC providers were initially notified by email and encouraged to participate. All communications were provided in English and Spanish. Throughout the collection period, PCG continued to send weekly communications to providers who had not yet taken or completed the survey reminding and encouraging providers to submit a response. All weekly emails contained the purpose and reason why completing the surveys are important and beneficial to providers, and were tailored for the following populations:

**TABLE 1. WEEKLY EMAIL OUTREACH POPULATIONS**

Provider Type	Tailored Content
Provider who had not yet started the MRS	Link to complete the MRS
Providers who had started, but not yet submitted the MRS	Unique link to the provider's saved draft of the MRS
Providers who had completed the MRS	Link to the Cost of Care Survey
Providers who had started, but not yet submitted the Cost of Care survey	Unique link to the provider's saved draft of the Cost of Care Survey

All emails were sent from [RIDHSSurvey@pcgus.com](mailto:RIDHSSurvey@pcgus.com); an email address also utilized during the administration of the COVID-19 Impact Survey series and familiar to providers.

Postcards, posts on the DHS website and social media, and other mediums utilizing the Advisory Group were leveraged to have more providers take the survey.

In addition, PCG provided a survey call team to make outbound calls in English and Spanish to providers asking them to take the survey either with them over the phone, or to provide information about the survey if needed. We also offered a randomly selected raffle for \$50 Visa gift cards for four participants of the market rate survey and eight for the cost of care survey as an incentive. As PCG has supported DHS in the administration of several projects throughout 2020-2021, where PCG staff have worked directly with RI child care providers, PCG found phone calls between staff and providers allowed for the cross-support of projects, including the Coronavirus Response and Relief Supplemental Appropriations Act of 2021 Grant distribution in Spring 2021 where PCG may have called to support a provider in completing the MRS and were also able to answer questions related to the grant process.

The Advisory Group also played a key role in providing information to providers in their circles of influence. PCG provided an FAQ, an informational flyer, and PDF copies of the survey to Advisory Group members to support in their outreach.

Throughout the survey period, we monitored response rates based on the groupings mentioned above and worked to target communications to those groups through our call team and other means to boost response rates when some areas lagged. Towards the end of the survey, PCG also worked to identify providers who may have submitted a partial response and reached out to them directly to help them complete their survey.

## Data Cleanup and Analysis

Once the survey concluded, PCG exported the survey results from our online tool on April 24, 2021 and worked to “clean” the data into a usable format in Microsoft Excel. We also worked to determine the threshold to which a survey would be included in the analysis if it were a partial response, which hinged on a complete response to *at least* a completion of the rate reporting section of the survey. It was also during this time we verified that the surveys were submitted by actual licensed providers and there were no duplicate responses by matching the ID numbers submitted for each survey against DHS Provider Licensing IDs, CCAP IDs, and finally Licensee IDs. After initial data cleansing, the raw data were imported into a SQL database for further analysis and calculations.

We followed the conversion methodology below to convert the rates into one standard rate comparable to Rhode Island's weekly subsidy structure:

**TABLE 2. CONVERSION METHODOLOGY**

Reported Rate Units	Conversion Methodology
<b>Hourly</b>	The reported hourly rate was multiplied by the higher end of the reported interval of hours. For 30+ hour category, the hourly rate was multiplied by 30.
<b>Daily</b>	Divide operational hours by 7.5 and multiply by daily rate.
<b>Monthly</b>	Monthly rates divided by 4.33 weeks.
<b>Annually</b>	The annual reported rate was divided by 48 (the average number of weeks providers reported operating per year)

After rates were converted, PCG reviewed the rates for reasonableness and excluded those that were far outside what would be expected in their respective geographic areas and age formats or if they were outliers +/- two standard deviations from the mean of responses. After cleanup, survey data were then analyzed to produce the remainder of this report.

The most important factor in the MRS is determining the 75<sup>th</sup> percentile of market rates by type of care and age range, geography, and provider type. In this report, PCG followed current ACF guidelines that encourage states to weight the 75<sup>th</sup> percentile by the number of child care slots available within a given unit of analysis. In this case, current enrollment was used for weighting responses by licensed providers as the representative sample for infant/toddler, preschool, and school-age age-ranges by each geographic region, provider type, and other groupings.

## Market Rate Survey Findings

The following section of the report includes the MRS findings. The findings reported align with the requirements set by the Federal Administration for Children and Families (ACF) Office of Child Care (OCC), as detailed below.

### Response Rates

Using a census survey approach, PCG calculated the target sample size needed to achieve statistical significance for the overall sample using a 95 percent confidence level and a margin of error of +/- 5.0, we would need at least 261 responses. Overall, PCG and DHS collected a total sample for licensed providers of 437 usable responses, which means over half (54 percent) of all licensed providers (total population: 809) in the State took the MRS.

With this large sample, there is a 3.18 percent Margin of Error for the overall response rate, at the 95th percent confidence level. This means that, if the survey were repeated, we can be confident that 95 percent of the time our results would be within plus or minus 3.18 percent of true mean (average) of the full population. This large sample size suggests a high degree of reliability in our data, including at the subcategory level of the data. A margin of error ranging between 4 and 6 is considered statistically significant according to best practices<sup>4</sup>.

**TABLE 3 LICENSED PROVIDER (REPRESENTATIVE SAMPLE) RESPONSE RATE, BY PROGRAM TYPE**

Program Type	Total Population	Final Response Rate	Completion Rate	Margin of Error (95% Confidence Level)
Child Care Center	403	265	66%	3.53%
Group/Family Child Care Home <sup>5</sup>	406	172	42%	5.68%
<b>Statewide - All Providers</b>	<b>809</b>	<b>437</b>	<b>54%</b>	<b>3.18%</b>

The following table shows the percent change in completion rates between the 2021 and 2018 Market Rate Surveys. From 2018 to 2021, we saw an increase in responses from Center-based providers and a decrease in responses from Family Child Care Home providers. Overall, the completion rate in 2021 varied slightly from 2018, decreasing 8 percent.

**TABLE 4. COMPARISON OF RESPONSE RATES FROM 2021 TO 2018**

	2021			2018			Percent Change in Completion Rate
	Total Population	Total Responses	Completion Rates	Total Population	Total Responses	Completion Rates	
Child Care Centers	403	265	66%	426	259	61%	8%
Group/Family Child Care Homes	406	172	42%	479	274	57%	-26%
<b>Total</b>	<b>809</b>	<b>437</b>	<b>54%</b>	<b>905</b>	<b>533</b>	<b>59%</b>	<b>-8%</b>

The following table compares the response rates of respondents by geographic location and includes the total population of providers of each town.

**TABLE 5 LICENSED PROVIDER RESPONSE RATE BY TOWN**

Town	Respondents (N=437)			Population (N=809)	
	Total	% of Population	% of Respondents	Total	% of Population
Ashaway	2	0.2%	0.5%	2	0.2%

<sup>4</sup> 2008. DataStar, Inc. Survey Tips. Retrieved from <http://www.surveystar.com/startips/oct2008.pdf>

<sup>5</sup> At the 90% confidence interval, the margin of error for Family Child Care providers as a subcategory falls below 5%.

Town	Respondents (N=437)			Population (N=809)	
	Total	% of Population	% of Respondents	Total	% of Population
Barrington	7	0.9%	1.6%	13	1.6%
Block Island	1	0.1%	0.2%	1	0.1%
Bradford	1	0.1%	0.2%	1	0.1%
Bristol	6	0.7%	1.4%	12	1.5%
Burrillville	1	0.1%	0.2%	1	0.1%
Central Falls	6	0.7%	1.4%	18	2.2%
Charlestown	0	0.0%	0.0%	4	0.5%
Chepachet	3	0.4%	0.7%	3	0.4%
Coventry	6	0.7%	1.4%	12	1.5%
Cranston	37	4.6%	8.5%	71	8.8%
Cumberland	16	2.0%	3.7%	23	2.8%
East Greenwich	14	1.7%	3.2%	16	2.0%
East Providence	6	0.7%	1.4%	10	1.2%
Exeter	4	0.5%	0.9%	4	0.5%
Foster	1	0.1%	0.2%	1	0.1%
Glocester	0	0.0%	0.0%	1	0.1%
Greenville	3	0.4%	0.7%	3	0.4%
Harrisville	0	0.0%	0.0%	3	0.4%
Hope Valley	1	0.1%	0.2%	3	0.4%
Jamestown	1	0.1%	0.2%	3	0.4%
Johnston	18	2.2%	4.1%	29	3.6%
Kingston	0	0.0%	0.0%	2	0.2%
Lincoln	11	1.4%	2.5%	17	2.1%
Little Compton	1	0.1%	0.2%	2	0.2%
Manville	0	0.0%	0.0%	1	0.1%
Middletown	9	1.1%	2.1%	14	1.7%
Narragansett	3	0.4%	0.7%	4	0.5%
Newport	6	0.7%	1.4%	7	0.9%
North Kingstown	6	0.7%	1.4%	11	1.4%
North Providence	10	1.2%	2.3%	20	2.5%
North Scituate	1	0.1%	0.2%	1	0.1%
North Smithfield	4	0.5%	0.9%	6	0.7%
Pascoag	0	0.0%	0.0%	2	0.2%
Pawtucket	25	3.1%	5.7%	44	5.4%
Peace Dale	0	0.0%	0.0%	1	0.1%
Portsmouth	3	0.4%	0.7%	6	0.7%
Providence	147	18.2%	33.6%	311	38.4%
Richmond	1	0.1%	0.2%	1	0.1%
Riverside	4	0.5%	0.9%	5	0.6%
Rumford	4	0.5%	0.9%	6	0.7%
Smithfield	5	0.6%	1.1%	7	0.9%

Town	Respondents (N=437)			Population (N=809)	
	Total	% of Population	% of Respondents	Total	% of Population
South Kingstown	3	0.4%	0.7%	6	0.7%
Tiverton	3	0.4%	0.7%	5	0.6%
Wakefield	6	0.7%	1.4%	8	1.0%
Warren	4	0.5%	0.9%	7	0.9%
Warwick	20	2.5%	4.6%	35	4.3%
West Greenwich	1	0.1%	0.2%	3	0.4%
West Warwick	5	0.6%	1.1%	10	1.2%
Westerly	3	0.4%	0.7%	11	1.4%
Woonsocket	18	2.2%	4.1%	20	2.5%
Wyoming	0	0.0%	0.0%	2	0.2%
<b>Grand Total</b>	<b>437</b>	<b>54%</b>	<b>100%</b>	<b>809</b>	<b>100%</b>

The following table outlines response rates by additional demographic metrics, including: location within an urban core or outside of an urban core, provider language, program county location, participation in Child Care Assistance Program (CCAP), HeadStart, State Funded Pre-K, and/or BrightStars (Rhode Island's Quality Rating and Improvement System-QRIS), as well as programs within underrepresented communities.<sup>6</sup>

**TABLE 6 LICENSED PROVIDER RATE RESPONSE BY LANGUAGE, COUNTY, LOCATION, CCAP PARTICIPATION, AND UNDERREPRESENTED COMMUNITIES, PARTICIPATION IN HEADSTART AND STATE FUNDED PRE-K**

Metrics		Total Population	Response Rate	Completion Rate
Language	English	540	322	60%
	Spanish	268	115	43%
	Other	1	0	0%
County	Bristol	34	19	56%
	Kent	60	32	53%
	Newport	19	12	63%
	Providence	657	354	54%
	Washington	39	20	51%
Location	Outside Urban Core	416	241	58%
	Urban Core	393	196	50%
Underrepresented Community	Yes	40	33	83%
CCAP Participation	Private Pay Only	118	51	43%
	CCAP Participant	691	386	56%
BrightStars (QRIS) Participation	Yes	640	351	55%
	No	169	86	50%
Head Start Participation	Yes	39	16	41%
	No	770	421	55%
State Funded Pre-K Participation	Yes	39	24	62%
	No	770	413	54%
<b>Statewide</b>	<b>All Providers</b>	<b>809</b>	<b>437</b>	<b>54%</b>

<sup>6</sup> Underrepresented communities are those identified where there are more than 10 children ages 0-3 estimated to need care for every licensed spot, by 2019 LISC Early Learning Facilities Needs Assessment; retrieved from [https://rilisc.org/wp-content/uploads/2019/11/FINAL\\_RILISC\\_ELFNA\\_ONLINE-1.pdf](https://rilisc.org/wp-content/uploads/2019/11/FINAL_RILISC_ELFNA_ONLINE-1.pdf)

All subcategories were examined to determine their margin of error at the 95 percent confidence level. A full reporting of results is available in [Appendix B](#). Highlighted below are the subcategories with a margin of error less than +/- 5 percent. In this sample, we see low margins of error by provider type, location within or outside the urban core (4.96 percent and 4.1 percent respectively), and for participants in CCAP (3.3 percent), HeadStart (3.2 percent), BrightStars (3.5 percent), and State Funded Pre-K (3.2 percent). The only County reaching a margin of error of +/- 5 percent was Providence County (at 3.5 percent).

TABLE 7. MARGIN OF ERROR FOR SUBCATEGORIES OF PROVIDERS

Metrics		Target Goal (95% CL, +/- 5 MoE)	Response Rate	Margin of Error (95% CL)
Provider Type	Child Care Center	197	265	3.53%
	Group/Family Child Care Home	198	172	5.68%
Language	English	225	322	3.47%
	Spanish	159	115	6.92%
	Other	1	0	0
Location	Outside Urban Core	200	241	4.10%
	Urban Core	195	196	4.96%
CCAP Participation	CCAP Participant	193	386	3.32%
BrightStars (QRIS) Participation	Yes	241	351	3.52%
Head Start Participation	Yes	36	16	3.22%
State Funded Pre-K Participation	Yes	36	24	3.29%
<b>Statewide</b>	<b>All Providers</b>	<b>261</b>	<b>437</b>	<b>3.18%</b>

The characteristics of providers were also examined to determine the level of ‘representativeness’ of our sample. The following table outlines the representation of our final sample against the total population. In this sample, we see Center providers and English speakers were more likely to response to the survey than FCC or Spanish speaking providers, while proportional responses by County was extremely representative (at a difference of less than half a percent for each county).

TABLE 8. LEVEL OF REPRESENTATION IN MARKET RATE SURVEY

Metrics		Total Population %	Response Rate %	Difference
Provider Type	Child Care Center	50.2%	60.6%	10.8%
	Group/Family Child Care Home	49.8%	39.4%	-10.8%
Language	English	66.7%	73.7%	6.9%
	Spanish	33.0%	26.3%	-6.8%
	Other	0.0%	0.0%	-0.1%
County	Bristol	4.2%	4.3%	0.1%
	Kent	7.3%	7.3%	-0.1%
	Newport	2.3%	2.7%	0.4%
	Providence	81.2%	81.0%	-0.2%
	Washington	5.0%	4.6%	-0.2%
Location	Outside Urban Core	51.3%	55.1%	3.7%
	Urban Core	48.7%	44.9%	-3.7%
Underrepresented Community	Yes	5.0%	7.6%	2.6%
CCAP Participation	Private Pay Only	14.6%	11.7%	-2.9%
	CCAP Participant	85.4%	88.3%	2.9%
BrightStars (QRIS) Participation	Yes	79.1%	80.3%	1.2%
	No	20.9%	19.7%	-1.2%
Head Start Participation	Yes	4.8%	3.7%	-1.2%

Metrics		Total Population %	Response Rate %	Difference
State Funded Pre-K Participation	No	95.2%	96.3%	1.2%
	Yes	4.8%	5.5%	0.7%
	No	95.2%	94.5%	-0.7%

## Rates and the 75<sup>th</sup> Percentile

The CCDBG Act of 2014 requires that states certify that their subsidy reimbursement rates are at a level that provides equal access to child care for subsidy recipients as families not receiving child care assistance<sup>7</sup>. ACF benchmarks equal access for child care at the 75<sup>th</sup> percentile of market rates<sup>8</sup>. This means that the 75<sup>th</sup> percentile price is recognized by ACF as a proxy for equal access to care. At this rate, a family receiving subsidy would be able to access 75 percent of available child care slots or programs in the market (based on price alone<sup>9</sup>).

Overall, the 75<sup>th</sup> percentile of the weekly full time rates for all age groups in Center and FCC providers increased from 2018 to 2021. Center-based programs saw an average weekly rate increase of \$23.94, with the highest rate increase occurring for school-age children attending full day in the summer. In FCC programs, weekly rates increased an average of \$53.18. Before school only weekly rates saw the largest increase (almost doubling), while full day summer rates for school-age children saw the smallest increase (at 11 percent).

TABLE 9. COMPARISON OF 2021 AND 2018 CENTER-BASED RATES- 75TH PERCENTILE

Age Category	2021		2018		Change over time	
	N	75 <sup>th</sup> Percentile	N	75 <sup>th</sup> Percentile	By dollar	By Percent
Infants (Birth-18 months)	86	\$289.00	110	\$263.50	+ \$25.50	9.7%
Toddlers (18 to 36 months)	122	\$273.05	152	\$250.00	+ \$23.05	9.2%
Preschool (3 – 5 years old)	152	\$250.00	198	\$230.00	+ \$20.00	8.7%
School-age Rates						
Before School Only	34	\$93.75	95	\$75.00	+\$18.75	25.0%
After School Only	38	\$125.00	101	\$101.00	+ \$24.00	23.8%
Before and After School	53	\$167.00	98	\$150.25	+ \$16.75	11.1%
Summer Day	80	\$238.25	92	\$198.75	+ \$39.50	19.9%
All Day <sup>10</sup>	73	\$244.00	-	-	-	

TABLE 10. COMPARISON OF 2021 AND 2018 FAMILY CHILD CARE RATES- 75TH PERCENTILE

Age Category	2021		2018		Change over time	
	N	75 <sup>th</sup> Percentile	N	75 <sup>th</sup> Percentile	By dollar	By Percent
Infants (Birth-18 months)	108	\$250.00	223	\$200.00	+ \$50.00	25.0%
Toddlers (18 to 36 months)	120	\$250.00	225	\$200.00	+ \$50.00	25.0%
Preschool (3 – 5 years old)	126	\$238.75	224	\$191.50	+ 47.25	24.7%
School-age Rates						

<sup>7,8</sup>NCCCSIA. (2017, April 14). *CCDF payment rates – understanding the 75<sup>th</sup> percentile*. Retrieved from <https://childcareta.acf.hhs.gov/resource/ccdf-payment-rates-understanding-75th-percentile>

<sup>9</sup> **Note:** The measure does not consider availability of child care slots or willingness of providers to accept children with subsidies.

<sup>10</sup>The category “School-age- Full day” was a new category of data collection in the 2021 Market Rate Survey and was not collected in 2018. As a result of the COVID-19 pandemic and the move for school-age children to online, remote learning, child care providers may have served children full day during the 2019-20 and 2020-21 school years. The DHS team and Advisory Group intentionally decided to collect this data to understand the fiscal impact of full day care for school-age children.

Age Category	2021		2018		Change over time	
	N	75 <sup>th</sup> Percentile	N	75 <sup>th</sup> Percentile	By dollar	By Percent
Before School Only	43	\$175.00	116	\$90.00	+ \$85.00	94.4%
After School Only	45	\$170.00	123	\$100.00	+ \$70.00	70.0%
Before and After School	60	\$200.00	144	\$150.00	+ \$50.00	33.3%
Summer Day	60	\$200.00	103	\$180.00	+ \$20.00	11.1%
All Day <sup>11</sup>	74	\$225.00	-	-	-	

## Center-based

The following subsections detail the rates for licensed, Center providers by age category. The far-left column indicates the percentile while the remaining columns indicate the rates within each of the authorized time categories by which DHS currently reimburses, including full time (30+ hours), three-quarter time (20-29 hours), half time (10-19 hours), and quarter time (0-9 hours).

### Infant Rates

The following table includes the rates for infants (birth to 18 months), in percentile increments of 25, for Center providers.

TABLE 11. CENTER-BASED INFANT RATES

Percentile	Infant Full-Time	Infant Three Quarter-Time	Infant Half-Time	Infant Quarter-Time
Sample Size (n)	86	70	65	43
100th Percentile	\$391.92	\$315.00	\$297.00	\$257.54
75th Percentile	<b>\$289.00</b>	<b>\$250.00</b>	<b>\$215.00</b>	<b>\$126.00</b>
50th Percentile	\$265.00	\$225.00	\$185.00	\$95.00
25th Percentile	\$250.00	\$201.00	\$150.00	\$78.60

<sup>11</sup> The category "School-age- Full day" was a new category of data collection in the 2021 Market Rate Survey and was not collected in 2018. As a result of the COVID-19 pandemic and the move for school-age children to online, remote learning, child care providers may have served children full day during the 2019-20 and 2020-21 school years. The DHS team and Advisory Group intentionally decided to collect this data to understand the fiscal impact of full day care for school-age children.



### Toddler Rates

The following table includes the rates for toddlers (18 to 36 months), in percentile increments of 25, for Center providers.

TABLE 12. CENTER-BASED TODDLER RATES

Percentile	Toddler Full-Time	Toddler Three Quarter-Time	Toddler Half-Time	Toddler Quarter Time
Sample Size (n)	122	105	100	63
100th Percentile	\$447.92	\$364.00	\$273.00	\$205.00
75th Percentile	<b>\$273.05</b>	<b>\$239.79</b>	<b>\$200.00</b>	<b>\$125.00</b>
50th Percentile	\$255.00	\$215.00	\$170.00	\$87.60
25th Percentile	\$230.75	\$193.16	\$139.64	\$65.00

### Preschool Rates

The following table includes the rates for preschool age children (3 – 5 years), in percentile increments of 25, for Center providers.

TABLE 13. CENTER-BASED PRESCHOOL RATES

Percentile	Pre-School Full-Time	Pre-School Three Quarter-Time	Pre-School Half-Time	Pre-School Quarter Time
Sample Size (n)	152	134	135	90
100th Percentile	\$367.67	\$320.00	\$255.00	\$195.67
75th Percentile	<b>\$250.00</b>	<b>\$212.67</b>	<b>\$175.00</b>	<b>\$100.00</b>
50th Percentile	\$225.00	\$189.00	\$140.00	\$79.44
25th Percentile	\$196.19	\$163.36	\$118.50	\$63.00

### School-age Rates

The following table includes the rates for before school programming for school-age children (5+ years), in increments of 25, for Center providers.

TABLE 14. CENTER-BASED SCHOOL-AGE RATES: BEFORE SCHOOL ONLY

Percentile	School-age Before School Full-Time	School-age Before School Three Quarter-Time	School-age Before School Half-Time	School-age Before School Quarter-Time
Sample Size (n)	34	31	51	41
100th Percentile	\$200.00	\$200.00	\$200.00	\$110.00
75th Percentile	<b>\$93.75</b>	<b>\$75.00</b>	<b>\$69.00</b>	<b>\$69.00</b>
50th Percentile	\$60.00	\$56.00	\$55.00	\$55.00
25th Percentile	\$50.00	\$39.50	\$47.50	\$25.00

The following table includes the rates for after school programming for school-age children (5+ years), in percentile increments of 25, for Center providers.

TABLE 15. CENTER-BASED SCHOOL-AGE RATES: AFTER SCHOOL ONLY

Percentile	School-age After School Full Time	School-age After School Three Quarter-Time	School-age After School Half-Time	School-age After School Quarter-Time
Sample Size (n)	38	48	69	38
100th Percentile	\$225.00	\$217.50	\$142.50	\$130.00
75th Percentile	\$125.00	\$110.00	\$100.00	\$86.25
50th Percentile	\$110.00	\$106.00	\$89.00	\$60.00
25th Percentile	\$85.00	\$75.00	\$60.00	\$50.00

The following table includes the rates for before and after school programming for school-age children (5+ years), in percentile increments of 25, for Center providers.

TABLE 16. CENTER-BASED SCHOOL-AGE RATES: BEFORE AND AFTER SCHOOL

Percentile	School-age Before & After School Full-Time	School-age Before & After School Three Quarter-Time	School-age Before & After School Half-Time	School-age Before & After School Quarter-Time
Sample Size (n)	53	60	47	27
100th Percentile	\$200.00	\$200.00	\$170.00	\$165.00
75th Percentile	\$167.00	\$146.25	\$125.00	\$122.50
50th Percentile	\$156.00	\$128.50	\$110.00	\$100.00
25th Percentile	\$125.00	\$113.75	\$86.00	\$62.81

The following table includes the rates for all day school programming for school-age children (5+ years), in percentile increments of 25, for Center providers.

TABLE 17. CENTER-BASED SCHOOL-AGE RATES: ALL DAY

Percentile	School-age All Day Full-Time	School-age All Day Three Quarter-Time	School-age All Day Half-Time	School-age All Day Quarter-Time
Sample Size (n)	73	44	41	35
100th Percentile	\$350.00	\$310.00	\$255.00	\$277.08
75th Percentile	\$244.00	\$200.00	\$170.00	\$157.50
50th Percentile	\$200.00	\$158.53	\$126.67	\$63.00
25th Percentile	\$175.00	\$150.00	\$80.00	\$45.00

The following table includes the rates for summer camp school programming for school-age children (5+ years), in percentile increments of 25, for Center providers.

TABLE 18. CENTER-BASED SCHOOL-AGE RATES: SUMMER DAY

Percentile	School-age Summer Full-Time	School-age Summer Three Quarter-Time	School-age Summer Half-Time	School-age Summer Quarter-Time
Sample Size (n)	80	41	39	27
100th Percentile	\$350.00	\$310.00	\$255.00	\$246.00
75th Percentile	\$238.25	\$200.00	\$175.00	\$174.50
50th Percentile	\$200.00	\$150.00	\$146.00	\$103.00
25th Percentile	\$159.00	\$139.00	\$114.50	\$58.00

## Family Child Care

The following subsections detail the rates for licensed, FCC programs (including Group Family Child Care Homes and Family Child Care Homes) by age category. The far-left column indicates the percentile while the remaining columns indicate the rates within each of the authorized time categories by which DHS currently reimburses, including full time (30+ hours), three-quarter time (20-29 hours), half time (10-19 hours, and quarter time (0-9 hours).

### Infant Rates

The following table includes the rates for infants (birth to 18 months), in increments of 25, for family child care programs.

TABLE 19. FAMILY CHILD CARE INFANT RATES

Percentile	Infant Full-Time	Infant Three Quarter-Time	Infant Half-Time	Infant Quarter-Time
Sample Size (n)	108	96	83	75
100th Percentile	\$305.00	\$305.00	\$305.00	\$225.00
75th Percentile	\$250.00	\$225.00	\$199.00	\$100.00
50th Percentile	\$225.00	\$200.00	\$150.00	\$80.00
25th Percentile	\$200.00	\$158.81	\$108.50	\$60.00

### Toddler Rates

The following table includes the rates for toddlers (18 to 36 months), in increments of 25, for family child care programs.

TABLE 20. FAMILY CHILD CARE TODDLER RATES

Percentile	Toddler Full-Time	Toddler Three Quarter-Time	Toddler Half-Time	Toddler Quarter Time
Sample Size (n)	120	102	86	84
100th Percentile	\$300.00	\$275.00	\$278.67	\$260.00
75th Percentile	\$250.00	\$225.00	\$183.75	\$102.67
50th Percentile	\$220.00	\$190.00	\$150.00	\$80.00
25th Percentile	\$180.00	\$160.00	\$112.50	\$55.80

### Preschool Rates

The following table includes the rates for preschool age children (3 – 5 years), in percentile increments of 25, for family child care programs.

TABLE 21. FAMILY CHILD CARE PRESCHOOL RATES

Percentile	Pre-School Full-Time	Pre-School Three Quarter-Time	Pre-School Half-Time	Pre-School Quarter Time
Sample Size (n)	126	104	90	82
100th Percentile	\$300.00	\$300.00	\$285.00	\$185.00
75th Percentile	\$238.75	\$215.00	\$183.75	\$100.00
50th Percentile	\$187.50	\$175.00	\$137.50	\$78.00

Percentile	Pre-School Full-Time	Pre-School Three Quarter-Time	Pre-School Half-Time	Pre-School Quarter Time
25th Percentile	\$171.45	\$143.85	\$100.00	\$50.00

### School-age Rates

The following table includes the rates for all day school programming for school-age children (5+ years), in percentile increments of 25, for family child care programs.

TABLE 22. FAMILY CHILD CARE SCHOOL-AGE RATES: ALL DAY

Percentile	School-age All Day Full-Time	School-age All Day Three Quarter-Time	School-age All Day Half-Time	School-age All Day Quarter-Time
Sample Size (n)	74	57	52	49
100th Percentile	\$520.00	\$280.00	\$280.00	\$280.00
75th Percentile	\$225.00	\$200.00	\$167.50	\$125.00
50th Percentile	\$180.00	\$175.00	\$147.50	\$90.00
25th Percentile	\$162.98	\$145.00	\$98.75	\$50.00

The following table includes the rates for before school programming for school-age children (5+ years), in percentile increments of 25, for family child care programs.

TABLE 23. FAMILY CHILD CARE SCHOOL-AGE RATES: BEFORE SCHOOL

Percentile	School-age Before School Full-Time	School-age Before School Three Quarter-Time	School-age Before School Half-Time	School-age Before School Quarter-Time
Sample Size (n)	43	41	42	42
100th Percentile	\$300.00	\$280.00	\$195.00	\$175.00
75th Percentile	\$175.00	\$150.00	\$125.00	\$100.00
50th Percentile	\$150.00	\$121.47	\$90.00	\$67.50
25th Percentile	\$110.00	\$100.00	\$76.00	\$43.08

The following table includes the rates for after school programming for school-age children (5+ years), in percentile increments of 25, for family child care programs.

TABLE 24. FAMILY CHILD CARE SCHOOL-AGE RATES: AFTER SCHOOL

Percentile	School-age After School Full Time	School-age After School Three Quarter-Time	School-age After School Half-Time	School-age After School Quarter-Time
Sample Size (n)	45	43	46	46
100th Percentile	\$300.00	\$250.00	\$195.00	\$175.00
75th Percentile	\$170.00	\$147.50	\$120.00	\$100.00
50th Percentile	\$150.00	\$125.00	\$95.00	\$67.50
25th Percentile	\$100.00	\$100.00	\$76.00	\$43.50

The following table includes the rates for before and after school programming for school-age children (5+ years), in percentile increments of 25, for family child care programs.

TABLE 25. FAMILY CHILD CARE SCHOOL-AGE RATES: BEFORE AND AFTER SCHOOL

Percentile	School-age Before & After School Full-Time	School-age Before & After School Three Quarter-Time	School-age Before & After School Half-Time	School-age Before & After Quarter-Time
Sample Size (n)	60	57	49	44
100th Percentile	\$300.00	\$240.00	\$250.00	\$240.00
75th Percentile	\$200.00	\$175.00	\$150.00	\$113.75
50th Percentile	\$161.15	\$145.00	\$130.00	\$87.50
25th Percentile	\$148.75	\$120.00	\$81.15	\$49.63

The following table includes the rates for summer camp school programming for school-age children (5+ years), in percentile increments of 25, for family child care programs.

TABLE 26. FAMILY CHILD CARE SCHOOL-AGE RATES: SUMMER DAY

Percentile	School-age Summer Full-Time	School-age Summer Three Quarter-Time	School-age Summer Half-Time	School-age Summer Quarter-Time
Sample Size (n)	60	50	47	44
100th Percentile	\$300.00	\$280.00	\$280.00	\$280.00
75th Percentile	\$200.00	\$191.56	\$151.00	\$126.25
50th Percentile	\$180.00	\$175.00	\$142.50	\$85.00
25th Percentile	\$160.00	\$141.25	\$92.50	\$45.00

## Non-traditional Hours

Only a small number of providers reported offering care during non-traditional hours, such as weekends, evenings, and overnight care. Of the 435 providers who responded to this question, approximately 3 to 5 percent of providers said they provided care during these times. Of those who did provide this type of care, providers were almost entirely FCC; only one Center reported offering evening care.

TABLE 27. COUNT OF NON-TRADITIONAL HOURS PROVIDED BY PROVIDER TYPE

N=435	Weekend Care	Evening care (until 12am)	Overnight care	None	Other
All Programs	21	19	15	384	20
Centers	0	1	0	256	9
FCC	21	18	15	128	11

## Additional Questions

### COVID-19 Rate Adjustments

A majority of providers reported they did not change their rates due to the COVID-19 pandemic. This held true in all types of programs and in all age groups. Those who reported they did not change rates ranged from 65 percent to 73 percent of respondents depending on the age group served; inversely, 23 percent to 31 percent of providers reported increasing rates during this time, depending on age group. Only a small percent of programs reported decreasing their rates in all age groups.

TABLE 28. COUNT OF RATE ADJUSTMENTS DUE TO COVID-19, BY AGE GROUP

N=436	Infant			Toddler			Preschool			School-age Before			School-age Full Day		
Decrease, No Change, or Increase?	Decrease	No Change	Increase	Decrease	No Change	Increase	Decrease	No Change	Increase	Decrease	No Change	Increase	Decrease	No Change	Increase
All Programs	8	192	75	10	231	76	15	273	84	8	194	72	9	177	85
Centers	2	94	31	4	130	31	8	167	38	3	103	34	3	93	45
FCC	6	98	44	6	101	45	7	106	46	5	91	38	6	84	40

### Additional Fees, Discounts, and Services

Although not particularly common, some providers do charge additional rates on top of the rates detailed earlier. These include rates for early release days, public school closure, public school vacation, and summer break. The most commonly reported additional rate was for public school vacations.

TABLE 29. COUNT OF ADDITIONAL RATES CHARGED BY PROVIDER TYPE

N=435	Early Release Days	Public School Closure	Public School Vacation	Summer Break	Other	None of these
All Programs	20	55	75	71	11	327
Centers	14	30	46	46	6	192
FCC	6	25	28	25	5	135

Sibling and employee discounts were reported as the most common types provided, with nearly 75 percent of responding providers offering one and/or the other. Sliding fees and low income rate discounts were much more rare amongst respondents.

TABLE 30. DISCOUNTS OFFERED BY PROVIDERS

N= 261	Sliding Fee		Low Income Rate		Sibling Discount		Family Scholarship		Employee Discount		Vacation / Illness	
	# Providers	Avg # Children	# Providers	Avg # Children	# Providers	Avg # Children	# Providers	Avg # Children	# Providers	Avg # Children	# Providers	Avg # Children
All Programs	34	6	25	3	201	5	51	5	157	2	106	12
Centers	26	7	16	4	174	6	47	5	150	7	86	20
FCC	8	2	9	3	27	2	4	1	7	0	20	2

Providers were also asked if they charged any additional fees, and what that charge was. Below, we detailed the most common types of fees charged and the average cost of said fees. Overall, we asked whether providers charged for:

- One time registration
- Annual Registration
- Weekend fee
- Field trip fee
- Waitlist fee
- Bank fees
- Other fees
- Transportation Fee
- Food/Meals Fee
- Late pick up/early drop off fee

- Hold fee
- Deposit for future spot
- Enrichment activity fee
- Optional services
- Late payment fee
- Materials/supplies fee
- Extended day fee
- Night Care Fee

TABLE 31. MOST COMMON ADDITIONAL FEES CHARGED BY PROVIDERS

Program Type	One Time Registration		Annual Registration		Deposit for future spot		Bank Fees		Late Pick up Early Drop off		Late Payment Fee		Extended Day Fee	
N= 360	Count	Average \$	Count	Average \$	Count	Average \$	Count	Average \$	Count	Average \$	Count	Average \$	Count	Average \$
Total	205	\$61	128	\$61	81	\$169	174	\$27	186	\$9	152	\$15	51	\$17
Centers	146	\$64	114	\$58	66	\$196	137	\$25	129	\$15	120	\$15	31	\$17
FCC	59	\$48	14	\$55	15	\$138	37	\$28	57	\$18	32	\$18	20	\$18

## Support Services

Providers were asked if they provide any additional support services to children in care. Overall, the most commonly cited support services offered were Diapering/Toileting Assistance for an Older Child (55 percent overall; the most commonly cited response for FCC providers at 23 percent) and Behavioral Supervision or Supports for Children with Challenging Behaviors (54 percent overall, the most commonly cited response for Center providers at 40 percent).

TABLE 32. SUPPORT SERVICES OFFERED BY PROVIDER TYPE

Support Services Offered (N=201)	Center s		FCC	
	Count	%	Count	%
Behavior Supervision/Supports for children with challenging behaviors	80	40%	30	15%
Communication Supports to children who are non-verbal or have language delays	43	21%	41	20%
Occupational therapy for a child with sensory processing challenges	28	14%	15	7%
Diapering/Toileting Assistance for an older child	65	32%	47	23%
Health Monitoring for a child with a chronic medical condition	36	18%	12	6%
Medication Management- for a child requiring ongoing medication & maintain recordkeeping	64	32%	30	15%
Mobility Assistance to help a child with a wheelchair, crutches, or limited ability to walk	32	16%	12	6%
Vision Supports and program changes to include a child with impaired vision	28	14%	14	7%
Nursing Care – Access to a nurse for children requiring medical monitoring or intervention	31	15%	4	2%
Physical Therapy - access for physical or occupational therapy services or providing activities to support child's therapy goals	28	14%	10	5%
Eating Assistance for a child who has food or texture sensitivities or physical challenges	40	20%	34	17%
Other	7	3%	2	1%

Center providers more likely to cite funding services through State or Federal Funding sources, while FCC providers more likely to cite Family Fees as their primary funding source.



TABLE 33. FUNDING SOURCES FOR SUPPORT SERVICES BY PROVIDER TYPE

Support Services Offered (N=91)	Centers		FCC	
	Family Fee (Count)	State/ Federal Funding (Count)	Family Fee (Count)	State/ Federal Funding (Count)
Behavior Supervision/Supports for children with challenging behaviors	4	29	11	5
Communication Supports to children who are non-verbal or have language delays	1	20	16	3
Occupational therapy for a child with sensory processing challenges	0	16	9	3
Diapering/Toileting Assistance for an older child	7	14	15	2
Health Monitoring for a child with a chronic medical condition	3	11	3	2
Medication Management- for a child requiring ongoing medication & maintain recordkeeping	6	12	16	2
Mobility Assistance to help a child with a wheelchair, crutches, or limited ability to walk	3	10	3	4
Vision Supports and program changes to include a child with impaired vision	3	10	4	5
Nursing Care – Access to a nurse for children requiring medical monitoring or intervention	2	12	2	1
Physical Therapy - access for physical or occupational therapy services or providing activities to support child's therapy goals	1	17	5	3
Eating Assistance for a child who has food or texture sensitivities or physical challenges	4	11	14	3
Other	1	4	2	1

## Rate Setting

Overall, the top three information sources providers use to set their private pay rates were:

- Rates of nearby child care programs (53 percent)
- Overall operating costs (51 percent)
- DHS CCAP reimbursement rates (46 percent)

By provider type, Center providers most frequently cited utilizing overall operating costs to set private pay rates, while FCC programs most frequently cited utilizing CCAP reimbursement rates. This was consistent with the 2018 MRS findings where the majority of FCCs reported utilizing the DHS Reimbursement Rates (83.5 percent) and Centers most frequently cited utilizing their overall operating costs (47 percent.)

TABLE 34. SOURCES OF INFORMATION USED TO SET PRIVATE PAY RATES

N= 435	Sources of Information					
	DHS CCAP Reimbursement Rates	Rates Nearby Child Care	Board of Directors	What families can afford	Overall Operating Costs	Other
Total	200	232	72	126	221	36
Centers	89	180	70	79	182	28
FCCs	111	52	2	47	39	8

Programs operating outside of the urban core primarily utilized rates of nearby child care programs, while programs operating within the urban core more frequently reported utilizing the CCAP reimbursement rates to set private pay rates.

## Program Operation

Below, we have detailed the average number of children being served by age group by the type of children served (private pay, CCAP, State Pre-K, and Head Start). For both Center providers and FCC providers, data indicated that providers served about half as many CCAP children as they did private pay only children.

The last section of this table also shows the average number of children programs would like to serve at full capacity. Overall, programs showed greater interest in expanding capacity for preschool and school-age care, indicating that they would prefer to serve 50 to 100 percent more children in these age categories. Programs showed less interest in expanding capacity for infants and toddlers.

TABLE 35. AVERAGE NUMBER OF CHILDREN SERVED, BY PROVIDER TYPE

N=436	Average Infants Served	Average Toddlers Served	Average Preschool Served	Average Before / After SA Served	Average School-age Full Day Served
<b>Private Pay</b>					
All Programs	7.26	7.88	17.30	14.41	8.36
Centers	7	10	21	17	9
FCC	2	2	2	5	4
<b>CCAP</b>					
All Programs	4.76	3.58	7.07	6.89	5.84
Centers	4	4	9	10	8
FCC	1	1	1	4	2
<b>State Pre-K</b>					
All Programs	0	0	27.43	0	0
Centers	0	0	27	0	0
FCC	0	0	0	0	0
<b>Head Start</b>					
All Programs	4.44	7.50	28.58	0	0
Centers	4	7	28	0	0
FCC	0	0	0	0	0
<b>Number of Children Providers Want to Serve</b>					
All Programs	8.93	11.18	26.74	33.03	19.66
Centers	15	18	41	52	36
FCC	4	4	4	5	6

## Populations Served

Providers were asked about children from the following populations being served in their programs: Children with disabilities, children experiencing homelessness, children who speak English as a second language, and children involved in the foster care system. While more than half of programs did not report serving any children with disabilities (57 percent), those experiencing homelessness (75 percent), or in foster care (51 percent), 63 percent of programs reported serving children who speak English as a second language. Of the 11 percent of programs whose population is 76 percent or more children who speak English as a second language, 98% of these programs were FCC providers (48 of the 49 programs citing this response). FCCs were proportionally more likely to have a population that was 51-75 percent children who speak English as a second language. Programs where more than 51 percent of children speak English as a second language were located within the Urban Core and participate in CCAP and BrightStars.

TABLE 36. POPULATION SERVED: CHILDREN SPEAKING ENGLISH AS SECOND LANGUAGE

Provider Type (N=434)		Percentage Participating in Program					
		0%	1-25%	26-50%	51-75%	76% or more	Unknown or we do not track
Total	Count	144	168	37	21	49	10
	Percent	33%	39%	9%	5%	11%	2%
Centers	Count	89	139	22	3	1	8
FCC	Count	55	29	15	18	48	2

Most programs do not report serving children with disabilities; approximately 35 percent of programs report serving any children with disabilities.

TABLE 37. POPULATION SERVED: CHILDREN WITH DISABILITIES

Provider Type (N=434)		Percentage Participating in Program					
		0%	1-25%	26-50%	51-75%	76% or more	Unknown or we do not track
Total	Count	248	143	6	1	2	7
	Percent	57%	33%	1%	0.2%	0.5%	2%
Centers	Count	125	123	4	0	1	5
FCC	Count	123	20	2	1	1	2

Similarly, most programs do not report serving children experiencing homelessness.

TABLE 38. POPULATION SERVED: CHILDREN EXPERIENCING HOMELESSNESS

Provider Type (N=434)		Percentage Participating in Program					
		0%	1-25%	26-50%	51-75%	76% or more	Unknown or we do not track
Total	Count	324	59	2	0	2	18
	Percent	75%	14%	0.5%	0%	0.5%	4%
Centers	Count	184	54	1	0	1	16
FCC	Count	140	5	1	0	1	2

Forty-two percent of programs report that at least 1 percent of children in their program are involved in foster care.

TABLE 39. POPULATION SERVED: CHILDREN INVOLVED IN FOSTER CARE

Provider Type (N=434)		Percentage Participating in Program					
		0%	1-25%	26-50%	51-75%	76% or more	Unknown or we do not track
Total	Count	220	169	8	2	2	11
	Percent	51%	39%	2%	0.5%	0.5%	3%
Centers	Count	94	154	5	0	1	6
FCC	Count	126	15	3	2	1	5

## Operating Hours

Most programs (91 percent, 399 of 435) reported operating standard hours, that is a consistent opening and closing time each day they operated. Programs operating non-standard hours were slightly more likely to be FCC programs (53 percent compared to 47 percent for Center providers).

FCCs reported slightly longer operating hours, with an average of 11 hours, 22 minutes of operating time per day; while Center providers operated an average of 9 hours and 31 minutes per day.

**TABLE 40. AVERAGE OPERATING HOURS PER DAY BY PROVIDER TYPE**

	Centers (HH:MM)	FCC (HH:MM)
Average Opening Time	7:22 AM	6:37 AM
Average Closing Time	5:00 PM	5:58 PM
Average Hours Open Per Day	9:31	11:22
Average Hours Open Per Day (Pre-COVID)	10:30	11:08

Fifty-three percent of providers reported altering their hours due to COVID-19. These programs were more likely to be Center providers, operating outside of the urban core. Programs operating in Underrepresented areas were also more likely to report adjusting their operating hours (count: 22 vs. 11). Where providers adjusted their hours, FCCs on average gained 14 minutes per day, while Center providers lost nearly an hour of operating time per day.

**TABLE 41. COUNT OF PROGRAMS REPORTING ADJUSTING HOURS DUE TO COVID-19**

Programs Reporting Change in Hours due to COVID-19 (N=435)		No	Yes
Provider Type	Total	205	230
	Centers	80	185
	FCC	125	45
Location	Outside Urban Core	93	146
	Urban Core	112	84

While 99-100 percent of responding programs reported being open Monday-Friday, only 2 percent are open on Sundays and 5 percent operate on Saturdays. Of the programs that report weekend operating hours, 100 percent of the providers operating on Sundays are FCC programs and 99 percent that operate Saturday hours are also FCCs. In Underrepresented Communities, only 2 programs reported operating on either Saturdays or Sundays. All but 1 of the programs operating on Saturdays or Sundays are located in Providence County (while the other exists in Newport County).

**TABLE 42. DAYS OF WEEK PROGRAMS OPERATE**

Provider Type (N-435)	Sunday	Monday	Tuesday	Wednesday	Thursday	Friday	Saturday
Total (Count)	8	431	435	433	435	433	20
Total (%)	2%	99%	100%	100%	100%	100%	5%
Centers (Count)	0	264	265	263	265	263	1
FCC (Count)	8	167	170	170	170	170	19

On average, programs (n=435) report being open 48 weeks per year (47 weeks for Center providers, 48 weeks for Center providers). Programs where the provider primarily speaks Spanish reported operating on average 50 weeks per year, while programs where the provider primarily speaks English reported operating an average of 47 weeks per year. While programs participating in BrightStars also operate an average of 48 weeks per year, variation appears among star quality rating levels. Programs not participating in BrightStars operate fewer weeks than the average program.

**TABLE 43. AVERAGE WEEKS OPEN BY BRIGHTSTARS PARTICIPATION**

		Average Weeks Open
Total		48
BrightStars Participation	No	44
	Yes	48

		Average Weeks Open
BrightStars Rating	1	48
	2	49
	3	43
	4	49
	5	46

### Child Care Assistance Program (CCAP)

Most respondents participate in CCAP (88 percent). This is similar to the 2018 population, which indicated 86 percent of respondents participate in CCAP. The 2021 and 2018 samples reveal similar trends in Center providers' CCAP participation with a difference of only 1 percent between the two samples. The 2021 and 2018 FCC provider samples indicate a slight increase of FCC providers' CCAP participation (9 percent).

**TABLE 44 CCAP PARTICIPATION: 2021 VS 2018**

	Total		Centers		FCC	
	Count	%	Count	%	Count	%
<b>2021</b>						
Yes	383	88%	224	85%	159	94%
No	50	12%	40	15%	10	6%
Total	433	100%	264	100%	169	100%
<b>2018</b>						
Yes	429	86%	222	86%	207	86%
No	71	14%	36	14%	35	15%
Total	500	100%	258	100%	242	100%

### Changes in Enrollment

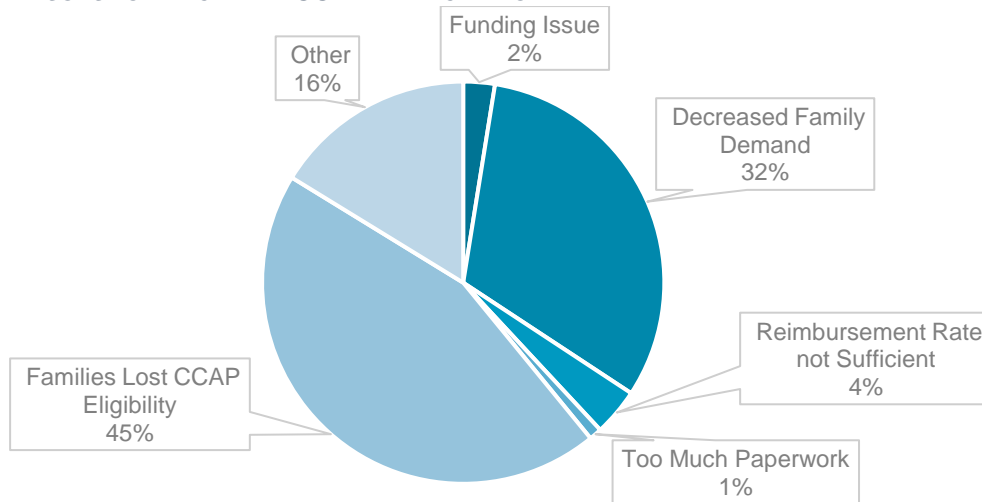
Most respondents (61 percent) indicated the number of CCAP children they serve decreased in the last year. FCC providers were more likely to maintain their CCAP enrollment than Center providers.

**TABLE 45 CHANGES IN CCAP ENROLLMENT (12 MONTHS)**

	Total		Centers		FCC	
	Count (n=383)	%	Count (n=224)	%	Count (n=159)	%
Decreased	234	61%	143	64%	91	57%
Increased	39	10%	22	10%	17	11%
Stayed the Same	110	29%	59	26%	51	32%

Respondents who indicated a decrease in CCAP children serviced were asked to share why they experienced a decrease. As shown below, most respondents indicated the decrease was due to families losing their CCAP eligibility (45 percent, n=176) or a decrease in family demand (32 percent, n=125).

**CHART 1 REASONS FOR DECLINE IN CCAP PARTICIPATION**



Within the “Other” category (n=62), respondents indicated COVID-19 related reasons (58 percent, n=36) and parents losing their jobs (15 percent, n=11) as primary reasons for the decline in service to CCAP families.

### *Capping CCAP Enrollment*

When asked if programs limit the number of CCAP slots in their program, the majority reported “No” (82 percent). Where programs cap CCAP slots, FCC programs are more likely to have a cap on subsidized slots than Center providers.

**TABLE 46 CAPS/LIMITS TO SUBSIDY SLOTS**

	Total		Centers		FCC	
	Count	%	Count	%	Count	%
<b>Yes</b>	70	18%	27	12%	43	27%
<b>No</b>	313	82%	197	88%	116	73%
<b>Total</b>	383	100%	224	100%	159	100%

Of the 70 programs who cap CCAP enrollment, most programs (49 percent) limit subsidy slots up to 25 percent of their enrollment capacity. The most commonly reported reason for capping subsidy enrollment is the subsidy reimbursement rate being too low (36 percent of comments).

### *Familiarity with CCAP*

Most providers (77 percent) are familiar with CCAP. While most comments indicated respondents were unsure of how to increase awareness of CCAP, a common theme in the recommendations for how to increase awareness focused on more detailed information, resources, and supports being available for providers.

**TABLE 47 RESPONDENT FAMILIARITY WITH CCAP**

	Total		Centers		FCC	
	Count	%	Count	%	Count	%
<b>Yes</b>	37	77%	33	85%	4	44%
<b>No</b>	11	23%	6	15%	5	56%
<b>Total</b>	48	100%	39	100%	9	100%

### *Encouraging Participation*

When asked to share reasons that may prevent or limit CCAP participation, most respondents who are already serving CCAP children (76 percent) indicated they are willing to serve more CCAP eligible children. Providers who are not participating in CCAP indicated their “Capacity is full with private pay” (52 percent).

TABLE 48 REASONS THAT MAY PREVENT YOU FROM PARTICIPATING OR LIMIT YOUR CURRENT PARTICIPATION IN DHS CCAP

	Total (n=433)		CCAP Provider (n=383)		Non-CCAP Provider (n=50)	
	Count	%	Count	%	Count	%
I serve or am willing to serve all subsidized children.	290	67%	290	76%	N/A	
Capacity is full with private pay.	56	13%	30	8%	26	52%
Program has a long waitlist of private pay families	36	8%	17	4%	19	38%
No demand for subsidized care in the program's area	0	0%	0	0%	0	0%
Subsidy reimbursement rates are not sufficient	64	15%	46	12%	18	36%
Required participation in QRIS	14	3%	6	2%	8	16%
Reimbursement received too long after service is provided	21	5%	19	5%	2	4%
Too much administrative work involved	29	7%	10	3%	19	38%
Disagree with policies associated with the subsidy program	4	1%	3	1%	1	2%
Challenges collecting co-payments from subsidy recipient families	24	6%	22	6%	2	4%
Turnover among subsidy recipient families	20	5%	17	4%	3	6%
I don't know enough about DHS's subsidy program to participate	0	0%	0	0%	0	0%
Child behavioral challenges	19	4%	16	4%	3	6%
Other	20	5%	12	3%	8	16%
Not Familiar with DHS CCAP	11	3%	N/A		11	22%
Total	433	100%	383	100%	50	100%

Most respondents indicated none of the incentives listed would encourage their participation in CCAP (52 percent). Of the incentives listed, the top three that may encourage CCAP participation are increased subsidy rates (30 percent), opportunities for additional resources including professional development (20 percent), and assistance with subsidy management and administration (18 percent).

## Program Quality

The majority of respondents (88 percent) participate in Rhode Island's Quality Rating Improvement System (QRIS), BrightStars. Of the 379 providers participating in BrightStars, 60 percent are Centers and 40 percent are FCC. Most respondents held a BrightStars Rating of Level 1 (n=139, 40 percent) or Level 2 (n=129, 37 percent).

TABLE 49 PROGRAMS PARTICIPATING IN BRIGHTSTARS (QRIS)

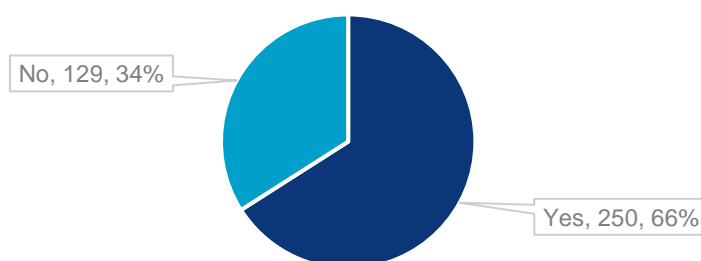
N=432		All		Centers		FCC	
		Count	% (n=432)	Count	% (n=263)	Count	% (n=169)
BrightStars Rating	1	139	32%	58	22%	81	48%
	2	123	28%	61	23%	62	37%
	3	28	6%	26	10%	2	1%
	4	46	11%	42	16%	4	2%
	5	12	3%	12	5%	0	0%
	No rating Indicated	31	7%	27	10%	4	2%
Do not participate		53	12%	12%	37	14%	16
Total		432	100%	100%	263	100%	169

Administrative data provided to the research team in March 2021 was mapped into the survey data to identify the BrightStars ratings listed in the table above. The “No level indicated” are those who indicated they participate in BrightStars in their survey response, but did not have a BrightStars rating within the administrative data.

Respondents’ BrightStars participation is similar both inside the urban core (48 percent) and outside of the urban core (52 percent). Most respondents who are participating in BrightStars are also participating in CCAP (97 percent). A full breakdown of BrightStars participation by additional metrics may be found in the [Appendix B. Data Analysis](#).

In an effort to better understand the perceptions of BrightStars participation, the survey asked providers to indicate if tiered reimbursement was an incentive to participate in BrightStars. Most respondents (n=250, 66 percent) indicated the tiered reimbursement is an incentive that encourages them to participate in BrightStars.

**FIGURE 1. PERCENT OF PROVIDERS INDICATING THAT TIERED REIMBURSEMENT IS A CCAP INCENTIVE**



The participants who do not participate in BrightStars were asked why they have not participated. Respondents could indicate one or more areas that hinder their participation. The majority of providers indicated “Other” (45 percent) or it was “Time Consuming” (20 percent).

**TABLE 50 RESPONDENTS REASONS FOR NOT PARTICIPATING IN BRIGHTSTARS**

Reason	All		Centers		FCC	
	Count	% (n=71)	Count	% (n=53)	Count	% (n=18)
Too Much Paperwork	13	18%	8	15%	5	28%
CCAP Rates do not Support Quality	4	6%	3	6%	1	6%
Time Consuming	14	20%	11	21%	3	17%
Too Costly	8	11%	7	13%	1	6%
Other	32	45%	24	45%	8	44%
Total	71	100%	53	100%	18	100%

Other comments revealed additional themes for providers choosing not to participate in BrightStars, which are detailed below. It should be noted that 19 percent (N=6) of providers indicated they are in the process of applying to participate in BrightStars or plan to in the future.

**TABLE 51 ADDITIONAL COMMENTS: RESPONDENTS REASONS FOR NOT PARTICIPATING IN BRIGHTSTARS**

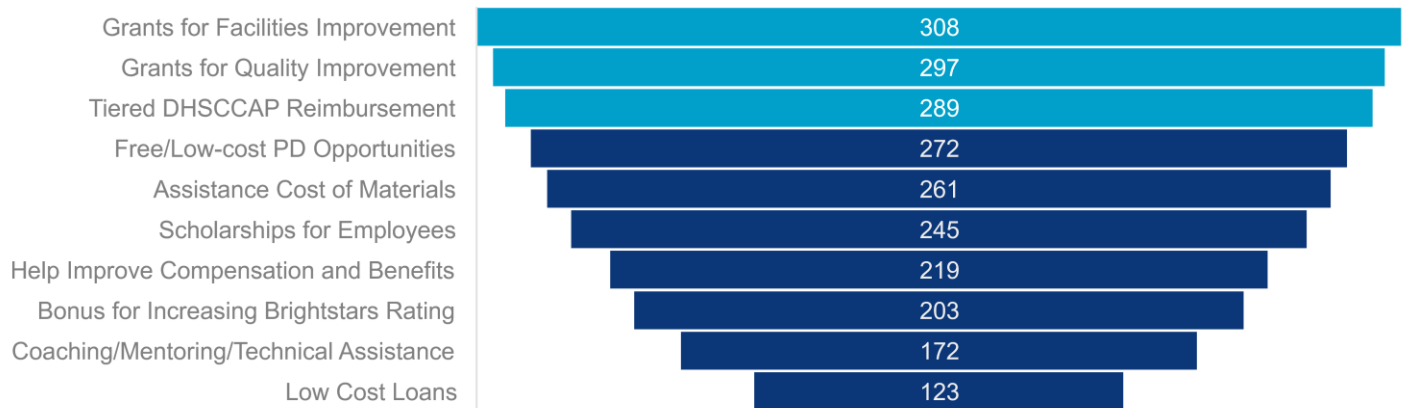
Other Comments N=32	Count	%
Prefer Not To	3	9%
Do not agree with the rating system/standards/does not reflect quality	8	25%
Does not align with our program/Montessori	6	19%
In process of applying or plan to in future	6	19%



Other Comments N=32	Count	%
Other (no additional comments)	8	25%
<b>Total</b>	<b>32</b>	<b>100%</b>

The survey also asked participants to indicate what supports and resources would help them improve the quality of their program. Most respondents selected grants for facilities improvement (n=308), grants for quality improvement (n=297), and tiered CCAP reimbursement (n=289). These top three reasons were selected by both FCC and Centers; while more FCC cited “Tiered CCAP Reimbursement” as their top support and Center providers selected “Grants for Facilities Improvement” as their top support.

**CHART 3 WHAT SUPPORTS AND RESOURCES WOULD ASSIST YOU IN IMPROVING THE QUALITY OF YOUR PROGRAM?**



## Narrow Cost Analysis (Cost of Care)

The Narrow Cost Analysis is required by ACF as an alternative method to establish subsidy payment rates<sup>12</sup>. For this survey administration, the data for the Narrow Cost Analysis was gathered using the Cost of Care survey. For any sustainable business to operate, the revenue being received must be able to cover operating expenses. The intention of the Narrow Cost Analysis is to better understand the cost of providing child care services and if the subsidy reimbursement rate is adequate in covering a provider's cost of care. While ACF allows for a variety of data collection methodologies, DHS chose to administer an optional survey to child care providers as part of the MRS outreach. Please review the [Methodology section](#) above for more information on the development and distribution of this survey.

### Response Rate

As noted above, the Narrow Cost Analysis (referred to as the Cost of Care survey) was distributed as a secondary survey to providers who completed the MRS. The majority of questions were optional to encourage providers to disclose new program information, as this was the first time the Narrow Cost Analysis was completed in the State.

Almost 40 percent of providers who completed the MRS went on to complete the Cost of Care form; this represents approximately 20 percent of the total provider universe. Again, Center providers were more likely to complete the Cost of Care form than FCC providers.

**TABLE 52 COST OF CARE SURVEY RESPONSE RATE (LICENSED PROVIDERS), BY PROGRAM TYPE**

Program Type (Licensed Provider)	Total Market Rate Survey Responses	Final Cost of Care Survey Responses	% of Total Market Rate Sample	% of Total Provider Universe
Centers	265	104	39%	26%
Group/Family Child Care Home	172	59	34%	14%
<b>Statewide - All Providers</b>	<b>437</b>	<b>163</b>	<b>37%</b>	<b>20%</b>

At the 95 percent confidence level, all margins of error for stratified subcategories were outside of the +/- 5 percent threshold; with the overall response rate at a margin of error at 6.8%.

The following table compares the response rates of respondents by geographic location and includes the total population of providers of each town. The table includes the total respondents in comparison to the total population ( $N=809$ ) and the total sample ( $N=163$ ).

**TABLE 53. COST OF CARE RESPONSE RATE BY TOWN**

Town	Respondents			Population	
	Total	% of Population	% of Respondents	Total	% of Population
Ashaway	0	0.0%	0.0%	2	0.2%
Barrington	1	0.1%	0.6%	13	1.6%
Block Island	0	0.0%	0.0%	1	0.1%
Bradford	1	0.1%	0.6%	1	0.1%
Bristol	2	0.2%	1.2%	12	1.5%
Burrillville	1	0.1%	0.6%	1	0.1%
Central Falls	1	0.1%	0.6%	18	2.2%
Charlestown	0	0.0%	0.0%	4	0.5%
Chepachet	2	0.2%	1.2%	3	0.4%

<sup>12</sup> <https://www.acf.hhs.gov/occ/policy-guidance/ccdf-acf-pi-2018-01>

Town	Respondents			Population	
	Total	% of Population	% of Respondents	Total	% of Population
Coventry	2	0.2%	1.2%	12	1.5%
Cranston	13	1.6%	8.0%	71	8.8%
Cumberland	7	0.9%	4.3%	23	2.8%
East Greenwich	2	0.2%	1.2%	16	2.0%
East Providence	1	0.1%	0.6%	10	1.2%
Exeter	4	0.5%	2.5%	4	0.5%
Foster	0	0.0%	0.0%	1	0.1%
Glocester	0	0.0%	0.0%	1	0.1%
Greenville	2	0.2%	1.2%	3	0.4%
Harrisville	0	0.0%	0.0%	3	0.4%
Hope Valley	1	0.1%	0.6%	3	0.4%
Jamestown	0	0.0%	0.0%	3	0.4%
Johnston	7	0.9%	4.3%	29	3.6%
Kingston	0	0.0%	0.0%	2	0.2%
Lincoln	8	1.0%	4.9%	17	2.1%
Little Compton	0	0.0%	0.0%	2	0.2%
Manville	0	0.0%	0.0%	1	0.1%
Middletown	5	0.6%	3.1%	14	1.7%
Narragansett	1	0.1%	0.6%	4	0.5%
Newport	3	0.4%	1.8%	7	0.9%
North Kingstown	3	0.4%	1.8%	11	1.4%
North Providence	0	0.0%	0.0%	20	2.5%
North Scituate	1	0.1%	0.6%	1	0.1%
North Smithfield	2	0.2%	1.2%	6	0.7%
Pascoag	0	0.0%	0.0%	2	0.2%
Pawtucket	10	1.2%	6.1%	44	5.4%
Peace Dale	0	0.0%	0.0%	1	0.1%
Portsmouth	1	0.1%	0.6%	6	0.7%
Providence	50	6.2%	30.7%	311	38.4%
Richmond	0	0.0%	0.0%	1	0.1%
Riverside	2	0.2%	1.2%	5	0.6%
Rumford	3	0.4%	1.8%	6	0.7%
Smithfield	2	0.2%	1.2%	7	0.9%
South Kingstown	1	0.1%	0.6%	6	0.7%
Tiverton	2	0.2%	1.2%	5	0.6%
Wakefield	2	0.2%	1.2%	8	1.0%
Warren	2	0.2%	1.2%	7	0.9%
Warwick	7	0.9%	4.3%	35	4.3%
West Greenwich	1	0.1%	0.6%	3	0.4%
West Warwick	1	0.1%	0.6%	10	1.2%
Westerly	1	0.1%	0.6%	11	1.4%
Woonsocket	8	1.0%	4.9%	20	2.5%

Town	Respondents			Population	
	Total	% of Population	% of Respondents	Total	% of Population
Wyoming	0	0.0%	0.0%	2	0.2%
<b>Grand Total</b>	<b>163</b>	<b>20%</b>	<b>100%</b>	<b>809</b>	<b>100%</b>

Reflecting on the levels of representation of this sample, this sample was very representative by County location and State Funded Pre-K (all with a differential of less than a 1 percent). Where providers participated in BrightStars (82 percent of this sample), providers were more likely to be rated a 2 star or higher.

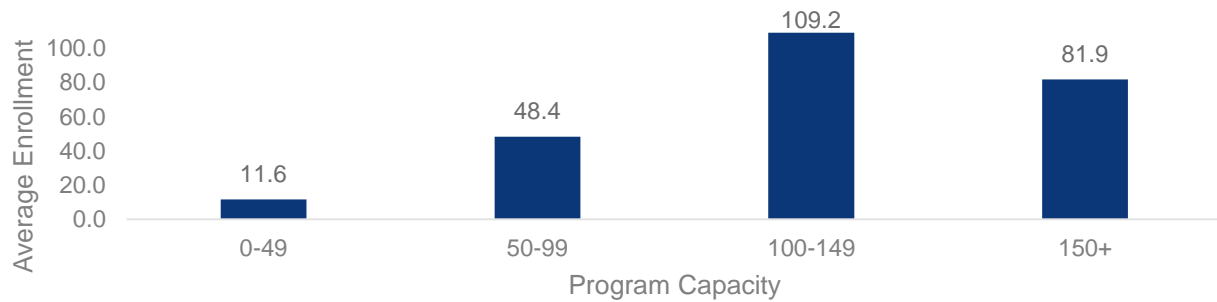
**TABLE 54. LEVELS OF REPRESENTATION IN COST OF CARE**

Analysis Metrics		Total Population %	Response Rate %	Difference
Provider Type	FCC	50.2%	36%	-14.0%
	Centers	49.8%	64%	14.0%
Location	Outside Urban Core	51.4%	58%	6.2%
	Urban Core	48.6%	42%	-6.2%
Language	English	66.7%	81%	14.2%
	Spanish	33.1%	19%	-14.1%
	Other	0.1%	0%	-0.1%
County	Bristol	4.2%	4%	-0.5%
	Kent	7.4%	7%	-0.7%
	Newport	2.3%	3%	0.7%
	Providence	81.2%	81%	-0.2%
	Washington	4.8%	6%	0.7%
CCAP Participation	Private Pay Only	14.6%	9%	-5.4%
	CCAP Participant	85.4%	91%	5.4%
Underrepresented Community	Underrepresented Community	4.9%	9%	4.3%
Head Start Participation	Yes	4.8%	2%	-2.4%
	No	95.2%	98%	2.4%
State PreK	Yes	4.8%	6%	0.7%
	No	95.2%	94%	-0.7%
BrightStars Participation	Yes	79.1%	82%	2.5%
	No	20.9%	18%	-2.5%
BrightStars Quality Level	1	35.7%	31%	-5.0%
	2	26.2%	29%	3.2%
	3	5.9%	7%	0.8%
	4	9.0%	12%	3.2%
	5	2.2%	2%	0.2%

## Center-based Provider Findings

For this sample, Center providers reported serving an average of 59 children in their program; programs participating in BrightStars reporting a higher average enrollment than Center providers not participating in BrightStars (40 children vs. 27 children respectively). Center providers with a capacity of 50-99 children and those with capacity of 150+ children reported enrollments lower than the lower range bounds for their size type.

FIGURE 2. AVERAGE ENROLLMENT BY CENTER PROGRAM CAPACITY



The following table outlines the average number of classrooms and the average maximum number of children currently attending in the classroom. Programs with a capacity of less than 49 children reported a higher average maximum count of preschool age children attending at one time than programs with larger capacities. Programs licensed for larger capacities reported a higher average maximum of school-age children in attendance at one time than smaller programs.

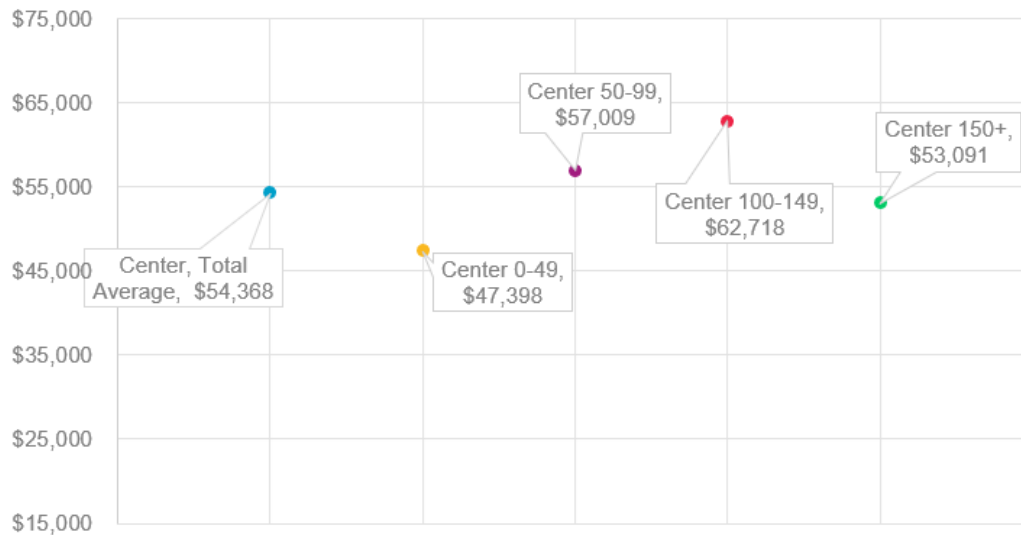
FIGURE 3. AVERAGE NUMBER OF CLASSROOMS AND AVERAGE MAXIMUM OF ATTENDEES AT ONE TIME

Program Capacity	Average Number of Classrooms				Average of Maximum number of children currently attending in classroom			
	Infant (Birth to 18 mos)	Toddler (18 to 36 mos)	Preschool (3 to 5 years)	School-age (Kindergarten or above)	Infant (Birth to 18 mos)	Toddler (18 to 36 mos)	Preschool (3 to 5 years)	School-age (Kindergarten or above)
N	40	58	77	50	37	53	73	45
0-49	0.5	0.6	1.3	0.4	4.3	7.0	16.6	9.3
50-99	1.3	1.5	2.1	1.3	6.0	7.4	13.1	13.0
100-149	1.4	1.4	3.4	3.7	5.3	8.0	11.5	15.4
150+	1.4	1.4	3.4	3.7	5.3	8.0	11.5	15.4

## Wages and Compensation

Responses indicate centers have an average of less than two Center directors per program. Center directors are reported an average annual salary of \$54,368. The averages range from \$47,398 annually to \$57,009 annually, pending the program size. The chart below shows the average annual salary for Directors based on program size.

**CHART 4 AVERAGE OF TOTAL ANNUAL DIRECTOR SALARY BY PROGRAM CAPACITY SIZE**



Additional annual positions reported include administrators and education coordinators. Responses show programs have an average of less than 3 program administrators with average annual salaries ranging from \$20,431 to \$37,440, pending program size, with an overall average of \$24,020 annually across all program sizes.

Responses show centers have an average of less than 2 education coordinators on staff with annual salaries ranging from \$28,816 to \$38,151 pending program size, with an overall average of \$33,693 annual salary across all program sizes.

Participants also indicated their highest and lowest hourly wages for Lead Teachers, Assistant Teachers, Additional Staff, and Substitutes. Lead Teachers have the highest average hourly wages and have the largest gap (\$2.73) between their highest and lowest average hourly wage. Substitutes have the smallest gap (\$0.29) between their highest and lowest average hourly wage.

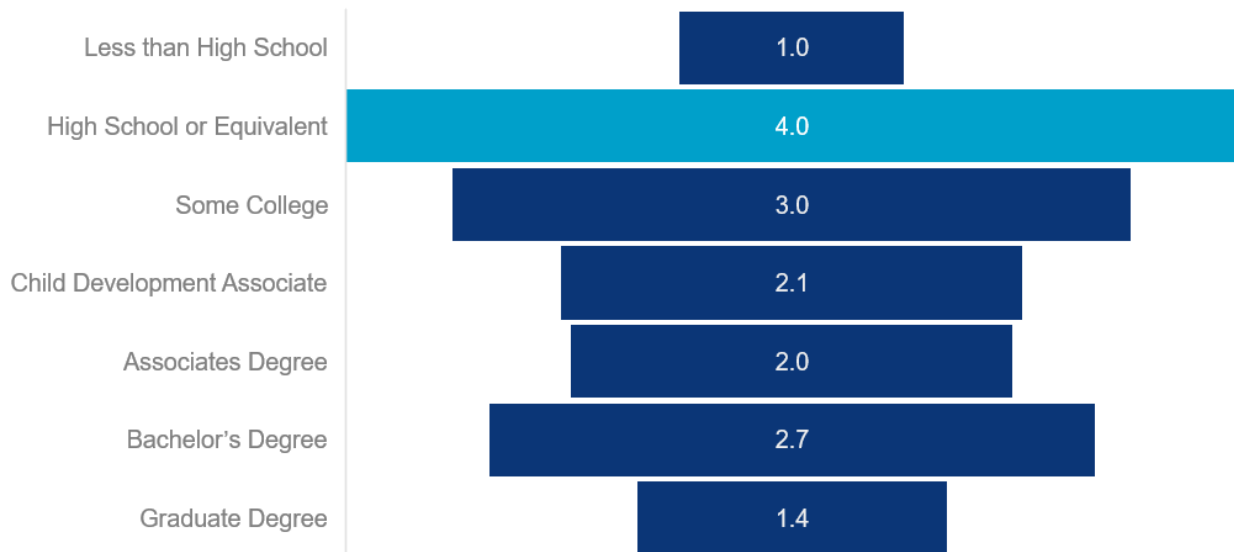
**TABLE 55 CENTERS- HIGHEST AND LOWEST AVERAGE HOURLY WAGE BY POSITION**

Position	Highest Average Hourly Wage	Lowest Average Hourly Wage	Difference
Lead Teacher	\$17.42	\$14.69	\$2.73
Assistant Teacher	\$14.07	\$12.47	\$1.60
Additional Staff	\$15.13	\$12.61	\$2.52
Substitute	\$12.90	\$12.61	\$0.29

## Education

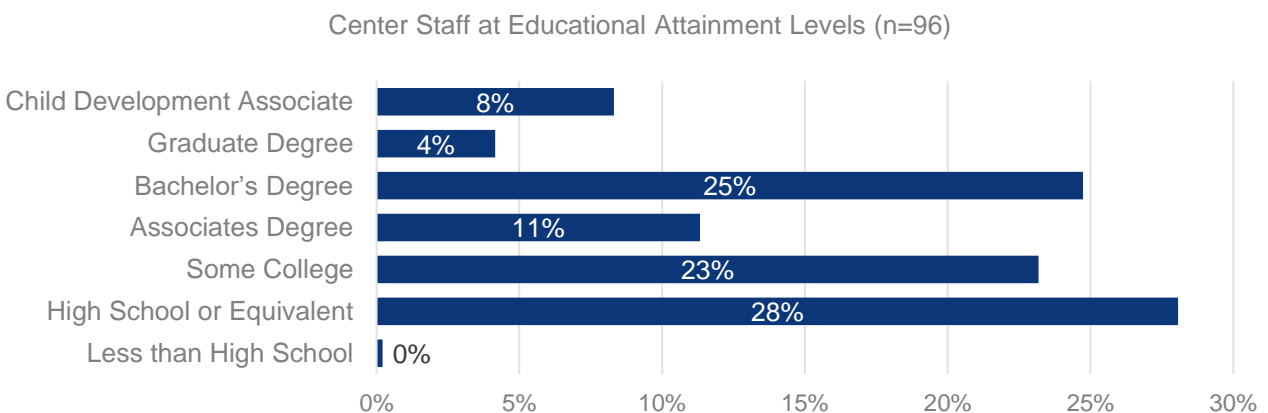
The typical center has an average of 10 total staff members; this ranges by program capacity from 5 staff for programs with a capacity of less than 49 children to 20 staff in programs with capacities of more than 150 children. Providers were asked to report staff education attainment. The sample indicates most center staff have a high school diploma or equivalent. The chart below shows the average number of staff within each education level. The lowest rate of center-based staff education level is those with less than a high school diploma.

**FIGURE 4. AVERAGE NUMBER OF STAFF PER EDUCATION ATTAINMENT LEVEL**



While 'High School or Equivalent' was the most common educational attainment, overall 25 percent of Center staff hold a Bachelor's Degree.

**FIGURE 5. PERCENT OF CENTER-BASED STAFF AT EDUCATIONAL ATTAINMENT LEVELS**



## Response to Increased Minimum Wage

Providers were asked if they would need to make any programmatic adjustments to their business if the event of a state or federal minimum wage increase to \$15 per hour. Overall, 78 percent of providers responded "Yes" (n=161). Of the 103 Centers respondents, 83 percent of Centers indicated "Yes" (n=103).

When asked to identify the programmatic adjustments, the most frequently cited overall Centers responses were:

1. Increase private pay tuition rates (96 percent)

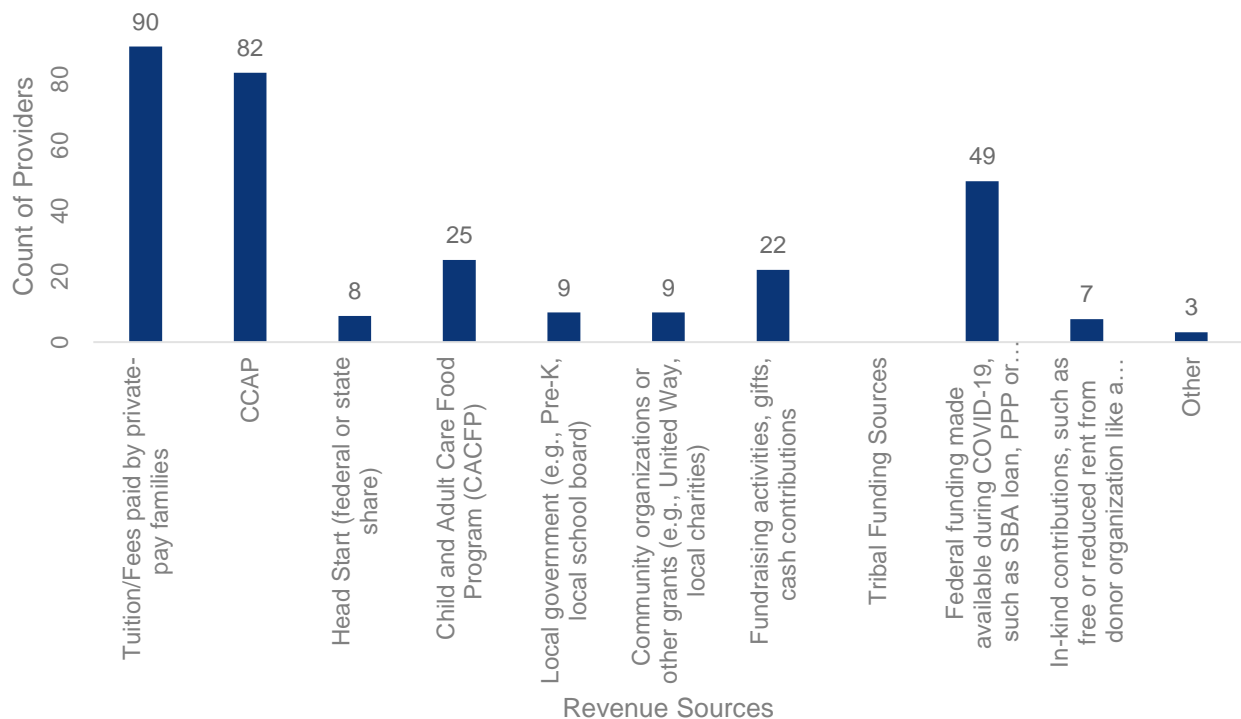
2. Apply for alternative forms of revenue, such as grants of community investments (61 percent)
3. Reduce current staff hours (38 percent)

These top 3 most frequently cited programmatic adjustments were consistent for small programs (capacity 0-49, 50-99). Larger programs (capacity 100-149, 150+) also shared responses 1 and 2 above, but varied in their 3<sup>rd</sup> response. For programs with capacity 100-149, their 3<sup>rd</sup> most frequently cited response was “Increase CCAP Participation. While only 5 providers with a capacity of 150+ responded to this question, none selected “Reducing current staff hours” as a strategy.

## Revenue and Expenses

Center providers reported receiving revenue from numerous sources, most in particular came from tuition from private pay only families (90) and CCAP (82). The next highest count of revenue sources came from COVID-19 federal funding that came in the form of grants, PPP loans, and similar vehicles.

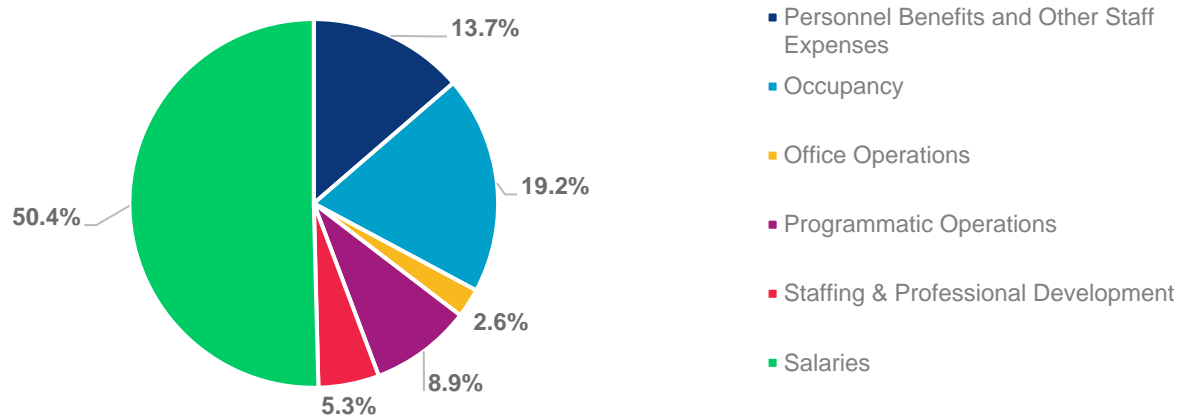
FIGURE 6. COUNT OF REVENUE SOURCES FOR CENTER PROVIDERS



According to the average annual expenses reported in the Cost of Care survey, personnel salaries accounted for 50 percent of total expenses for a Center-based program (64 percent including benefits and accompanying expenses). The remaining expenses are grouped by occupancy at 19 percent (such as rent and utilities); programmatic operations at 9 percent (such as curriculum, supplies and equipment); staffing and professional development at 5 percent (such as training and consultants); and office operations at 3 percent. The below chart illustrates these data:



FIGURE 7. AVERAGE ANNUAL EXPENSES BY CATEGORY FOR CENTER PROVIDERS



In greater detail, we collected the component line items that make up the above groupings. These individual components are, again, average annual costs reported on the Cost of Care survey.

TABLE 56. AVERAGE ANNUAL COSTS FOR CENTER PROGRAMS

	Budget Line Item	N	Average Annual \$	% of Total
Personnel Benefits and Other Staff Expenses	Employer's share of Social Security and Medicare Tax	51	\$25,151	5.7%
	Unemployment Tax	44	\$16,860	3.8%
	Worker's Compensation Annual INSURANCE Premium	62	\$4,035	0.9%
	Employer's share of: Health, Dental, Disability, Life and other insurance	34	\$34,498	7.8%
Occupancy	Building Insurance	35	\$9,078	2.1%
	Fees/Permits	61	\$1,534	0.3%
	Insurance (liability, accident, etc.)	49	\$5,463	1.2%
	Maintenance/Repair/Cleaning	48	\$15,158	3.4%
	Utilities (Electric, gas, water/sewer, etc.)	44	\$11,705	2.7%
	Rent /Lease	44	\$51,752	11.7%
	Telephone & Internet	65	\$2,774	0.6%
	Taxes (including real estate, vehicle, etc.)	30	\$9,424	2.1%
	Miscellaneous: Occupancy	26	\$6,011	1.4%
Office Operations	Audit/Bookkeeping	35	\$5,694	1.3%
	Computers and other technological equipment	37	\$2,730	0.6%
	Miscellaneous: Office Operations	46	\$5,383	1.2%
	Printing and Postage	26	\$1,280	0.3%
Programmatic Operations	Advertising	37	\$1,806	0.4%
	Child assessment system	17	\$1,235	0.3%
	Curriculum	19	\$2,187	0.5%
	Supplies & Equipment	55	\$11,627	2.6%
	Food & Food Prep	46	\$19,539	4.4%
	Vehicle Expenses (Including Mileage and Insurance)	22	\$6,734	1.5%
	Miscellaneous: Programmatic Operations	16	\$9,222	2.1%

	Budget Line Item	N	Average Annual \$	% of Total
Staffing & Professional Development	Consultants/Training	34	\$2,330	0.5%
	Miscellaneous: Staffing and Professional Development	15	\$29,099	6.6%
Total	Average of Total Fixed Costs (non-salary)		\$152,363	34.5%
	Average of Total Salaries Combined		\$297,050	67.3%
	Average of Total Annual Costs		\$441,211	100.0%

It is important to note in the calculations above, submission of these expense costs were optional for providers; a single provider may not have entered a cost for each line item or spending categories. When calculating the average cost per line item expense, the average was taken using the N value. When calculating the average of the Total Annual Cost, costs were summed by provider to calculate a cost per provider. Where the provider did report any Total Staffing Expenses or any Total Fixed Cost Expenses, the lack of data was 'filled in' with the average cost (by provider type) for that Total Expense category, to prevent a provider's lack of response from creating an artificially low total average.

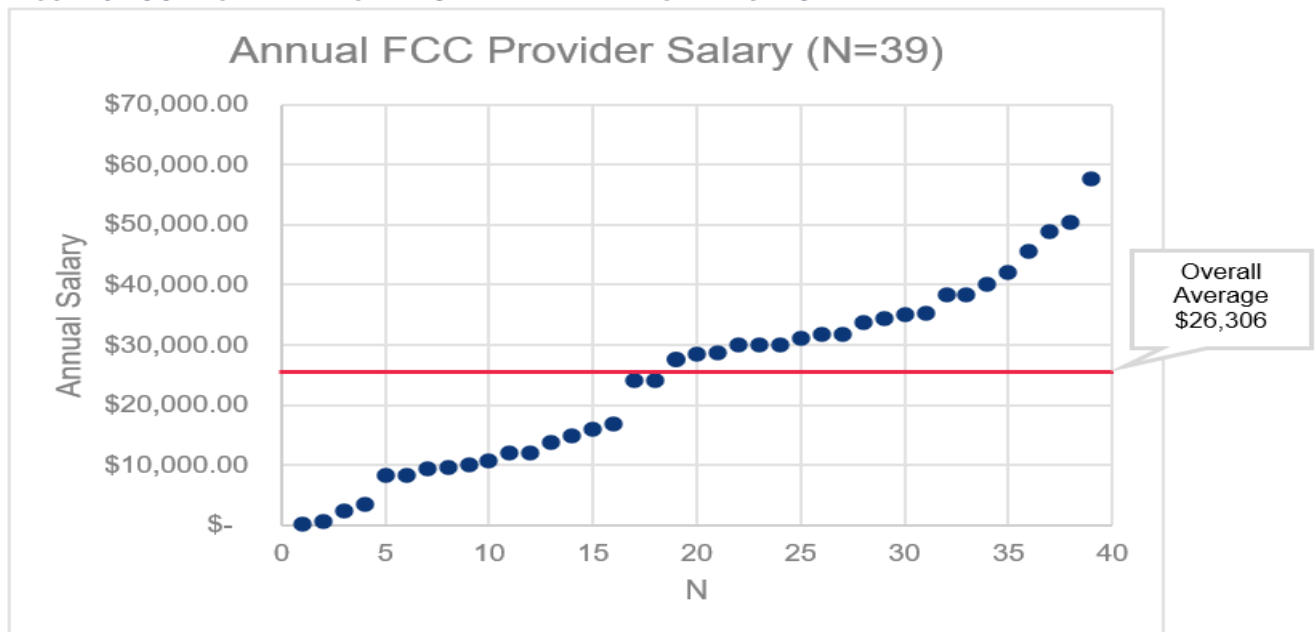
## Group/Family Child Care Home Findings

FCC programs were asked to report the typical number of children attending their program at one time. On average, FCC providers (n=58) reported 5.2 children attending. The average was comparable between FCCs who participated in BrightStars and those who did not (5.2 vs. 5.0 respectively).

## Wages and Compensation

Of the small sample (n=39), the average salary for FCC providers is **\$26,306.55**. The highest reported annual salary is \$57,600.

**FIGURE 8 FCC PROVIDER REPORTED SALARY AND AVERAGE ANNUAL SALARY**



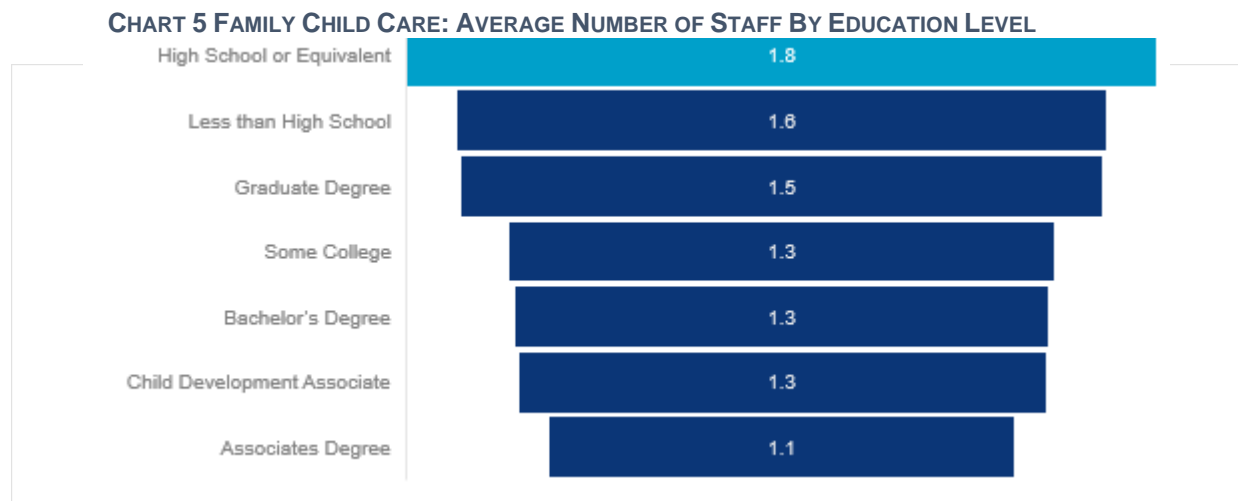
## Education

Most commonly, FCC providers reported their personal educational attainment is a high school diploma or equivalent (34 percent). The majority of FCC providers (a total of 54 percent) report having some type of college experience, including 'Some College', an Associate's Degree, a Bachelor's Degree, or a Graduate Degree.

FIGURE 9. EDUCATIONAL ATTAINMENT BY FCC PROVIDER

Educational Attainment	Total	
	Count	Percent
N=59		
Less than High School	1	2%
High School or Equivalent	20	34%
Some College	14	24%
Associates Degree	10	17%
Bachelor's Degree	5	8%
Graduate Degree	3	5%
Child Development Associate (CDA)	6	10%
<b>Total</b>	<b>59</b>	<b>100%</b>

FCC providers reported an average of 3.6 staff working within their program; this includes assistants, emergency assistants, and consultants. When asked to report on the level of education attained by staff, the sample indicates most FCC program staff have a high school diploma or equivalent. The chart below shows the average number of staff within each education level. The lowest rate of family child care staff education level is those with an associate's degree.



## Response to Increased Minimum Wage

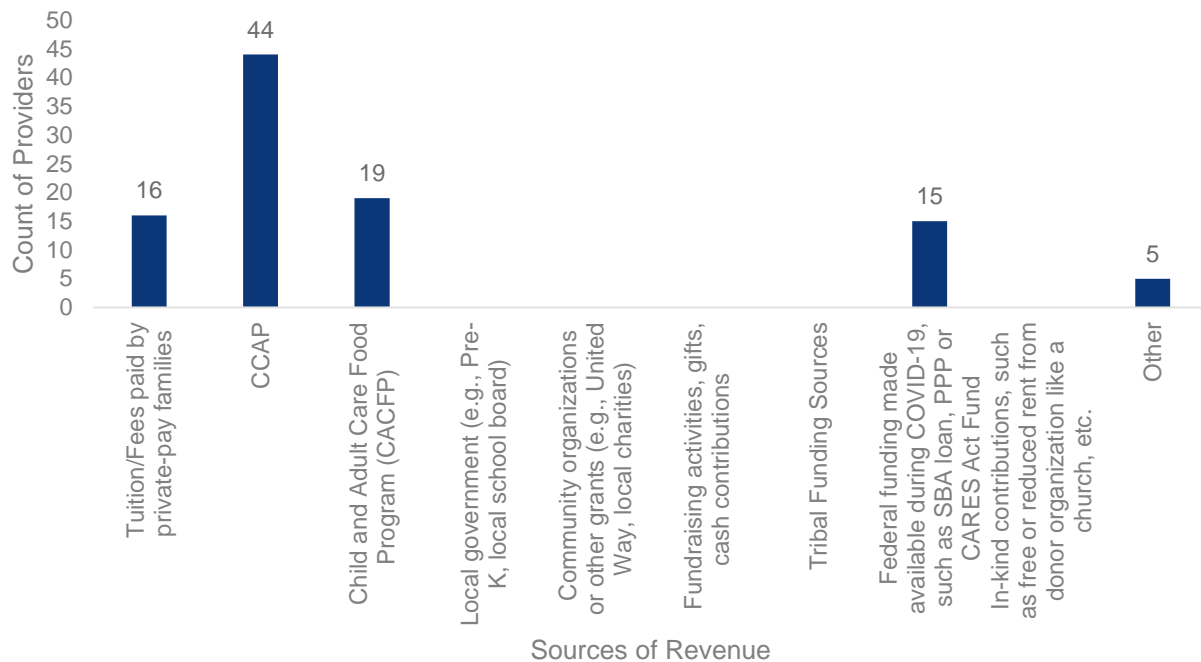
Fifty-eight FCC providers responded to the question asking if they anticipated making programmatic changes in the event a state or federal minimum wage is raised to \$15/hour; 70 percent responded "Yes". Among FCC providers, the most common programmatic adjustments include:

1. Increase private pay tuition rates (68 percent)
2. Increase CCAP participation (58 percent)
3. Apply for alternative forms of revenue, such as grants or community investments (39 percent)

## Revenue and Expenses

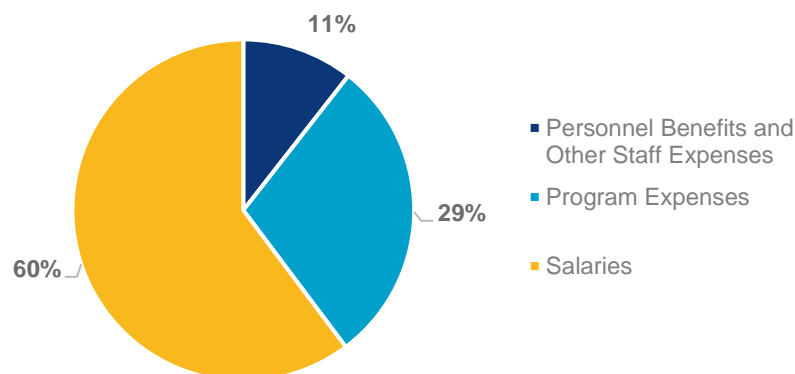
The dominant revenue source for FCC providers reported in the Cost of Care survey came from CCAP (44), followed by CACFP (19), private pay children (16), and federal funding from COVID-19 supports (15).

**FIGURE 10. COUNT OF REVENUE SOURCES FOR FCC PROVIDERS**



According to average annual expenses reported in the Cost of Care survey, personnel salaries accounted for 60 percent of expenses for a FCC provider (71 percent including benefits). The remaining programmatic expenses for running the program (rent, supplies, etc.) accounted for 29 percent of program expenses.

**FIGURE 11. FAMILY CHILD CARE PROGRAM EXPENSES**



In greater detail, we collected the component line items that make up the above groupings. These individual components are, again, average annual costs reported on the Cost of Care survey.

TABLE 57. FCC PROVIDER AVERAGE COSTS

	Budget Line Item	N	Average Annual \$	% of Total
Personnel Benefits and Other Staff Expenses	Employer's share of Social Security and Medicare Tax	12	\$4,151	5.5%
	Unemployment Tax	9	\$3,348	4.4%
	Worker's Compensation Annual Insurance Premium	7	\$443	0.6%
	Employer's share of: Health, Dental, Disability, Life and other insurance	3	\$1,272	1.7%
Program Expenses	Accounting & Legal	20	\$2,353	3.1%
	Allowance for Bad Debt and Vacancy	5	\$4,680	6.2%
	Cleaning or Maintenance Fees	37	\$5,021	6.6%
	Debt Service	7	\$9,257	12.2%
	Insurance (liability or similar)	39	\$2,430	3.2%
	Rent/Mortgage (specifically the portion your program pays for)	42	\$15,467	20.4%
	Repairs to Program Equipment	30	\$1,831	2.4%
	Taxes (including real estate, vehicle, etc.)	30	\$8,464	11.2%
	Training & Professional Development	17	\$1,678	2.2%
	Utilities (power, water, telephone, etc.)	48	\$8,754	11.6%
	Supplies (food, office, educational, etc.)	50	\$10,393	13.7%
	Other, please specify in the next box	22	\$9,121	12.1%
Total	Total Fixed Costs (non-salary)		\$25,484	33.7%
	Total Salaries Combined		\$52,573	69.5%
	Total Annual Costs		\$75,653	100.0%

It is important to note in the calculations above, submission of these expense costs were optional for providers; a single provider may not have entered a cost for each line item or spending category. When calculating the average cost per line item expense, the average was taken using the N value. When calculating the average of the Total Annual Cost, costs were summed by provider to calculate a cost per provider. Where the provider did report any Total Staffing Expenses or any Total Fixed Cost Expenses, the lack of data was 'filled in' with the average cost (by provider type) for that Total Expense category, to prevent a provider's lack of response from creating an artificially low total average.

## Appendix A. Survey Instrument

### Rhode Island 2021 Child Care Market Rate Survey

*\*If you are unable to submit a response on the web portal, you may contact [RIDHSSurvey@pcgus.com](mailto:RIDHSSurvey@pcgus.com) or take it over the phone at 833-930-3538.*

Thank you for participating in the 2021 Rhode Island Department of Human Services (DHS) Market Rate Survey. This survey asks questions about your program, children you serve, and gathers rates paid for services. It also asks about your program's early childhood care and education services by type of care and geography. This information will help DHS understand the landscape and accessibility of early childhood care and education across the state. DHS is federally required by the Administration for Children & Families to conduct a Market Rate Survey every three years to determine the costs associated with delivering child care.

Your participation in this survey is critical, as it will help to establish the CCAP reimbursement rates across all age categories. Understanding the "market rate," or true cost of care for delivering child care services helps leaders in state government to better define and advocate for appropriate and accurate CCAP reimbursement rates.

We will treat your responses as confidential information and will only share summary information. Any reports resulting from the survey will not include your name or the name of your business. Your choice to take part will not affect your ability to provide subsidized child care. To complete the survey, you will likely need to have your bookkeeping and payroll information at the ready.

Upon completing the survey, you will have the chance to win one of four \$50 VISA gift card!

After you complete the survey, be sure to click the link on the final screen to fill in additional information and be entered to win an additional \$50 gift card!

*Please note: if you are a program with multiple locations or sites, we ask that you complete a survey for each individually licensed program.*

---

### Encuesta sobre los Precios de Mercado del Cuidado Infantil de 2021 de Rhode Island

*\*Si no puede enviar la respuesta en el portal web, póngase en contacto con [RIDHSSurvey@pcgus.com](mailto:RIDHSSurvey@pcgus.com) o tómelala por teléfono al 833-930-3538.*

*Gracias por participar en la Encuesta sobre los Precios de Mercado del Cuidado Infantil de 2021 de Rhode Island Department of Human Services (DHS). Esta encuesta hace preguntas sobre su programa, los niños que atiende, y reúne las tasas pagadas por las familias y las tasas de mercado. También le pregunta sobre los servicios de cuidado y educación temprana de su programa por tipo de cuidado y geografía. Esta información ayudará al DHS a entender el panorama y el acceso que hay a los servicios de cuidado y educación temprana en todo el Estado. Cada tres años, la Administration for Children & Families exige que el DHS haga una Encuesta sobre las Tarifas de Mercado del Cuidado Infantil para determinar los costos asociados con los servicios de cuidado infantil.*

Su participación en esta encuesta es clave, puesto que ayudará a establecer las tarifas de reembolso del CCAP en todas las categorías de edad. Entender la "tarifa de mercado", o el costo real de los cuidados para ofrecer servicios de cuidado infantil, ayuda a los líderes gubernamentales de cada estado a definir de una mejor manera las tarifas de reembolso del CCAP y a luchar para que sean más apropiadas y precisas.

Trataremos sus respuestas como información confidencial y solo compartiremos información resumida. Todos los informes que se obtengan a partir de la encuesta no incluirán ni su nombre ni el nombre de su empresa. Su participación en la encuesta no implicará cambio alguno en su servicio de cuidado infantil subsidiado. Para facilitar la encuesta, le recomendamos que tenga a mano su información de contabilidad y nómina.

Si completa la encuesta en su totalidad, ¡tendrá la oportunidad de ganar una de cuatro tarjetas de regalo de \$50.

Después de completar la encuesta de tasas de mercado, asegúrese de hacer clic en el enlace en la pantalla final para completar información adicional sobre el Costo de la atención y tendrá la oportunidad de ganar una tarjeta de regalo adicional de \$50.

*Tenga en cuenta: si usted es un programa que tiene múltiples ubicaciones o sitios, le pedimos que complete una encuesta para cada programa que tenga una licencia individual.*

## Introduction

### Logic: All Providers

- 1) Please select your preferred language for completing this survey.  
*Por favor seleccione el idioma que prefiera para completar esta encuesta.\**
- ☐ English  
☐ Español

### Logic: All Providers

- 2) Please enter your provider Licensing ID\*. This ID is located on the bottom left of your DHS Child Care License.  
*Por favor escriba el ID de su licencia de proveedor. Ese ID se encuentra a la izquierda de la parte inferior de su Licencia de Cuidado Infantil del DHS.\**

### Logic: All Providers

- 3) Please select your program type.  
*Por favor seleccione su tipo de programa.\**
- ☐ CENTER-Based - CENTRO  
☐ FAMILY Child Care Home – HOGAR de Cuidado Infantil Familiar

## Enrollment

**Logic: Hidden unless: #3 Question "Please select your program type" is one of the following answers ("Center-based")**

- 4) How many children do you currently have enrolled in your program and how many children you want to serve? (Note: Enrolled children are considered children registered to participate in the program. This number does not assume attendance.) *¿Actualmente, cuántos niños están inscritos en su programa por grupo de edades y a cuántos niños más desea prestarle servicios? (Nota: los niños inscritos se consideran niños registrados para participar en el programa. Este número no asume la asistencia).*

	Currently Enrolled: Private Pay <i>Actualmente inscrito: Pago Privado</i>	Currently Enrolled: CCAP <i>Actualmente inscrito: Subsidio CCAP</i>	Currently Enrolled: RI State PreK <i>Actualmente inscrito: RI Preescolar estatal</i>	Currently Enrolled: Head Start, Early Head Start) <i>Actualmente inscrito: Head Start y Early Head Start</i>	How many do you want to serve? <i>¿Cuántos quieres servir?</i>
Infant (Birth to 18 mos) <i>Infante: Desde el nacimiento hasta los 18 meses</i>					
Toddler (18 to 36 mos) <i>Niños pequeños: De 18 meses a 36 meses</i>					
Preschool (3 to 5 years) <i>Preescolar: De 3 años a 5 años</i>					

	Currently Enrolled: Private Pay <i>Actualmente inscrito: Pago Privado</i>	Currently Enrolled: CCAP <i>Actualmente inscrito: Subsidio CCAP</i>	Currently Enrolled: RI State PreK <i>Actualmente inscrito: RI Preescolar estatal</i>	Currently Enrolled: Head Start, Early Head Start) <i>Actualmente inscrito: Head Start y Early Head Start</i>	How many do you want to serve? <i>¿Cuántos quieres servir?</i>
School-age (Kindergarten or above): Before/After School Only <i>Edad escolar: (En jardín de infantes o superior): Antes/después de la escuela</i>					
School-age (Kindergarten or above): Full Day <i>Edad escolar: (En jardín de infantes o superior): jornada completa</i>					

**Logic: Hidden unless: #3 Question "Please select your program type" is one of the following answers ("Family Child Care Home")**

5) How many children do you currently have enrolled in your program and how many children you want to serve? (Note: Enrolled children are considered children registered to participate in the program. This number does not assume attendance.) *¿Actualmente, cuántos niños están inscritos a su programa por grupo de edades y a cuántos niños más desea prestarle servicios? (Nota: los niños inscritos se consideran niños registrados para participar en el programa. Este número no asume la asistencia).*

	Currently Enrolled: Private Pay <i>Actualmente inscrito: Pago Privado</i>	Currently Enrolled: CCAP <i>Actualmente inscrito: Subsidio CCAP</i>	How many do you want to serve? <i>¿Cuántos quieres servir?</i>
Infant (Birth to 18 mos) <i>Infante: Desde el nacimiento hasta los 18 meses</i>			
Toddler (18 to 36 mos) <i>Niños pequeños: De 18 meses a 36 meses</i>			
Preschool (3 to 5 years) <i>Preescolar: De 3 años a 5 años</i>			
School-age (Kindergarten or above): Before/After School Only <i>Edad escolar: (En jardín de infantes o superior): Antes/después de la escuela</i>			
School-age (Kindergarten or above): Full Day <i>Edad escolar: (En jardín de infantes o superior): jornada completa</i>			

### Program Fees and Rates

**Logic: All Providers**

6) For which age groups do you provide child care services? Check all that apply. *¿Para qué grupos de edad brindan servicios de cuidado infantil? Marque todos los que correspondan.*

( ) Infants (Birth- 18 months old) *Infante: Desde el nacimiento hasta los 18 meses*

( ) Toddlers (18 to 36 months) *Niños pequeños: De 18 meses a 36 meses*

( ) Preschool (3- 5 years old, not in Kindergarten) *Preescolar: De 3 años a 5 años, no asisten al jardín de infantes*



( ) School-age (In Kindergarten or above) *Edad escolar: En jardín de infantes o superior*

**Logic: All Providers**

7) Do you offer any of the following non-traditional hour schedules? *¿Ofrecen alguno de los siguientes horarios no tradicionales?*

- ( ) Weekend care *Cuidado de fin de semana*
- ( ) Evening care (until 12am) *Cuidado de noche (hasta las 12 AM)*
- ( ) Overnight care *Cuidado durante la noche*
- ( ) Other, please specify: *Otros (especificar)*
- ( ) None *Ninguno*

**Logic: Hidden unless: #6 Question "For which age groups do you provide child care services?" is one of the following answers ("Infants")**

The following set of questions will ask you to provide the highest tuition rates for each category of hours. We recognize that most RI child care providers capture enrollment by the number of days per week a child is attending. Due to the structure of RI's CCAP reimbursement rate schedule, we are asking providers to report on hours, not days, a child is in care. For example, if your program has a 3 day weekly rate, and the daily rate allows for a maximum of 8 hours a day. The 3 day week rate would be for 24 hours (3 days x 8 hours/day= 24). This rate would be reported in the table below in the category 20-29 hours.

*En el siguiente grupo de preguntas, deberá responder con las tarifas de cuidado más altas para cada categoría horaria. Sabemos que la mayoría de los proveedores de cuidado infantil en Rhode Island registran la inscripción por la cantidad de días por semana en que asisten los niños/as. Debido a la estructura del cronograma de tarifas de reembolso del CCAP de Rhode Island, les pedimos a los proveedores de servicios que nos informen las horas, no los días, en que los niños/as reciben cuidado. Por ejemplo, si su programa cuenta con una tarifa semanal para 3 días y la tarifa diaria permite un máximo de 8 horas diarias; la semana de 3 días tendrá en total 24 horas (3 días x 8 horas/día = 24). Esta tarifa se informará en la tabla que aparece debajo dentro de la categoría de 20 a 29 horas.*

8) Please provide the highest rates for each category of hours you charge to private paying families, even if you do not currently care for any private-pay children. Do not include discounts, CCAP subsidies, sliding-scale rates, additional family fees or scholarships. If you do not offer the schedule listed, please enter "X."

*En cada categoría horaria, indique las tarifas más altas que cobra a familias particulares que pagan directamente, incluso si en este momento no cuida a ningún niño/a de familia particular. No incluya descuentos, subsidios del CCAP, escalas variables de precios, tarifas familiares adicionales o becas escolares. Si no ofrece el servicio mencionado, márquelo con una "X".*

INFANTS (Birth to 18 mos.) <i>Infante: Desde el nacimiento hasta los 18 meses</i>	Rate <i>Tarifa</i>	Frequency Charged (Drop down: Hourly, Daily, Weekly, Monthly, Annually) <i>Frecuencia (Por hora, Por día, Por Semana, Por mes, anualmente)</i>
30+ hours per week <i>30+ horas por semana</i>		
20-29 hours per week <i>20-29 horas por semana</i>		
10-19 hours per week <i>10-19 horas por semana</i>		
0-9 hours per week <i>0-9 horas por semana</i>		

**Logic: Hidden unless: #6 Question "For which age groups do you provide child care services?" is one of the following answers ("Toddlers")**

9) Please provide the highest rates for each category of hours you charge to private paying families, even if you do not currently care for any private-pay children. Do not include discounts, CCAP subsidies, sliding-scale rates, additional family fees or scholarships. If you do not offer the schedule listed, please enter "X."

En cada categoría horaria, indique las tarifas más altas que cobra a familias particulares que pagan directamente, incluso si en este momento no cuida a ningún niño/a de familia particular. No incluya descuentos, subsidios del CCAP, escalas variables de precios, tarifas familiares adicionales o becas escolares. Si no ofrece el servicio mencionado, márquelo con una "X".

TODDLERS (18-36 months old) <i>Niños pequeños: De 18 meses a 36 meses</i>	Rate <i>Tarifa</i>	Frequency Charged (Drop down: Hourly, Daily, Weekly, Monthly, Annually) <i>Frecuencia (Por hora, Por día, Por Semana, Por mes, anualmente)</i>
30+ hours per week <i>30+ horas por semana</i>		
20-29 hours per week <i>20-29 horas por semana</i>		
10-19 hours per week <i>10-19 horas por semana</i>		
0-9 hours per week <i>0-9 horas por semana</i>		

Logic: Hidden unless: #6 Question "For which age groups do you provide child care services?" is one of the following answers ("Preschool")

10) Please provide the highest rates for each category of hours you charge to private paying families, even if you do not currently care for any private-pay children. Do not include discounts, CCAP subsidies, sliding-scale rates, additional family fees or scholarships. If you do not offer the schedule listed, please enter "X."

En cada categoría horaria, indique las tarifas más altas que cobra a familias particulares que pagan directamente, incluso si en este momento no cuida a ningún niño/a de familia particular. No incluya descuentos, subsidios del CCAP, escalas variables de precios, tarifas familiares adicionales o becas escolares. Si no ofrece el servicio mencionado, márquelo con una "X".

PRESCHOOL (3-5 years old, not in Kindergarten) <i>Preescolar: De 3 años a 5 años, no asistir al jardín de infantes</i>	Rate <i>Tarifa</i>	Frequency Charged (Drop down: Hourly, Daily, Weekly, Monthly, Annually) <i>Frecuencia (Por hora, Por día, Por Semana, Por mes, anualmente)</i>
30+ hours per week <i>30+ horas por semana</i>		
20-29 hours per week <i>20-29 horas por semana</i>		
10-19 hours per week <i>10-19 horas por semana</i>		
0-9 hours per week <i>0-9 horas por semana</i>		

Logic: Hidden unless: #6 Question "For which age groups do you provide child care services?" is one of the following answers ("School-age")

11) Please provide the highest rates for each category of hours you charge to private paying families, even if you do not currently care for any private-pay children. Do not include discounts, CCAP subsidies, sliding-scale rates, additional family fees or scholarships. If you do not offer the schedule listed, please enter "X."

En cada categoría horaria, indique las tarifas más altas que cobra a familias particulares que pagan directamente, incluso si en este momento no cuida a ningún niño/a de familia particular. No incluya descuentos, subsidios del CCAP, escalas variables de precios, tarifas familiares adicionales o becas escolares. Si no ofrece el servicio mencionado, márquelo con una "X".

SCHOOL-AGE (5 + years old, in Kindergarten/School) <i>Edad escolar: (5 años+, En jardín de infantes o superior)</i>	30+ hours per week <i>30+ horas por semana</i>	20-29 hours per week <i>20-29 horas por semana</i>	10-19 hours per week <i>10-19 horas por semana</i>	0-9 hours per week <i>0-9 horas por semana</i>	Frequency Charged (Drop down: Hourly, Daily, Weekly, Monthly, Annually) <i>Frecuencia (Por hora, Por día, Por Semana, Por mes, anualmente)</i>
Before School Only <i>Solo antes de la escuela</i>					
After School Only <i>Solo después de la escuela</i>					
Before and After School <i>Antes y después de la escuela</i>					
Summer Vacation/ Camp <i>Vacaciones de verano/ Acampar</i>					
Full Day (During COVID) <i>Día completo (durante COVID)</i>					

Logic: Hidden unless: #6 Question "Do you offer any of the following non-traditional hour schedules?" If any answer except "None" is selected.

12) Non-Traditional Rates. Please provide the weekly rate you charge to private paying families, even if you do not currently care for any private-pay children. Do not include discounts, CCAP subsidies, sliding-scale rates, additional family fees or scholarships. If you do not offer the schedule listed, please enter "X."

*Tarifas no tradicionales. Indique las tarifas semanales más altas que cobra a familias particulares que pagan directamente, incluso si en este momento no cuida a ningún niño/a de familia particular. No incluya descuentos, subsidios del CCAP, escalas variables de precios, tarifas familiares adicionales o becas escolares. Si no ofrece el servicio mencionado, márkelo con una "X".*

	Evening Care <i>Cuidado de noche</i>	Overnight Care <i>Cuidado durante la noche</i>	Weekend Care <i>Cuidado de fin de semana</i>
Weekly Rate <i>Tarifa semanal</i>			
Number of Hours covered by this rate <i>Cantidad de horas cubiertas por esta tarifa</i>			
Frequency Charged (Drop down: Hourly, Daily, Weekly, Monthly, Annually) <i>Frecuencia de Cobro: Por Hora, Diario, Semanal, Mensual, Anual)</i>			
Count of children receiving these services weekly <i>Conteo de niños/as que reciben estos servicios semanalmente</i>			

**Logic: All Providers**

13) Due to COVID-19, how have you adjusted your full-time rates for each age category?

*Ante la pandemia del COVID-19, ¿cómo ajustó sus tarifas a tiempo completo para cada categoría de edad?*

Age Category <i>Edad</i>	Adjustment (Drop-Down Options: No Change, Increased Rate, Decreased Rate) <i>Ajustamiento (Sin cambios, tarifa aumentada, tarifa disminuida)</i>
Infant (Birth to 18 mos) <i>Infante: Desde el nacimiento hasta los 18 meses</i>	
Toddler (18 to 36 mos) <i>Niños pequeños: De 18 meses a 36 meses</i>	
Preschool (3 to 5 years) <i>Preescolar: De 3 años a 5 años</i>	
School-age: Before and/or After School Only (5 years +) <i>Edad escolar: Solo antes y / o después de la escuela (5 años+)</i>	
School-age: Full Day (5 years +) <i>Edad escolar: Día completo (5 años+)</i>	

**Logic: All Providers**

14) Given the rates noted above, do you charge an additional rate for the following? *Dadas las tarifas indicadas anteriormente, ¿cobra usted alguna tarifa adicional? (Seleccione todos los que correspondan).*

- ☐ Early Release days *Días de Salida Temprana*  
☐ Public School Closure days *Días de Cierre de la Escuela Pública*  
☐ Public School Vacation *Vacaciones de la Escuela Pública*  
☐ Summer Break *Receso de verano*  
☐ Other *Otro*

**Logic: All Providers**

15) If your program offers any of the following discounts, please complete the table below. *Si su programa ofrece alguno de los siguientes descuentos, complete la siguiente tabla.*

	Check if Yes <i>Marque si "Sí"</i>	Number of Children Currently Receiving Discount <i>Número de Niños que reciben actualmente descuento</i>	Comments <i>Comentario(s)</i>
Sliding Fee <i>Escala variable de precios</i>			
Low Income Rate <i>Tasa de bajos ingresos</i>			
Sibling Discount <i>Descuentos a hermanos</i>			
Student/Family Scholarship <i>Becas</i>			
Employee Discount <i>Descuentos a empleados</i>			
Vacation/Illness (child not attending)			

Vacaciones / enfermedad (niño no asistiendo)			
Other Otro			

**Logic: All Providers**

16) Do you charge any add-on fees in addition to your base rate? Select all that apply. ¿Cobra usted cargos adicionales a su tarifa completa? *Seleccione todos los que correspondan*

Fee	Check if Yes Marque si "Sí"	If Yes, how much? Si es así, ¿cuánto?
Registration Fee: One time only (e.g. upon initial enrollment) <i>Cuota de inscripción: solo una vez (por ejemplo, al momento de la inscripción inicial)</i>		
Registration Fee: Annual <i>Cuota de inscripción: (anual)</i>		
Application Fee <i>Arancel por inscripción</i>		
Transportation <i>Transporte</i>		
Food/Meals <i>Alimentos (comidas, meriendas)</i>		
Late Pick-up/Early Drop-off <i>Recogida tarde/ entrega temprana</i>		
Late Payment <i>Aranceles por pagos tardíos</i>		
Materials/Supplies <i>Aranceles por materiales/insumos</i>		
Extended day <i>Día extendido</i>		
Night Care <i>Cuidado de noche</i>		
Weekend Care <i>Cuidado de fin de semana</i>		
Event/Field Trip <i>Evento / viaje de campo</i>		
Waitlist Fee <i>Arancel por lista de espera</i>		
Hold Fee (i.e., fee to hold a current slot for families who have not returned during COVID-19, but would like to reserve their slot) <i>Tarifa de espera (ej. tarifa para mantener un espacio actual para las familias que no han regresado durante COVID-19, pero les gustaría reservar su espacio)</i>		
Deposit (i.e., to hold future slot) <i>Depósitos (ej. mantener el espacio vacante)</i>		
Enrichment/Special Activity Fee <i>Aranceles por actividades especiales</i>		
Optional Services <i>Servicios opcionales</i>		
Bank Fees (e.g., bounced check) <i>Comisiones bancarias (ej. cheques rechazados)</i>		
Other: <i>Otro</i>		

**Logic: All Providers**

17) Do you provide any of the following additional support services? Select all that apply and the per child cost for each. ¿Usted provee alguno de los siguientes servicios de apoyo? *Seleccione todos los que correspondan y el costo por niño para cada uno.*

Service	Offered? (Yes/No) <i>¿Ofrecido?</i> (Sí No)	Per Child Cost (to you as a Provider) <i>Costo por niño</i> (para usted como proveedor)	Source of Payment? (Dropdown: Fundraising, State/Federal Funding, Family Fees) <i>Fuente</i> (recaudación de fondos, financiación gubernamental, cuotas de los padres)
Behavior Supervision/Supports for children with challenging behaviors <i>Supervisión del comportamiento/Apoyos para niños con conductas desafiantes</i>			
Communication Supports to children who are non-verbal or have language delays <i>Apoyos de comunicación para niños que no son verbales o tienen retrasos lingüísticos</i>			
Diapering/Toileting Assistance for an older child <i>Asistencia con los pañales o hábitos sanitarios para niños mayores</i>			
Eating Assistance for a child who has food or texture sensitivities or physical challenges <i>Asistencia con las comidas para niños que presentan sensibilidad a algunos alimentos o texturas o problemas físicos</i>			
Health Monitoring for a child with a chronic medical condition <i>Monitoreo de la salud para niños con afecciones médicas crónicas</i>			
Medication Management- for a child requiring ongoing medication & maintain recordkeeping <i>Manejo de medicamentos para niños que requieren de medicación continua y mantenimiento de registros</i>			
Mobility Assistance to help a child with a wheelchair, crutches, or limited ability to walk <i>Asistencia motriz para ayudar a niños con silla de ruedas, muletas o capacidad limitada para caminar</i>			
Vision Supports and program changes to include a child with impaired vision <i>Asistencia motriz para ayudar a niños con silla de ruedas, muletas o capacidad limitada para caminar</i>			
Nursing Care – Access to a nurse for children requiring medical monitoring or intervention <i>Cuidados de enfermería: acceso a una enfermera para niños que requieren monitoreo o intervención médica</i>			
Physical Therapy - access for physical or occupational therapy services or providing activities to support child's therapy goals <i>Terapia física: acceso a servicios de terapia física u ocupacional o actividades para apoyar los objetivos de la terapia física del niño</i>			
Occupational therapy for a child with sensory processing challenges <i>Terapia ocupacional para niños con problemas de procesamiento sensorial</i>			
Other – Please explain: <i>Otro, por favor explique:</i>			

Logic: All Providers

18) What percentage of children served in your program are part of the following populations? (Drop down options: 0%, 1-25%, 26-50%, 51-75%, 75% or more, Unknown or we do not track) *¿Qué porcentaje de niños/as que participan en su programa son parte de los siguientes grupos?*

(0%, 1-25%, 26-50%, 51-75%, 75% o más, Desconocido o no rastreamos)

☐ Children with disabilities *Niños con discapacidades*

☐ Children experiencing homelessness *Niños sin hogar*

☐ Children who speak English as a second language *Niños que hablan inglés como segundo idioma*

☐ Children involved in the foster care system *Niños en el sistema de cuidados adoptivos*

**Logic: All Providers**

19) How would you like to enter your program's operating hours? *¿Cómo le gustaría ingresar el horario de funcionamiento de su programa?*

☐ Standard Hours (Enter hours once and select days open) *Horario Operativo Estándar (Ingrese las horas una vez y seleccione los días abiertos)*

☐ Non-Standard Hours (Enter the open/close time for each day of the week) *Horario Operativo No-Estandar, varía según el día (Ingrese la hora de apertura / cierre para cada día de la semana)*

**Logic: Hidden unless: #19 Question "How would you like to enter your program's operating hours?" If any answer except "Standard Hours" is selected.**

20) What are your program's standard operating hours? Note: For school-age programs, this is your full day/summer hours. *¿Cuáles son los horarios operativos estándar de su programa? Nota: Para los programas de edad escolar, este es su horario de jornada completa/verano.*

Standard Operating Hours	
Open <i>Apertura</i>	
Close <i>Cierre</i>	

**Logic: Hidden unless: #19 Question "How would you like to enter your program's operating hours?" If any answer except "Standard Hours" is selected.**

21) Select the days your program is open during standard operating hours. *Seleccione los días que su programa está abierto durante el horario de funcionamiento estándar.*

☐ Sunday *Domingo*

☐ Monday *Lunes*

☐ Tuesday *Martes*

☐ Wednesday *Miércoles*

☐ Thursday *Jueves*

☐ Friday *Viernes*

☐ Saturday *Sábado*

**Logic: Hidden unless: #19 Question "How would you like to enter your program's operating hours?" If any answer except "Non-Standard Hours" is selected.**

22) If operating hours vary by day, please complete the grid below with times XX:XXAM/PM. For example, 07:30 AM or 11:00 PM. *Si las horas de funcionamiento varían por día, complete la cuadrícula siguiente con los tiempos XX:XX AM / PM. Por ejemplo, 07:30 AM o 11:00 PM.*

Day <i>Día</i>	Start <i>Apertura</i>	End <i>Cierre</i>
Sunday <i>Domingo</i>		
Monday <i>Lunes</i>		
Tuesday <i>Martes</i>		
Wednesday <i>Miércoles</i>		
Thursday <i>Jueves</i>		
Friday <i>Viernes</i>		
Saturday <i>Sábado</i>		

**Logic: All Providers**

23) Have you adjusted your hours of operation in response to COVID-19? *¿Ajustó las horas de operación a causa del COVID-19?*

☐ Yes *Sí*



☐ No

**Logic: Hidden unless: #23 Question "Have you adjusted your hours of operation in response to COVID-19?" If any answer except "Yes" is selected.**

24) If so, please provide your PRE-COVID operating hours, indicating the start and end time for each day, and NA for the days you were closed. *Si su respuesta es afirmativa, indique las horas operativas PRE-COVID y detalle los horarios de inicio y finalización de la jornada para cada día. Coloque N/D para los días en que estaba cerrado.*

Day Día	Start Apertura	End Cierre
Sunday Domingo		
Monday Lunes		
Tuesday Martes		
Wednesday Miércoles		
Thursday Jueves		
Friday Viernes		
Saturday Sábado		

**Logic: All Providers**

25) How many weeks per year do you operate? *¿Cuántas semanas al año opera?*  
(Drop down of count)

**Logic: All Providers**

26) What information do you use to set your private pay rates? Check all that apply. *¿Qué información utiliza para establecer sus tarifas de pago privadas? Seleccione todos los que correspondan*

- ☐ DHS/CCAP Reimbursement Rates *Tarifas de reembolso de los programas DHS/CCAP*
- ☐ Rates of nearby child care programs *Tarifas de programas de cuidado infantil cercanos*
- ☐ Board of Directors/Corporate Office *Directorio/Oficina Corporativa*
- ☐ What I feel families can afford *Cuánto creo que pueden pagar las familias*
- ☐ Overall operating costs *Costos operativos generales*
- ☐ Other, please specify *Otro. Especificar*

## Subsidy Section

**Logic: All Providers**

27) Do you accept DHS subsidy (Child Care Assistance Program- CCAP)? *¿Acepta el subsidio del DHS (Child Care Assistance Program- CCAP)?*

- ☐ Yes *Sí*
- ☐ No

**Logic: Hidden unless: #27 Question "Do you accept DHS subsidy" is "Yes"**

28) In the last year, has the number of DHS/CCAP subsidized children you serve: *En el último año, la cantidad de niños subsidiados por DHS / CCAP que usted atiende a:*

- ☐ Increased *Aumentado*
- ☐ Decreased *Disminuido*
- ☐ Stayed the Same *Se mantuvo igual*

**Logic: Hidden unless: #27 Question "Do you accept DHS subsidy" is "Yes"**

29) Does your program cap or limit the number of children with subsidies that you will serve? *¿Tiene su programa algún tope o límite para la cantidad de niños con subsidios que usted atenderá?*

- ☐ Yes *Sí*
- ☐ No

**Logic: Hidden unless: #29 Question "Does your program cap or limit the number of children with subsidies that you will serve" is "Yes"**

30) What is the program percentage cap of subsidized slots? *¿Cuál es el límite de su programa (en porcentaje) de espacios subsidiados?*



- ☐ 0-25%
- ☐ 26-50%
- ☐ 51-75%
- ☐ 76-100%

**Logic: Hidden unless: #29 Question “Does your program cap or limit the number of children with subsidies that you will serve” is “Yes”**

31) My program caps or limits the number of children participating in subsidy because: *Mi programa limita el número de niños que participan en el subsidio porque:* \_\_\_\_\_

**Logic: Hidden unless: #28 Question “In the last year, has the number of DHS/CCAP subsidized children you serve” is “Decreased”**

32) If you answered “Decreased” in the previous question, why? Select all that apply. *Si respondió “Disminuido” en la pregunta anterior, ¿por qué? Seleccione todas las que correspondan.*

- ☐ Funding issue *Problema de financiamiento*
- ☐ Decreased family demand *Demanda reducida de familias*
- ☐ Reimbursement Rate not sufficient to sustain budget *Tarifa de reembolso insuficiente para sostener el presupuesto*
- ☐ Too much paperwork *Demasiado papeleo*
- ☐ Families lost CCAP eligibility/no longer qualify *Las familias perdieron la elegibilidad para el CCAP/ya no califican*
- ☐ Other, please specify: *Otro. Especificar*

**Logic: Hidden unless: #27 Question “Do you accept DHS subsidy” is “No”**

33) Are you familiar with DHS’s child care subsidy program? If not what would you recommend to increase awareness? *¿Está familiarizado con los programas de subsidio para cuidado infantil del DHS? De no ser así, ¿qué recomendaría para aumentar su conocimiento al respecto?*

- ☐ Yes, and I feel that DHS could improve awareness by: \_\_\_\_\_ *Sí, y creo que DHS podría mejorar la conciencia al*
- ☐ No, and to increase awareness DHS could: \_\_\_\_\_ *No, y para aumentar su conocimiento, el DHS podría::*

**Logic: Hidden unless: #27 Question “Do you accept DHS subsidy” is “No”**

34) Please select the reasons that may prevent you from participating in DHS CCAP. Select all that apply. *Por favor seleccione los motivos que podrían impedirle participar en el CCAP del DHS. Seleccione todas las que correspondan.*

- ☐ Capacity is full with private pay. *La capacidad esta completa con pago privado.*
- ☐ Program has a long waitlist of private pay families *El programa tiene una larga lista de espera para familias de pago privado.*
- ☐ No demand for subsidized care in the program’s area *No hay demanda de cuidado subsidiado en el área del programa.*
- ☐ Subsidy reimbursement rates are not sufficient *Las tarifas de reembolso de subsidios no son suficientes.*
- ☐ Required participation in QRIS *Se requiere participación en el QRIS.*
- ☐ Reimbursement received too long after service is provided *El reembolso se recibe mucho tiempo después de haberse prestado el servicio.*
- ☐ Too much administrative work involved *Hay demasiado trabajo administrativo involucrado.*
- ☐ Disagree with policies associated with the subsidy program *No estoy de acuerdo con las políticas asociadas al programa de subsidios*
- ☐ Challenges collecting co-payments from subsidy recipient families *Hay problemas para cobrar los copagos de las familias beneficiarias del subsidio.*
- ☐ Turnover among subsidy recipient families *Rotación entre las familias beneficiarias de los subsidios.*
- ☐ I don’t know enough about DHS’s subsidy program to participate *No sé lo suficiente acerca del programa de subsidios del DHS como para participar en él.*
- ☐ Significant family needs *Necesidades significativas de las familias.*
- ☐ Child behavioral challenges *Problemas conductuales de los niños.*
- ☐ Other, please specify *Otro, por favor especifique*

**Logic: Hidden unless: #27 Question “Do you accept DHS subsidy” is “Yes”**

35) Please select the reasons that may prevent you from participating or limit your current participation in DHS CCAP. Select all that apply. *Por favor seleccione los motivos que podrían impedirle o limitar su participación en el CCAP del DHS. Seleccione todas las que correspondan.*

- ☐ Not Applicable, I serve or am willing to serve all subsidized children *No aplica. Presto servicio o estoy dispuesto a prestar servicio a todos los niños subsidiados.*
- ☐ Capacity is full with private pay. *La capacidad es completa con pago privado.*
- ☐ Program has a long waitlist of private pay families *El programa tiene una larga lista de espera para familias de pago privado.*
- ☐ No demand for subsidized care in the program’s area *No hay demanda de cuidado subsidiado en el área del programa.*
- ☐ Subsidy reimbursement rates are not sufficient *Las tarifas de reembolso de subsidios no son suficientes.*
- ☐ Reimbursement received too long after service is provided *El reembolso se recibe mucho tiempo después de haberse prestado el servicio.*
- ☐ Too much administrative work involved *Hay demasiado trabajo administrativo involucrado.*
- ☐ Disagree with policies associated with the subsidy program *No estoy de acuerdo con las políticas asociadas al programa de subsidios*
- ☐ Challenges collecting co-payments from subsidy recipient families *Hay problemas para cobrar los copagos de las familias beneficiarias del subsidio*
- ☐ Turnover among subsidy recipient families *Rotación entre las familias beneficiarias de los subsidios.*
- ☐ I don’t know enough about DHS’s subsidy program to participate *No sé lo suficiente acerca del programa de subsidios del DHS como para participar en él.*
- ☐ Significant family needs *Necesidades significativas de las familias.*
- ☐ Child behavioral challenges *Problemas conductuales de los niños.*
- ☐ Other, please specify *Otro, por favor especifique*

**Logic: Hidden unless: #27 Question “Do you accept DHS subsidy” is “No”**

36) Which would incentivize your participation in DHS subsidy program? Select all that apply. *¿Qué factores lo incentivarían a participar en el sistema de subsidios del DHS? Seleccione todos los que correspondan.*

- ☐ Increased subsidy reimbursement rates *Mayores tarifas de reembolso de subsidios.*
- ☐ Opportunity for additional support services (Example: Technical assistance, referral services, assistance with child/family needs) *Oportunidad para prestar servicios de apoyo adicional (Ejemplo: Asistencia técnica, servicios de derivación, asistencia con las necesidades de la familia o del niño).*
- ☐ Opportunity for additional resources including professional development *Oportunidad para recursos adicionales que incluyan desarrollo profesional.*
- ☐ Assistance with quality initiatives (Example: Assistance with participation in QRIS or accreditation) *Asistencia con iniciativas de calidad (Ejemplo: Asistencia con la participación en el QRIS o con la acreditación).*
- ☐ Increase in transportation reimbursement rate *Aumento de la tarifa de reembolso para transporte.*
- ☐ Increase in food reimbursement *Aumento del reembolso para comidas.*
- ☐ Assistance with subsidy management and administration *Asistencia con la gestión y administración del subsidio*
- ☐ None of the above *Ninguno de los anteriores.*
- ☐ Other *Otro*

**Quality Section**

**Logic: All Providers**

37) Does your program participate in BrightStars (QRIS)? *¿Su programa participa en BrightStars (QRIS)?*

- ☐ Yes *Sí*
- ☐ No

**Logic: Hidden unless: #37 Question “Does your program participate in BrightStars?” is “Yes”**

38) Is tiered reimbursement an incentive to maintain participation in BrightStars? *¿Es el reembolso escalonado un incentivo para mantener la participación en BrightStars?*

- ☐ Yes *Sí*
- ☐ No, because \_\_\_\_\_ *No, porque \_\_\_\_\_*

**Logic: Hidden unless: #37 Question “Does your program participate in BrightStars?” is “No”**

39) If you do not currently participate in BrightStars, why not? (Check all that Apply) *Si actualmente no participa en BrightStars, explique el motivo. (Marque todas las que correspondan)*

- ☐ Too much paperwork *Demasiado papeleo*
- ☐ DHS/CCAP Rates do not support quality *Las tarifas de los DHS/CCAP no apoyan la calidad*
- ☐ Don't understand the process/tools *No entiendo los procesos/herramientas*
- ☐ Time-consuming *Requiere de mucho tiempo*
- ☐ Too costly *Muy costoso*
- ☐ Other (please specify) *Otro. Especificar*

**Logic: All Providers**

40) What supports and resources would assist you in improving the quality of your program? Select all that apply. *¿Qué apoyos y recursos podrían servirle para mejorar la calidad de su programa? Seleccione todas las opciones que correspondan.*

- ☐ Scholarships for staff/employees (Free or low-cost college coursework) *Becas escolares para personal/empleados (cursos universitarios gratuitos o de bajo costo)*
- ☐ Tiered Reimbursement (Higher DHS/CCAP Rates) *Reembolsos escalonados (tarifas DHS/CCAP más altas)*
- ☐ Free/Low-cost Professional Development Opportunities *Oportunidades de desarrollo profesional gratuitas o de bajo costo*
- ☐ Coaching, Mentoring, and Technical Assistance *Coaching, Tutoría y Asistencia Técnica*
- ☐ Grants for Facilities Improvements *Subsidios para mejoras en las instalaciones*
- ☐ Grants for Quality Improvement *Subsidios para mejoras de calidad*
- ☐ Assistance with Cost of Materials and Supplies *Asistencia con el costo de los materiales y suministros*
- ☐ Help improving compensation and benefits to recruit and retain qualified and effective early educators and afterschool staff. *Ayuda para mejorar las compensaciones y beneficios para contratar y retener educadores de las etapas iniciales calificados y efectivos así como también a personal para después de clases.*
- ☐ Low Cost Loans *Préstamos de bajo costo*
- ☐ Bonus for Increasing your BrightStars Rating *Bonificaciones por aumentar su nivel en BrightStars*
- ☐ Other (please specify) *Otro. Especificar*

**Logic: All Providers**

41) How did you hear about this survey? *¿Cómo se enteró de esta encuesta?*

- ☐ Email from [RIDHSSurvey@pcgus.com](mailto:RIDHSSurvey@pcgus.com) *E-mail de RIDHSSurvey@pcgus.com*
- ☐ Email from RI DHS *E-mail del DHS de Rhode Island*
- ☐ Postcard *Tarjeta postal*
- ☐ Telephone Outreach *Llamada telefónica*
- ☐ From your licensor or other technical assistance staff *Por su licenciario u otro personal de asistencia técnica*
- ☐ Text Message *Mensaje de texto*
- ☐ Social Media *Redes sociales*
- ☐ Someone Else *Otra persona*
- ☐ Other, please specify: \_\_\_\_\_ *Otro medio. Especificar*

**END OF SURVEY PAGE**

THANK YOU for completing the 2021 Rhode Island Market Rate Survey. This is the end of the survey. Your response is very important as it will help set the childcare subsidy rate for the next three years!

Click here: <http://bit.ly/RIcost> to tell us more about the costs of running a child care program and be entered to win one of eight \$50 Visa gift cards. While it is optional, DHS is encouraging providers to complete the “Cost of Care” questions, as this information gathered will be used understand the true cost of providing child care, which will be important as DHS reviews the CCAP subsidy reimbursement rates.

GRACIAS por completar la Encuesta de tarifas del mercado de Rhode Island 2021. Ha llegado al final de la encuesta. Su respuesta es muy importante porque ayudará a establecer las tarifas de subsidio por cuidado infantil para los próximos tres años.

Haga clic aquí <http://bit.ly/Rlcost> para contarnos más sobre los costos de administrar un programa de cuidado infantil y tendrá la oportunidad de ganar otra tarjeta de regalo Visa. Si bien esta encuesta es opcional, el DHS anima a los proveedores de servicios a completar la sección "Costo del cuidado" de la encuesta, puesto que la información que se recoja se usará para entender mejor el costo real de brindar servicios de cuidado infantil, lo cual será muy importante cuando el DHS revise las tarifas de reembolsos de subsidios del CCAP.

**Cost of Care Section/ Costo de Forma de Cuidado**

DHS is requesting cost of care (expense information) to better understand the provider's true cost of providing child care to children. DHS will use this information in aggregate to assess how/if subsidy rates are sufficient in covering a provider's true cost of care. Also, by answering the cost of care questions, you will be providing DHS with the information they need to continue advocating for systemic support and change in the early childhood system from state legislatures.

*DHS solicita información sobre el costo del cuidado (datos sobre los gastos) para entender mejor el costo real de cada proveedor de cuidado infantil. El DHS usará la información recopilada para evaluar cómo/ si las tarifas de subsidios son suficientes para cubrir el costo real que tienen los proveedores. Además, al responder las preguntas sobre el costo del cuidado infantil, le brindará al DHS la información que necesita para continuar luchando por un apoyo sistémico y cambios en el sistema infantil temprano por parte de las legislaturas estatales.*

**Logic: All Providers**

1) Please select your preferred language for completing this survey.  
*Por favor seleccione el idioma que prefiera para completar esta encuesta.*

☐ English

☐ Español

**Logic: All Providers**

2) Please enter your provider Licensing ID\*. This ID is located on the bottom left of your DHS Child Care License.  
*Por favor escriba el ID de su licencia de proveedor. Ese ID se encuentra en la izquierda de la parte inferior de su Licencia de Cuidado Infantil del DHS.\**

**Logic: All Providers**

3) Please select your program type.

*Por favor seleccione su tipo de programa.\**

☐ CENTER-Based - CENTRO

☐ FAMILY Child Care Home – HOGAR de Cuidado Infantil

**Logic: Hidden unless: #3 Question "Please select your program type." is "Centers"**

4) Service and Administrative Personnel Salary Expenses. Please enter the costs of staff salary/wages and total FTEs for your program staff as shown below. *Gastos en salarios del personal de administración y atención. Ingrese los costos de los salarios/sueldos de su personal y los FTE totales correspondientes al personal de su programa tal como se muestra a continuación.*

<b>Staff- Salaried</b> <i>Personal Asalariado</i>	<b>Full-Time-Equivalent (FTE)</b> <i>Equivalente a Tiempo Completo</i>	<b>Total Annual Cost</b> <i>Costo Total Anual</i>
Director		
Administrator <i>Administrador</i>		
Ed. Coordinator <i>Coordinadora de Educación</i>		

<b>Staff- Hourly</b> <i>Personal por hora</i>	<b>Full-Time-Equivalent (FTE)</b> <i>Equivalente a Tiempo Completo</i>	<b>Salary Range</b>	
		<b>Lowest Hourly Wage</b> <i>Salario Mas Bajo por Hora</i>	<b>Highest Hourly Wage</b> <i>Salario Mas Alto por hora</i>
Lead Teacher <i>Docente titular</i>			
Assistant Teacher <i>Maestra Auxiliar</i>			
Additional Staff <i>Personal Adicional</i>			
Substitutes <i>Substituto</i>			

**Logic: Hidden unless: #3 Question "Please select your program type." is "Centers"**

5) What is the education level of your staff? *¿Cuál es el nivel de educación de su personal?*

Education Level <i>Nivel de Educación</i>	Number of Staff <i>Número de empleado</i>
Less than High School <i>Inferior a la Escuela Secundaria</i>	
High School or Equivalent <i>Escuela Secundaria o GED</i>	
Some College <i>Estudios Universitarios incompletos</i>	
Child Development Associate <i>Asociado de Desarrollo Infantil</i>	
Associates Degree <i>Título Asociado</i>	
Bachelor's Degree <i>Licenciatura</i>	
Graduate Degree <i>Diploma de Graduación</i>	

**Logic: Hidden unless: #3 Question "Please select your program type." is "Centers"**

6) Please enter the typical number of classrooms open and maximum number of children attending at one time in a classroom. *Ingrese el número típico de aulas abiertas y el número máximo de niños que asisten a la vez en un aula.*

Child Age <i>Edad</i>	Number of Classrooms <i>Número de aulas</i>	Maximum number of Children Currently Attending in Classroom <i>Número máximo de niños que asisten actualmente al aula</i>
Infant (Birth to 18 mos) <i>Infante: Desde el nacimiento hasta los 18 meses</i>		
Toddler (18 to 36 mos) <i>Niños pequeños: De 18 meses a 36 meses</i>		
Preschool (3 to 5 years) <i>Preescolar: De 3 años meses a 5 años</i>		
School-age (Kindergarten or above) <i>Edad escolar: Kindergarten o superior</i>		

**Logic: Hidden unless: #3 Question "Please select your program type." is "Centers"**

7) In the last year, has the number of classrooms or the ages you serve changed? *En el último año, ¿ha cambiado el número de aulas o las edades a las que presta servicios?*

	Increased <i>Aumentada</i>	Decreased <i>Disminuida</i>	No Change <i>Ningún cambio</i>
Infant (Birth to 18 mos) <i>Infante: Desde el nacimiento hasta los 18 meses</i>			
Toddler (18 to 36 mos) <i>Niños pequeños: De 18 meses a 36 meses</i>			
Preschool (3 to 5 years) <i>Preescolar: De 3 años meses a 5 años</i>			
School-age (Kindergarten or above) <i>Edad escolar: Kindergarten o superior</i>			

**Logic: Hidden unless: #3 Question "Please select your program type." is "Family Child Care"**

8) Licensee Salary. If you pay yourself a salary, please provide the average cost for your program (do not include any additional taxes or benefits you may pay for, such as health insurance), and select whether it is an annual or monthly cost. *Salario del Titular de la Licencia. Si usted paga su mismo salario, favor de proporcionar el costo promedio de su programa (no incluya ningún impuesto o beneficio adicional que usted paga, como seguro de salud) y seleccione si es mensual o anual.*



	Total Salary Paid Salario Pagado	Monthly or Annually (Dropdown) ¿Mensual o Anual?
Licensee/Owner's Draw <i>Titular de la Licencia /Salario del propietario</i>		

**Logic: Hidden unless: #3 Question "Please select your program type." is "Family Child Care"**

9) What is your level of education? *¿Cuál es su nivel educativo?*

- ☐ Less than High School *Inferior a la Escuela Secundaria*
- ☐ High School or Equivalent *Escuela Secundaria o GED*
- ☐ Some College *Estudios universitarios incompletos*
- ☐ Child Development Associate (CDA) *Asociado del Desarrollo Infantil*
- ☐ Associates Degree *Titulo Asociado*
- ☐ Bachelor's Degree *Licenciatura*
- ☐ Graduate Degree *Diploma de Graduación*

**Logic: Hidden unless: #3 Question "Please select your program type." is "Family Child Care"**

10) Personnel Salary Expenses. Please enter the hourly wage for the following staff, if your program has them (please combine all staff of the type listed). Please also provide the average amount of staff per category your program may pay for and average amount of hours they may work. For each category, please list from the dropdown menu whether these costs are monthly or annually. *Gastos salariales de personal. Ingrese el salario por hora del siguiente personal, si su programa lo tiene (combine todo el personal del tipo indicado). Por favor proporcione también la cantidad de personal por categoría que puede pagar su programa y la cantidad de horas que pueden trabajar. Para cada categoría, enumere en el menú de abajo si estos costos son mensuales o anuales.*

	Avg. Number of Staff Número promedio de personal	Avg. Hours Worked Horas promedio trabajadas	Lowest Hourly Wage Salario más bajo por hora	Highest Hourly Wage Salario más alto por hora	Pay Frequency: Monthly or Annually Frecuencia de pago ¿Mensual o Anual?
Emergency Assistant <i>Asistente de Emergencia</i>					
Assistant Substitute <i>Asistente Substituto</i>					
Consulting Staff <i>Personal Consultor</i>					

**Logic: Hidden unless: #3 Question "Please select your program type." is "Family Child Care"**

11) Could you tell us more about the highest education level for each of your staff?

*¿Podría contarnos más sobre el nivel educativo más alto de cada uno de sus empleados?*

Education Level Nivel de Educación	Number of Staff Número de empleado
Less than High School <i>Inferior a la Escuela Secundaria</i>	
High School or Equivalent <i>Escuela Secundaria o GED</i>	
Some College <i>Estudios Universitarios incompletos</i>	
Child Development Associate <i>Asociado del Desarrollo Infantil</i>	
Associates Degree <i>Titulo Asociado</i>	
Bachelor's Degree <i>Licenciatura</i>	
Graduate Degree <i>Diploma de Graduación</i>	

**Logic: Hidden unless: #3 Question "Please select your program type." is "Family Child Care"**

12) Typically, how many children are attending at one time in your program?

*Por lo general, ¿cuántos niños asisten a la vez en su programa?* \_\_\_\_\_

**Logic: All Providers**

13) Do you anticipate needing to make any operational or programmatic adjustments in anticipation of a state or federal minimum wage increase? Example: Increase tuition rates or group size. *¿Cree que será necesario realizar ajustes operativos o programáticos ante la posibilidad de un aumento del salario mínimo a nivel estatal o federal? Ejemplo: aumentar las tarifas o el tamaño del grupo.*

☐ No

☐ Yes Si

**Logic: Hidden unless: #3 Question "Do you anticipate needing to make any operational or programmatic adjustments in anticipation of a federal minimum wage?" is "Yes"**

14) What programmatic adjustments do you anticipate making if (or when) a state or federal minimum wage is raised to \$15/hour? Select all that apply. *¿Qué ajustes programáticos cree que realizará si se eleva el salario mínimo a \$15/hora (o cuando se eleve) a nivel estatal o federal? Seleccione todas las opciones que corresponda.*

☐ Increase private pay tuition rates or fees *Aumento en las tarifas o matrículas de pago privado*

☐ Reduce current staff hours *Reducción de las horas actuales de personal*

☐ Reduce program operation hours *Reducción de las horas operativas del programa*

☐ Reduce/cap the number of CCAP children enrolled *Reducción/limitación de la cantidad de niños/as inscritos a través del CCAP*

☐ Increase CCAP participation *Aumento de la participación del CCAP*

☐ Apply for alternative forms of revenue, such as grants or community investments *Solicitud de formas alternativas de ganancias, como subsidios o inversiones comunitarias*

☐ Apply for private loans *Solicitud de préstamos privados*

☐ Increase classroom sizes *Aumento del tamaño de las aulas*

☐ Reduce staffing ratios to the minimum ratio required *Reducción de la proporción de personal al mínimo requerido*

☐ Other, please specify: *Otro. Especificar*

**Logic: All Providers**

15) Personnel Benefits and Other Staff Expenses. Please enter your total annual program expenses to the following personnel-related costs, if applicable, including your own. *Beneficios al personal y demás gastos en personal Sirvase de escribir los gastos totales anuales de su programa en los siguientes costos relacionados con el personal.*

	Total Annual Cost Costo anual total
Employer's share of Social Security and Medicare Tax <i>Cuota patronal por los impuestos del Seguro Social y Medicare</i>	
Unemployment Tax (Report Total of Division of Employment Security quarterly reports) <i>Impuestos de desempleo (informes trimestrales de los informes totales de división de seguridad ante desempleo)</i>	
Worker's Compensation Annual INSURANCE Premium <i>Prima de SEGUROS anual de compensación para trabajadores</i>	
Employer's share of: Health, Dental, Disability, Life and other insurance <i>Cuota de empleador de: salud, plan dental, discapacidad, seguro de vida y otros</i>	

**Logic: Hidden unless: #3 Question "Please select your program type." is "Family Child Care"**

16) Program Expenses. Please enter your total monthly expenses for the following categories, if applicable. *Gastos de Programa. Favor de Ingresar los gastos totales mensual para las siguientes categorías, si aplica.*

	Total Monthly Cost Costo mensual total
Accounting & Legal <i>Contabilidad y Legal</i>	
Allowance for Bad Debt and Vacancy <i>Subsidio por deuda incobrable y vacante</i>	
Cleaning or Maintenance Fees <i>Matriculacion de limpieza o mantenimiento</i>	
Debt Service <i>Servicios de Deuda</i>	



	Total Monthly Cost Costo mensual total
Insurance (liability or similar) Seguro (responsabilidad o similar)	
Rent/Mortgage (specifically the portion your program pays for) Renta/Pagos de Casa (específicamente la porción que paga su programa)	
Repairs to Program Equipment Reparación de equipos del programa	
Taxes (including real estate, vehicle, etc.) Impuestos (incluidos bienes inmuebles, vehículos, etc.)	
Training & Professional Development Desarrollo Profesional y Entrenamiento	
Utilities (power, water, telephone, etc.) Utilidades (electricidad, agua, teléfono, etc.)	
Supplies (food, office, educational, etc.) Suministros (comida, oficina, educacional, etc.)	
Other, please specify in the next box Otro, favor de especificar en la otra línea	

Logic: Hidden unless: #3 Question "Please select your program type." is "Centers"

17) Program Expenses. Please enter your total annual program expenses. Gastos programáticos. Sírvase de escribir sus gastos programáticos totales anuales.

	Total Annual Cost Costo anual total
<b>Occupancy/Ocupación</b>	
Building Insurance Seguro del edificio	
Fees/Permits Tarifas / Permisos	
Insurance (liability, accident, etc.) Seguro (responsabilidad o similar)	
Maintenance/Repair/Cleaning Matriculación de limpieza o Mantenimiento	
Utilities (Electric, gas, water/sewer, etc.) Utilidades (electricidad, agua, teléfono, etc.)	
Rent /Lease Renta/Pagos de Casa	
Telephone & Internet Teléfono e Internet	
Taxes (including real estate, vehicle, etc.) Impuestos (incluidos bienes inmuebles, vehículos, etc.)	
Miscellaneous Otro	
<b>Office Operations/Operaciones de oficina</b>	
Audit/Bookkeeping mantenimiento de registros financieros	
Computers and other technological equipment Computadoras y otros equipos tecnológicos	
Printing and Postage impresión y envío	
Miscellaneous Otro	
<b>Programmatic Operations/Operaciones programáticas</b>	
Advertising publicidad	
Child assessment system sistema de evaluación infantil	
Curriculum plan de estudios	
Supplies & Equipment Suministros y equipo	
Food & Food Prep Alimentos y preparación de alimentos	
Vehicle Expenses (Including Mileage and Insurance) Gastos del vehículo (incluido el kilometraje y el seguro)	
Miscellaneous Otro	
<b>Staffing &amp; Professional Development/Dotación de personal y desarrollo profesional</b>	
Consultants/Training Consultores / Capacitación	
Miscellaneous Otro	

Logic: All Providers

18) How has the COVID-19 pandemic effected your program financially? *¿Cómo afectó financieramente la pandemia del COVID-19 a su programa?*

**Logic: All Providers**

19) Which of the following revenue sources does your program receive (check all that apply)? *¿Cuáles de las siguientes fuentes recibe su programa (marque todas las que correspondan)?*

- ☐ Tuition/Fees paid by private-pay families *Matrícula/cuotas pagadas por los padres bajo el sistema de pago privado*
- ☐ Family fees paid by subsidized families *Cuotas de padres pagadas por los padres subsidiados*
- ☐ CCAP
- ☐ Head Start (federal or state share) *Programa preescolar Head Start*
- ☐ Child and Adult Care Food Program (CACFP) *Programa de Alimentos y Cuidados para Niños y Adultos (CACFP, por sus siglas oficiales en inglés)*
- ☐ Local government (e.g., Pre-K, local school board) *Gobierno local (por ejemplo: preescolar, consejo escolar local)*
- ☐ Community organizations or other grants (e.g., United Way, local charities) *Organizaciones comunitarias u otros subsidios (por ej.: United Way, instituciones de caridad locales)*
- ☐ Fundraising activities, gifts, cash contributions *Actividades dirigidas a recaudar fondos, donaciones, contribuciones en efectivo*
- ☐ Tribal Funding Sources *Fuentes de financiación tribales*
- ☐ Federal funding made available during COVID-19, such as SBA loan, PPP or CARES Act Fund *Financiamiento federal durante la crisis del COVID-19, como préstamos SBA, PPP o la ley de financiamiento CARES*
- ☐ In-kind contributions, such as free or reduced rent from donor organization like a church, etc. *Contribuciones similares, tales como renta reducida o gratuita por parte de organizaciones donantes como iglesias, etc.*
- ☐ Other \_\_\_\_\_ *Otro*

**END OF SURVEY PAGE**

Thank you for completing this survey!  
*Gracias por tomar nuestra encuesta.*

## Appendix B. Data Analysis

### Market Rate Survey

TABLE 58. MARKET RATE SURVEY RESPONSE RATES

Analysis Metrics		Total Population	Subgroup Total as a Percent of Total Population	Target Goal	Subgroup Total as a Percent of Target Goal	Actual-Sample	Percent of Target Goal	Percent of Actual Sample	Difference between Total Population Representation & Sample Population
Total	Total	809	100.0%	261	100.0%	437	167%	100.0%	0.0%
Provider Type	FCC Providers	406	50.2%	131	50.2%	172	131%	39.4%	-10.8%
	Center providers	403	49.8%	130	49.8%	265	204%	60.6%	10.8%
Location	Outside Urban Core	416	51.4%	134	51.3%	241	180%	55.1%	3.7%
	Urban Core	393	48.6%	127	48.7%	196	154%	44.9%	-3.7%
Language	English	540	66.7%	174	66.7%	322	185%	73.7%	6.9%
	Spanish	268	33.1%	86	33.0%	115	134%	26.3%	-6.8%
	Other	1	0.1%	0	0.0%	0	0%	0.0%	-0.1%
County	Bristol	34	4.2%	11	4.2%	19	173%	4.3%	0.1%
	Kent	60	7.4%	19	7.3%	32	168%	7.3%	-0.1%
	Newport	19	2.3%	6	2.3%	12	200%	2.7%	0.4%
	Providence	657	81.2%	212	81.2%	354	167%	81.0%	-0.2%
	Washington	39	4.8%	13	5.0%	20	154%	4.6%	-0.2%
CCAP Participation	Private Pay Only	118	14.6%	38	14.6%	51	134%	11.7%	-2.9%
	CCAP Participant	691	85.4%	223	85.4%	386	173%	88.3%	2.9%
Underrepresented Community	Underrepresented Community	40	4.9%	13	5.0%	33	254%	7.6%	2.6%
Head Start Participation	Yes	39	4.8%	13	4.8%	16	127%	3.7%	-1.2%
	No	770	95.2%	248	95.2%	421	169%	96.3%	1.2%
State PreK	Yes	39	4.8%	13	4.8%	24	191%	5.5%	0.7%
	No	770	95.2%	248	95.2%	413	166%	94.5%	-0.7%
BrightStars Participation	Yes	640	79.1%	206	79.1%	351	170%	80.3%	1.2%
	No	169	20.9%	55	20.9%	86	158%	19.7%	-1.2%
BrightStars Quality Level	1	289	35.7%	93	35.7%	141	151%	32.3%	-3.5%
	2	212	26.2%	68	26.2%	123	180%	28.1%	1.9%
	3	48	5.9%	15	5.9%	29	187%	6.6%	0.7%
	4	73	9.0%	24	9.0%	46	195%	10.5%	1.5%
	5	18	2.2%	6	2.2%	12	207%	2.7%	0.5%

Analysis Metrics		Statistical Significance Threshold (95% confidence interval, 5% MOE)	Statistical Significance met	Margin of Error of Actual Sample, with 95% confidence interval
Total	Total	261	Yes	3.18%
Provider Type	FCC Providers	198	No	5.68%
	Center providers	197	Yes	3.53%
Location	Outside Urban Core	200	Yes	4.10%
	Urban Core	195	Yes	4.96%
Language	English	225	Yes	3.47%
	Spanish	159	No	6.92%
	Other	1	No	0
County	Bristol	32	No	15%
	Kent	53	No	11.90%
	Newport	19	No	17.60%
	Providence	243	Yes	3.54%
	Washington	36	No	15.40%
CCAP Participation	Private Pay Only	91	No	10.30%
	CCAP Participant	193	Yes	3.32%
Underrepresented Community	Underrepresented Community	37	No	7.23%
Head Start Participation	Yes	36	No	19%
	No	257	Yes	3.22%
State PreK	Yes	36	No	12.57%
	No	257	Yes	3.29%
BrightStars Participation	Yes	241	Yes	3.52%
	No	118	No	7.43%
BrightStars Quality Level	1	166	No	7.50%
	2	137	No	8.14%
	3	43	No	17.88%
	4	62	No	14.04%
	5	18	No	28.10%

## Rates at the 75<sup>th</sup> Percentile

### Center Based

#### Infant Rates

Percentile	Infant Full-Time	Infant Three Quarter-Time	Infant Half-Time	Infant Quarter-Time
Sample Size	86	70	65	43
100th Percentile	\$391.92	\$315.00	\$297.00	\$257.54
95th Percentile	\$367.00	\$288.00	\$259.51	\$190.00
90th Percentile	\$352.50	\$280.00	\$248.00	\$183.40
85th Percentile	\$310.75	\$271.53	\$230.00	\$152.10

Percentile	Infant Full-Time	Infant Three Quarter-Time	Infant Half-Time	Infant Quarter-Time
80th Percentile	\$300.00	\$260.03	\$221.00	\$149.20
<b>75th Percentile</b>	<b>\$289.00</b>	<b>\$250.00</b>	<b>\$215.00</b>	<b>\$126.00</b>
70th Percentile	\$281.50	\$250.00	\$204.60	\$125.00
65th Percentile	\$275.00	\$244.70	\$200.00	\$111.50
60th Percentile	\$270.00	\$235.00	\$199.40	\$100.00
5th Percentile	\$230.00	\$177.25	\$129.00	\$65.00
55th Percentile	\$267.75	\$230.95	\$190.60	\$100.00
50th Percentile	\$265.00	\$225.00	\$185.00	\$95.00
45th Percentile	\$265.00	\$220.00	\$175.87	\$91.20
40th Percentile	\$260.00	\$218.00	\$161.28	\$89.04
35th Percentile	\$257.54	\$210.45	\$155.00	\$84.70
30th Percentile	\$252.00	\$208.50	\$150.80	\$83.60
25th Percentile	\$250.00	\$201.00	\$150.00	\$78.60
20th Percentile	\$245.00	\$200.80	\$144.00	\$70.92
15th Percentile	\$236.50	\$193.80	\$134.00	\$67.00
10th Percentile	\$232.50	\$192.84	\$132.80	\$66.20

#### Toddler Rates

Percentile	Toddler Full-Time	Toddler Three Quarter-Time	Toddler Half-Time	Toddler Quarter Time
Sample Size	122	105	100	63
100th Percentile	\$447.92	\$364.00	\$273.00	\$205.00
95th Percentile	\$344.65	\$293.33	\$250.25	\$189.30
90th Percentile	\$317.06	\$268.70	\$227.30	\$153.00
85th Percentile	\$299.40	\$256.62	\$215.45	\$150.00
80th Percentile	\$276.87	\$247.60	\$205.20	\$137.40
<b>75th Percentile</b>	<b>\$273.05</b>	<b>\$239.79</b>	<b>\$200.00</b>	<b>\$125.00</b>
70th Percentile	\$268.00	\$235.00	\$190.00	\$115.00
65th Percentile	\$265.00	\$230.60	\$190.00	\$100.83
60th Percentile	\$260.00	\$225.00	\$186.60	\$100.00
5th Percentile	\$198.10	\$170.80	\$88.85	\$50.00
55th Percentile	\$257.54	\$220.11	\$178.53	\$94.55
50th Percentile	\$255.00	\$215.00	\$170.00	\$87.60
45th Percentile	\$250.00	\$210.00	\$165.00	\$85.18
40th Percentile	\$247.00	\$205.60	\$158.00	\$83.85
35th Percentile	\$242.00	\$202.15	\$150.00	\$80.52
30th Percentile	\$235.00	\$195.00	\$142.10	\$75.00
25th Percentile	\$230.75	\$193.16	\$139.64	\$65.00
20th Percentile	\$227.60	\$190.00	\$130.00	\$65.00

Percentile	Toddler Full-Time	Toddler Three Quarter-Time	Toddler Half-Time	Toddler Quarter Time
15th Percentile	\$220.00	\$183.50	\$129.00	\$61.20
10th Percentile	\$212.30	\$175.00	\$117.80	\$54.45

#### Preschool Rates

Percentile	Pre-School Full-Time	Pre-School Three Quarter-Time	Pre-School Half-Time	Pre-School Quarter Time
Sample Size	152	134	135	90
100th Percentile	\$367.67	\$320.00	\$255.00	\$195.67
95th Percentile	\$292.63	\$266.14	\$220.60	\$154.95
90th Percentile	\$279.75	\$245.50	\$205.12	\$140.30
85th Percentile	\$270.48	\$230.00	\$195.39	\$125.00
80th Percentile	\$259.60	\$220.00	\$181.00	\$110.00
75th Percentile	\$250.00	\$212.67	\$175.00	\$100.00
70th Percentile	\$242.85	\$206.40	\$170.00	\$95.00
65th Percentile	\$240.00	\$202.00	\$161.40	\$90.00
60th Percentile	\$235.00	\$200.00	\$155.50	\$85.00
5th Percentile	\$134.25	\$123.93	\$64.07	\$40.56
55th Percentile	\$230.00	\$190.90	\$149.40	\$83.17
50th Percentile	\$225.00	\$189.00	\$140.00	\$79.44
45th Percentile	\$220.00	\$182.85	\$139.33	\$75.03
40th Percentile	\$217.00	\$180.00	\$135.00	\$74.76
35th Percentile	\$205.00	\$175.79	\$126.00	\$69.46
30th Percentile	\$200.00	\$175.00	\$123.79	\$66.00
25th Percentile	\$196.19	\$163.36	\$118.50	\$63.00
20th Percentile	\$195.00	\$156.77	\$105.59	\$54.60
15th Percentile	\$185.00	\$148.85	\$98.00	\$50.00
10th Percentile	\$180.00	\$143.73	\$92.61	\$48.90

#### School-age Rates

Percentile	School-age All Day Full-Time	School-age All Day Three Quarter-Time	School-age All Day Half-Time	School-age All Day Quarter-Time
Sample Size	73	44	41	35

Percentile	School-age All Day Full-Time	School-age All Day Three Quarter-Time	School-age All Day Half-Time	School-age All Day Quarter-Time
100th Percentile	\$350.00	\$310.00	\$255.00	\$277.08
95th Percentile	\$272.00	\$222.95	\$210.00	\$220.80
90th Percentile	\$256.00	\$210.00	\$200.00	\$206.00
85th Percentile	\$250.00	\$210.00	\$200.00	\$200.00
80th Percentile	\$248.00	\$202.00	\$175.00	\$200.00
75th Percentile	\$244.00	\$200.00	\$170.00	\$157.50
70th Percentile	\$220.00	\$200.00	\$160.00	\$150.00
65th Percentile	\$210.00	\$191.19	\$150.00	\$150.00
60th Percentile	\$209.20	\$178.20	\$150.00	\$90.40
55th Percentile	\$208.00	\$168.25	\$150.00	\$79.76
50th Percentile	\$200.00	\$158.53	\$126.67	\$63.00
45th Percentile	\$200.00	\$155.48	\$125.00	\$61.00
40th Percentile	\$200.00	\$154.67	\$122.00	\$57.12
35th Percentile	\$199.20	\$150.23	\$101.33	\$50.00
30th Percentile	\$180.00	\$150.00	\$84.00	\$50.00
25th Percentile	\$175.00	\$150.00	\$80.00	\$45.00
20th Percentile	\$165.00	\$145.68	\$78.53	\$41.52
15th Percentile	\$160.00	\$139.20	\$73.47	\$25.68
10th Percentile	\$147.60	\$126.00	\$73.47	\$23.76
5th Percentile	\$95.00	\$116.50	\$50.00	\$22.80

Percentile	School-age Before School Full-Time	School-age Before School Three Quarter-Time	School-age Before School Half-Time	School-age Before School Quarter-Time
Sample Size	34	31	51	41
100th Percentile	\$200.00	\$200.00	\$200.00	\$110.00
95th Percentile	\$110.00	\$102.50	\$90.00	\$85.22
90th Percentile	\$100.00	\$80.00	\$75.00	\$81.00
85th Percentile	\$100.00	\$76.17	\$69.50	\$70.00
80th Percentile	\$100.00	\$75.00	\$69.00	\$70.00
75th Percentile	\$93.75	\$75.00	\$69.00	\$69.00
70th Percentile	\$90.00	\$70.00	\$69.00	\$65.00
65th Percentile	\$81.75	\$67.50	\$67.00	\$60.00
60th Percentile	\$73.00	\$60.00	\$60.00	\$55.00
5th Percentile	\$38.25	\$29.50	\$22.94	\$9.60
55th Percentile	\$65.00	\$59.50	\$57.00	\$55.00

Percentile	School-age Before School Full-Time	School-age Before School Three Quarter-Time	School-age Before School Half-Time	School-age Before School Quarter-Time
50th Percentile	\$60.00	\$56.00	\$55.00	\$55.00
45th Percentile	\$58.55	\$55.00	\$55.00	\$50.00
40th Percentile	\$56.00	\$50.00	\$50.00	\$45.00
35th Percentile	\$55.00	\$45.50	\$50.00	\$40.00
30th Percentile	\$51.80	\$43.00	\$50.00	\$30.00
25th Percentile	\$50.00	\$39.50	\$47.50	\$25.00
20th Percentile	\$49.25	\$36.00	\$43.00	\$20.00
15th Percentile	\$45.00	\$35.00	\$35.00	\$19.00
10th Percentile	\$41.50	\$30.63	\$29.00	\$10.00

Percentile	School-age After School Full Time	School-age After School Three Quarter-Time	School-age After School Half-Time	School-age After School Quarter-Time
Sample Size	38	48	69	38
100th Percentile	\$225.00	\$217.50	\$142.50	\$130.00
95th Percentile	\$141.50	\$135.00	\$126.20	\$125.75
90th Percentile	\$136.50	\$130.00	\$121.00	\$115.00
85th Percentile	\$130.00	\$124.55	\$114.00	\$104.50
80th Percentile	\$125.00	\$113.80	\$104.70	\$93.80
75th Percentile	<b>\$125.00</b>	<b>\$110.00</b>	<b>\$100.00</b>	<b>\$86.25</b>
70th Percentile	\$120.00	\$106.00	\$99.17	\$79.50
65th Percentile	\$120.00	\$106.00	\$95.00	\$75.00
60th Percentile	\$112.60	\$106.00	\$94.60	\$75.00
5th Percentile	\$75.00	\$53.50	\$25.33	\$24.25
55th Percentile	\$110.70	\$106.00	\$90.00	\$66.28
50th Percentile	\$110.00	\$106.00	\$89.00	\$60.00
45th Percentile	\$104.65	\$100.75	\$89.00	\$60.00
40th Percentile	\$100.50	\$100.00	\$81.00	\$60.00
35th Percentile	\$100.00	\$82.25	\$75.00	\$59.50
30th Percentile	\$91.00	\$75.30	\$75.00	\$50.00
25th Percentile	\$85.00	\$75.00	\$60.00	\$50.00
20th Percentile	\$80.00	\$75.00	\$50.00	\$48.00
15th Percentile	\$77.75	\$75.00	\$50.00	\$40.00
10th Percentile	\$75.00	\$64.58	\$42.60	\$31.10

Percentile	School-age Before & After School Full-Time	School-age Before & After School Three Quarter-Time	School-age Before & After School Half-Time	School-age Before & After School Quarter-Time
Sample Size	53	60	47	27
100th Percentile	\$200.00	\$200.00	\$170.00	\$165.00
95th Percentile	\$200.00	\$165.10	\$160.50	\$160.50



Percentile	School-age Before & After School Full-Time	School-age Before & After School Three Quarter-Time	School-age Before & After School Half-Time	School-age Before & After Quarter-Time
90th Percentile	\$200.00	\$156.40	\$150.00	\$150.00
85th Percentile	\$191.00	\$150.00	\$140.70	\$150.00
80th Percentile	\$170.00	\$150.00	\$129.40	\$137.00
<b>75th Percentile</b>	<b>\$167.00</b>	<b>\$146.25</b>	<b>\$125.00</b>	<b>\$122.50</b>
70th Percentile	\$162.00	\$136.50	\$121.00	\$117.60
65th Percentile	\$156.00	\$131.00	\$120.00	\$114.50
60th Percentile	\$156.00	\$131.00	\$115.00	\$110.00
5th Percentile	\$84.00	\$80.00	\$53.00	\$41.50
55th Percentile	\$156.00	\$130.00	\$111.50	\$106.50
50th Percentile	\$156.00	\$128.50	\$110.00	\$100.00
45th Percentile	\$152.40	\$125.00	\$105.00	\$89.40
40th Percentile	\$150.00	\$123.00	\$102.00	\$86.80
35th Percentile	\$147.00	\$118.95	\$88.40	\$85.10
30th Percentile	\$138.00	\$116.00	\$86.00	\$77.93
25th Percentile	\$125.00	\$113.75	\$86.00	\$62.81
20th Percentile	\$117.00	\$110.00	\$86.00	\$52.00
15th Percentile	\$113.67	\$102.00	\$79.00	\$47.80
10th Percentile	\$110.00	\$93.50	\$69.00	\$45.60

Percentile	School-age Summer Full-Time	School-age Summer Three Quarter-Time	School-age Summer Half-Time	School-age Summer Quarter- Time
Sample Size	80	41	39	27
100th Percentile	\$350.00	\$310.00	\$255.00	\$246.00
95th Percentile	\$270.00	\$210.00	\$200.00	\$200.00
90th Percentile	\$250.00	\$205.00	\$200.00	\$200.00
85th Percentile	\$250.00	\$200.00	\$200.00	\$200.00
80th Percentile	\$250.00	\$200.00	\$187.60	\$199.80
<b>75th Percentile</b>	<b>\$238.25</b>	<b>\$200.00</b>	<b>\$175.00</b>	<b>\$174.50</b>
70th Percentile	\$220.00	\$199.00	\$166.00	\$150.00
65th Percentile	\$210.00	\$191.00	\$150.00	\$148.10
60th Percentile	\$200.00	\$190.00	\$150.00	\$128.60
55th Percentile	\$200.00	\$165.00	\$149.00	\$125.00
50th Percentile	\$200.00	\$150.00	\$146.00	\$103.00
45th Percentile	\$196.65	\$150.00	\$125.00	\$100.70
40th Percentile	\$188.00	\$150.00	\$125.00	\$97.00
35th Percentile	\$170.00	\$150.00	\$120.60	\$64.40
30th Percentile	\$165.00	\$146.00	\$120.00	\$60.00

Percentile	School-age Summer Full-Time	School-age Summer Three Quarter-Time	School-age Summer Half-Time	School-age Summer Quarter-Time
25th Percentile	\$159.00	\$139.00	\$114.50	\$58.00
20th Percentile	\$155.00	\$126.00	\$100.60	\$51.20
15th Percentile	\$155.00	\$125.00	\$93.10	\$49.69
10th Percentile	\$150.00	\$125.00	\$83.20	\$46.13
5th Percentile	\$139.25	\$110.00	\$77.00	\$45.00

## Family Child Care

### Infant Rates

Percentile	Infant Full-Time	Infant Three Quarter-Time	Infant Half-Time	Infant Quarter-Time
Sample Size	108	96	83	75
100th Percentile	\$305.00	\$305.00	\$305.00	\$225.00
95th Percentile	\$284.30	\$253.50	\$225.00	\$156.00
90th Percentile	\$275.00	\$250.00	\$200.00	\$145.00
85th Percentile	\$260.00	\$240.00	\$200.00	\$128.60
80th Percentile	\$250.00	\$230.00	\$200.00	\$117.60
75th Percentile	\$250.00	\$225.00	\$199.00	\$100.00
70th Percentile	\$250.00	\$225.00	\$182.00	\$100.00
65th Percentile	\$250.00	\$223.00	\$176.20	\$100.00
60th Percentile	\$240.00	\$210.00	\$160.93	\$100.00
55th Percentile	\$233.50	\$203.00	\$150.00	\$88.50
50th Percentile	\$225.00	\$200.00	\$150.00	\$80.00
45th Percentile	\$224.00	\$200.00	\$150.00	\$78.15
40th Percentile	\$218.00	\$180.00	\$139.00	\$73.20
35th Percentile	\$204.18	\$180.00	\$130.00	\$70.00
30th Percentile	\$200.00	\$175.00	\$120.00	\$60.60
25th Percentile	\$200.00	\$158.81	\$108.50	\$60.00
20th Percentile	\$187.00	\$150.00	\$100.00	\$53.80
15th Percentile	\$180.24	\$141.25	\$100.00	\$50.04
10th Percentile	\$180.00	\$132.50	\$97.60	\$50.00
5th Percentile	\$160.00	\$119.00	\$90.24	\$43.15

### Toddler Rates

Percentile	Toddler Full-Time	Toddler Three Quarter-Time	Toddler Half-Time	Toddler Quarter Time
Sample Size	120	102	86	84

Percentile	Toddler Full-Time	Toddler Three Quarter-Time	Toddler Half-Time	Toddler Quarter Time
100th Percentile	\$300.00	\$275.00	\$278.67	\$260.00
95th Percentile	\$275.00	\$250.00	\$218.75	\$171.25
90th Percentile	\$251.00	\$240.00	\$200.00	\$150.00
85th Percentile	\$250.00	\$230.00	\$200.00	\$125.00
80th Percentile	\$250.00	\$225.00	\$190.00	\$120.00
<b>75th Percentile</b>	<b>\$250.00</b>	<b>\$225.00</b>	<b>\$183.75</b>	<b>\$102.67</b>
70th Percentile	\$250.00	\$224.70	\$175.00	\$100.00
65th Percentile	\$240.00	\$210.80	\$161.17	\$100.00
60th Percentile	\$225.00	\$200.00	\$150.00	\$100.00
55th Percentile	\$225.00	\$200.00	\$150.00	\$88.25
50th Percentile	\$220.00	\$190.00	\$150.00	\$80.00
45th Percentile	\$206.18	\$182.25	\$150.00	\$78.09
40th Percentile	\$200.00	\$180.00	\$140.00	\$72.40
35th Percentile	\$200.00	\$176.40	\$130.00	\$66.20
30th Percentile	\$185.00	\$171.90	\$120.00	\$60.00
25th Percentile	\$180.00	\$160.00	\$112.50	\$55.80
20th Percentile	\$180.00	\$150.00	\$100.00	\$50.00
15th Percentile	\$170.00	\$141.10	\$100.00	\$50.00
10th Percentile	\$159.00	\$130.50	\$92.99	\$45.37
5th Percentile	\$150.00	\$125.10	\$85.18	\$36.60

#### Preschool Rates

Percentile	Pre-School Full-Time	Pre-School Three Quarter-Time	Pre-School Half-Time	Pre-School Quarter Time
Sample Size	126	104	90	82
100th Percentile	\$300.00	\$300.00	\$285.00	\$185.00
95th Percentile	\$260.00	\$250.00	\$218.25	\$150.00
90th Percentile	\$250.00	\$225.00	\$200.00	\$140.90
85th Percentile	\$250.00	\$225.00	\$200.00	\$118.50
80th Percentile	\$250.00	\$225.00	\$191.00	\$100.00
<b>75th Percentile</b>	<b>\$238.75</b>	<b>\$215.00</b>	<b>\$183.75</b>	<b>\$100.00</b>
70th Percentile	\$225.00	\$200.00	\$175.00	\$100.00
65th Percentile	\$225.00	\$200.00	\$150.00	\$96.50
60th Percentile	\$200.00	\$181.16	\$150.00	\$90.00
55th Percentile	\$200.00	\$180.00	\$144.75	\$80.00
50th Percentile	\$187.50	\$175.00	\$137.50	\$78.00
45th Percentile	\$180.00	\$170.35	\$125.25	\$70.90
40th Percentile	\$180.00	\$160.00	\$120.00	\$61.49
35th Percentile	\$180.00	\$150.00	\$120.00	\$60.00
30th Percentile	\$175.00	\$150.00	\$103.50	\$60.00
25th Percentile	\$171.45	\$143.85	\$100.00	\$50.00

Percentile	Pre-School Full-Time	Pre-School Three Quarter-Time	Pre-School Half-Time	Pre-School Quarter Time
20th Percentile	\$169.75	\$140.00	\$94.71	\$50.00
15th Percentile	\$160.00	\$129.22	\$85.26	\$45.30
10th Percentile	\$150.00	\$125.00	\$82.48	\$41.06
5th Percentile	\$146.25	\$116.00	\$72.25	\$36.00

#### School-age Rates

Percentile	School-age All Day Full-Time	School-age All Day Three Quarter-Time	School-age All Day Half-Time	School-age All Day Quarter-Time
Sample Size	60	50	47	44
100th Percentile	\$520.00	\$280.00	\$280.00	\$280.00
95th Percentile	\$267.00	\$252.00	\$250.00	\$226.00
90th Percentile	\$250.00	\$241.00	\$208.80	\$160.80
85th Percentile	\$250.00	\$219.00	\$185.00	\$150.00
80th Percentile	\$229.00	\$200.00	\$178.20	\$142.00
<b>75th Percentile</b>	<b>\$225.00</b>	<b>\$200.00</b>	<b>\$167.50</b>	<b>\$125.00</b>
70th Percentile	\$200.00	\$186.75	\$160.00	\$114.00
65th Percentile	\$200.00	\$180.00	\$150.00	\$100.00
60th Percentile	\$199.00	\$180.00	\$150.00	\$100.00
55th Percentile	\$190.00	\$179.00	\$150.00	\$100.00
50th Percentile	\$180.00	\$175.00	\$147.50	\$90.00
45th Percentile	\$180.00	\$175.00	\$130.00	\$80.00
40th Percentile	\$180.00	\$162.00	\$110.00	\$76.00
35th Percentile	\$175.00	\$156.00	\$100.00	\$67.20
30th Percentile	\$170.00	\$150.00	\$100.00	\$54.00
25th Percentile	\$162.98	\$145.00	\$98.75	\$50.00
20th Percentile	\$154.52	\$132.00	\$91.00	\$45.00
15th Percentile	\$150.00	\$123.03	\$83.65	\$41.40
10th Percentile	\$134.50	\$119.57	\$78.92	\$40.00
5th Percentile	\$46.50	\$110.80	\$75.55	\$32.40

Percentile	School-age Before School Full-Time	School-age Before School Three Quarter-Time	School-age Before School Half-Time	School-age Before School Quarter-Time
Sample Size	43	41	42	42
100th Percentile	\$300.00	\$280.00	\$195.00	\$175.00
95th Percentile	\$279.50	\$225.00	\$173.85	\$148.75
90th Percentile	\$254.00	\$210.00	\$150.00	\$120.00
85th Percentile	\$242.50	\$200.00	\$147.38	\$110.00
80th Percentile	\$192.00	\$180.00	\$129.00	\$100.00
<b>75th Percentile</b>	<b>\$175.00</b>	<b>\$150.00</b>	<b>\$125.00</b>	<b>\$100.00</b>

Percentile	School-age Before School Full-Time	School-age Before School Three Quarter-Time	School-age Before School Half-Time	School-age Before School Quarter-Time
70th Percentile	\$175.00	\$150.00	\$123.50	\$100.00
65th Percentile	\$169.83	\$150.00	\$120.00	\$100.00
60th Percentile	\$160.46	\$140.00	\$112.00	\$86.00
55th Percentile	\$150.00	\$130.00	\$97.75	\$73.31
50th Percentile	\$150.00	\$121.47	\$90.00	\$67.50
45th Percentile	\$143.50	\$120.00	\$84.93	\$54.50
40th Percentile	\$125.00	\$116.00	\$80.46	\$50.00
35th Percentile	\$123.50	\$110.00	\$80.00	\$50.00
30th Percentile	\$120.00	\$100.00	\$80.00	\$48.95
25th Percentile	\$110.00	\$100.00	\$76.00	\$43.08
20th Percentile	\$100.00	\$96.67	\$75.00	\$40.00
15th Percentile	\$93.00	\$80.00	\$75.00	\$39.47
10th Percentile	\$86.20	\$75.00	\$70.50	\$36.00
5th Percentile	\$75.00	\$75.00	\$65.25	\$30.30

Percentile	School-age After School Full Time	School-age After School Three Quarter-Time	School-age After School Half-Time	School-age After School Quarter-Time
Sample Size	45	43	46	46
100th Percentile	\$300.00	\$250.00	\$195.00	\$175.00
95th Percentile	\$278.00	\$222.50	\$186.25	\$147.50
90th Percentile	\$253.00	\$191.00	\$150.00	\$122.50
85th Percentile	\$235.00	\$156.30	\$135.63	\$112.50
80th Percentile	\$176.00	\$150.00	\$125.00	\$100.00
75th Percentile	<b>\$170.00</b>	<b>\$147.50</b>	<b>\$120.00</b>	<b>\$100.00</b>
70th Percentile	\$161.84	\$140.00	\$117.50	\$100.00
65th Percentile	\$150.00	\$130.00	\$115.00	\$100.00
60th Percentile	\$150.00	\$125.46	\$100.00	\$100.00
55th Percentile	\$150.00	\$125.00	\$100.00	\$74.06
50th Percentile	\$150.00	\$125.00	\$95.00	\$67.50
45th Percentile	\$145.00	\$120.00	\$85.00	\$60.00
40th Percentile	\$128.00	\$119.20	\$81.15	\$50.00
35th Percentile	\$122.00	\$114.50	\$80.00	\$50.00
30th Percentile	\$120.00	\$106.00	\$78.50	\$49.25
25th Percentile	\$100.00	\$100.00	\$76.00	\$43.50
20th Percentile	\$100.00	\$92.67	\$75.00	\$40.00
15th Percentile	\$89.20	\$82.40	\$73.75	\$39.85

Percentile	School-age After School Full Time	School-age After School Three Quarter-Time	School-age After School Half-Time	School-age After School Quarter-Time
10th Percentile	\$77.00	\$76.00	\$70.00	\$36.00
5th Percentile	\$39.00	\$75.00	\$61.25	\$30.00

Percentile	School-age Before & After School Full-Time	School-age Before & After School Three Quarter-Time	School-age Before & After School Half-Time	School-age Before & After School Quarter-Time
Sample Size	60	57	49	44
100th Percentile	\$300.00	\$240.00	\$250.00	\$240.00
95th Percentile	\$256.25	\$200.00	\$196.00	\$158.50
90th Percentile	\$241.00	\$191.50	\$180.20	\$147.00
85th Percentile	\$200.00	\$178.00	\$160.00	\$140.00
80th Percentile	\$200.00	\$175.00	\$150.00	\$125.00
75th Percentile	\$200.00	\$175.00	\$150.00	\$113.75
70th Percentile	\$180.00	\$162.60	\$150.00	\$100.50
65th Percentile	\$175.00	\$160.00	\$150.00	\$100.00
60th Percentile	\$172.00	\$159.60	\$142.00	\$100.00
55th Percentile	\$165.90	\$150.00	\$132.00	\$100.00
50th Percentile	\$161.15	\$145.00	\$130.00	\$87.50
45th Percentile	\$160.00	\$141.00	\$112.00	\$80.00
40th Percentile	\$150.00	\$140.00	\$100.00	\$71.05
35th Percentile	\$150.00	\$128.92	\$95.00	\$60.00
30th Percentile	\$150.00	\$121.67	\$90.00	\$50.00
25th Percentile	\$148.75	\$120.00	\$81.15	\$49.63
20th Percentile	\$129.00	\$112.00	\$80.00	\$44.20
15th Percentile	\$124.25	\$104.00	\$77.35	\$41.10
10th Percentile	\$118.00	\$100.00	\$75.80	\$36.00
5th Percentile	\$29.50	\$69.80	\$75.00	\$30.75

Percentile	School-age Summer Full-Time	School-age Summer Three Quarter-Time	School-age Summer Half-Time	School-age Summer Quarter-Time
Sample Size	60	50	47	44
100th Percentile	\$300.00	\$280.00	\$280.00	\$280.00
95th Percentile	\$270.50	\$260.00	\$233.50	\$171.25
90th Percentile	\$250.50	\$227.50	\$185.00	\$150.00
85th Percentile	\$250.00	\$225.00	\$175.40	\$145.50
80th Percentile	\$205.00	\$200.00	\$161.60	\$140.00
75th Percentile	\$200.00	\$191.56	\$151.00	\$126.25
70th Percentile	\$200.00	\$180.00	\$150.00	\$125.00
65th Percentile	\$200.00	\$180.00	\$150.00	\$100.00
60th Percentile	\$200.00	\$175.00	\$150.00	\$100.00

Percentile	School-age Summer Full-Time	School-age Summer Three Quarter-Time	School-age Summer Half-Time	School-age Summer Quarter-Time
55th Percentile	\$187.25	\$175.00	\$150.00	\$100.00
50th Percentile	\$180.00	\$175.00	\$142.50	\$85.00
45th Percentile	\$180.00	\$160.55	\$130.00	\$80.00
40th Percentile	\$175.00	\$156.00	\$127.00	\$70.25
35th Percentile	\$169.91	\$150.00	\$111.00	\$50.50
30th Percentile	\$164.19	\$148.50	\$99.00	\$49.85
25th Percentile	\$160.00	\$141.25	\$92.50	\$45.00
20th Percentile	\$150.00	\$126.19	\$85.30	\$42.78
15th Percentile	\$150.00	\$119.31	\$80.00	\$39.66
10th Percentile	\$144.50	\$110.90	\$77.66	\$36.00
5th Percentile	\$129.50	\$110.00	\$75.00	\$30.75

## Additional Analysis

### CCAP

TABLE 59 DO YOU ACCEPT DHS SUBSIDY (CHILD CARE ASSISTANCE PROGRAM- CCAP)?

Additional Metrics (N=433)	Yes	No
<b>Total</b>	<b>383</b>	<b>50</b>
<b>Program Type</b>		
Center providers	224	40
FCC providers	159	10
<b>County</b>		
Bristol	15	4
Kent	31	1
Newport	8	4
Providence	316	34
Washington	13	7
<b>Urban or Outside</b>		
Outside Urban Core	201	38
Urban Core	182	12
<b>Language</b>		
English	272	49
Spanish	111	1
<b>Underrepresented Communities</b>		
No	354	46
Yes	29	4
<b>HeadStart</b>		
Yes	15	1
<b>BrightStars</b>		

Additional Metrics (N=433)	Yes	No
No	45	40
Yes	338	10
<b>BrightStars Rating</b>		
1	136	3
2	119	8
3	28	
4	44	8
5	11	5
<b>State Pre-K</b>		
No	359	50
Yes	24	

TABLE 60 IN THE LAST YEAR, HAS THE NUMBER OF DHS/CCAP SUBSIDIZED CHILDREN YOU SERVE CHANGED?

Additional Metrics (N= 383)	Decreased	Increased	Stayed the Same
<b>Total</b>	<b>234</b>	<b>39</b>	<b>110</b>
<b>Program Type</b>			
Center providers	143	22	59
FCC providers	91	17	51
<b>County</b>			
Bristol	8	0	7
Kent	12	8	11
Newport	3	1	4
Providence	202	30	84
Washington	9	0	4
<b>Urban or Outside</b>			
Outside Urban Core	117	18	66
Urban Core	117	21	44
<b>Language</b>			
English	163	28	81
Spanish	71	11	29
<b>CCAP</b>			
No	3	0	7
Yes	231	39	103
<b>Underrepresented Communities</b>			
No	214	36	104
Yes	20	3	6
<b>HeadStart</b>			
Yes	13	1	1
<b>BrightStars</b>			



Additional Metrics (N= 383)	Decreased	Increased	Stayed the Same
No	19	6	20
Yes	215	33	90
<b>BrightStars Rating</b>			
1	79	14	43
2	82	10	27
3	18	2	8
4	26	6	12
5	10	1	0
<b>State Pre-K</b>			
No	216	37	106
Yes	18	2	4

## Program Quality

TABLE 61 RESPONDENT BRIGHTSTARS PARTICIPATION

Additional Metrics	Yes		No	
<b>Total</b>	<b>379</b>	<b>88%</b>	<b>53</b>	<b>12%</b>
<b>County</b>	Count	% (n=379)	Count	% (n=53)
Bristol	15	4%	4	8%
Kent	31	8%	1	2%
Newport	8	2%	3	6%
Providence	311	82%	39	74%
Washington	14	4%	6	11%
<b>Urban or Outside</b>				
Outside Urban Core	198	52%	40	75%
Urban Core	181	48%	13	25%
<b>Language</b>				
English	269	71%	51	96%
Spanish	110	29%	2	4%
<b>CCAP Participation</b>				
No	11	3%	40	75%
Yes	368	97%	13	25%
<b>Underrepresented Community</b>				
No	350	92%	49	92%
Yes	29	8%	4	8%
<b>HeadStart</b>				
HeadStart Program	16	4%	0	0%
<b>State Pre K</b>				
Not State Pre-K	355	94%	53	100%
State Pre-K	24	6%	0	0%

## Cost of Care

Analysis Metrics		Total Population	Subgroup Total as a Percent of Total Population	Actual-Sample	Subgroup Total as a Percent of Percent of Actual Sample	Difference between Total Population Representation & Sample Population
Total	Total	809	100.0%	163	100%	0.0%
Provider Type	FCC providers	406	50.2%	59	36%	-14.0%
	Center providers	403	49.8%	104	64%	14.0%
Location	Outside Urban Core	416	51.4%	94	58%	6.2%
	Urban Core	393	48.6%	69	42%	-6.2%
Language	English	540	66.7%	132	81%	14.2%
	Spanish	268	33.1%	31	19%	-14.1%
	Other	1	0.1%	0	0%	-0.1%
County	Bristol	34	4.2%	6	4%	-0.5%
	Kent	60	7.4%	11	7%	-0.7%
	Newport	19	2.3%	5	3%	0.7%
	Providence	657	81.2%	132	81%	-0.2%
	Washington	39	4.8%	9	6%	0.7%
CCAP Participation	Private Pay Only	118	14.6%	15	9%	-5.4%
	CCAP Participant	691	85.4%	148	91%	5.4%
Underrepresented Community	Underrepresented Community	40	4.9%	15	9%	4.3%
Head Start Participation	Yes	39	4.8%	4	2%	-2.4%
	No	770	95.2%	159	98%	2.4%
State PreK	Yes	39	4.8%	9	6%	0.7%
	No	770	95.2%	154	94%	-0.7%
BrightStars Participation	Yes	640	79.1%	133	82%	2.5%
	No	169	20.9%	30	18%	-2.5%
BrightStars Quality Level	1	289	35.7%	50	31%	-5.0%
	2	212	26.2%	48	29%	3.2%
	3	48	5.9%	11	7%	0.8%
	4	73	9.0%	20	12%	3.2%
	5	18	2.2%	4	2%	0.2%

Analysis Metrics		Statistical Significance Threshold (95% confidence interval, 5% MOE)	Statistical Significance met	Margin of Error of Actual Sample, with 95% confidence interval
Total	Total	261	No	6.86%
Provider Type	FCC providers	198	No	11.80%
	Center providers	197	No	8.20%
Location	Outside Urban Core	200	No	8.90%
	Urban Core	195	No	10.70%
Language	English	225	No	7.40%
	Spanish	159	No	16.58%
	Other	1	No	0
County	Bristol	32	No	36.85%
	Kent	53	No	26.90%
	Newport	19	No	38.60%
	Providence	243	No	7.63%
	Washington	36	No	47%
CCAP Participation	Private Pay Only	91	No	23.74%
	CCAP Participant	193	No	7.15%
Underrepresented Community	Underrepresented Community	37	No	20.26%
Head Start Participation	Yes	36	No	47%
	No	257	No	6.93%
State PreK	Yes	36	No	29.02%
	No	257	No	7.07%
BrightStars Participation	Yes	241	No	7.57%
	No	118	No	16.27%
BrightStars Quality Level	1	166	No	12.63%
	2	137	No	12.47%
	3	43	No	26.20%
	4	62	No	18.80%
	5	18	No	44.00%



[www.publicconsultinggroup.com](http://www.publicconsultinggroup.com)